

Dental Equipment Sales & Service

ALLSTAR

New Local
Service Rates!



DENTAL EQUIPMENT SPECIALS EDITION



view our full-line of equipment, parts, and supplies

www.shopallstardental.com

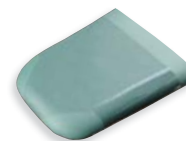
EQUIPMENT

- Packages & Chairs 4
- Delivery Systems 5-6
- Lights 7
- Stools 7
- Sterilizers 8
- Vacuum & Compressors 9
- X-Ray & Digital Imaging 10
- Small Equipment 11



PARTS

- Foot Controls 12
- Handpiece & Optics 13-14
- Light Parts & Bulbs 15-17
- Sterilizer Parts 18
- Syringes 19-21
- Tubing & Vacuum 22-24
- Water Bottles 5-6



SUPPLIES

- Anesthetics 25
- Composites/Cosmetic 26-27
- Disposables 28-29
- Evacuation 30
- Impression 31
- Infection Control 32-34
- Preventative 35
- X-Ray 35



Metrex CaviWipes
Only \$8.35/ Tub



Metrex CaviCide
Only \$21.97 / Gal



PDI Super-Sani Wipes
Only \$9.75 / Tub



Mydent Mixing Tips
Only \$23.72, 48/Bag



Crosstex Ultra-Sensitive
Hypoallergenic Masks
Only \$12.99, 50/Box



C-Fold Towels
Only \$30.00, 500/Case



Zirc E-Z Access Shelf
Only \$119.00



Microbrushes
Only \$29.40, 4/Pack

ALLSTAR DENTAL INC.
163 Wheeling Rd.
Wheeling, IL 60090

PHONE: 847-229-9700 FAX: 847-229-9773

WIN2014

VISIT US AT THE 2014 CHICAGO MIDWINTER MEETING AT BOOTH NUMBER 4640



Allstar Dental Inc has been one of the most popular dental equipment sales & service companies for over 20 years. Our full-service equipment sales and repair specialists can help you find the right equipment that will make your office more efficient and give you a headache free experience. Our full-line of dental equipment is from the most trusted manufacturers in the dental industry and we have always provided this equipment with a great value and customer service. In addition to equipment and service, Allstar has complimented our product line with dental supplies and parts at great prices. Our “do it yourself doctors” benefit from our over the phone technical support to find parts and the doctor’s office has enjoyed our dental supply easy ordering over the phone or @ shopallstardental.com

Value Customer,

Thank you for your interest in Allstar Dental Inc. Our service rates are fair, competitive, and complimented by the large inventory of parts available in our service vehicles. We consistently try to resolve your emergency on the first visit, reducing your down time.

I am often told by doctors how great our service team is and how friendly our office staff has been over the last 20 years. The Allstar philosophy has always been: being a service company first, providing you with the care and follow up that is necessary for your peace of mind, and overall excellence in the dental industry.

Eric Strohmeier
President

Equipment Installation and Shipping

Pricing in this book does not include shipping or installation

Returns - Items that are opened, damaged by someone other than shipper, or compromised can not be returned. Custom Items Cannot be returned. Most Equipment Items are subject to a 20% restocking fee.

Shipping - Equipment could take up to 6 weeks for delivery

Installation - Installation is not included in price. However, our lowest rate is applied for the installation and for future repairs.

Terms of Sale

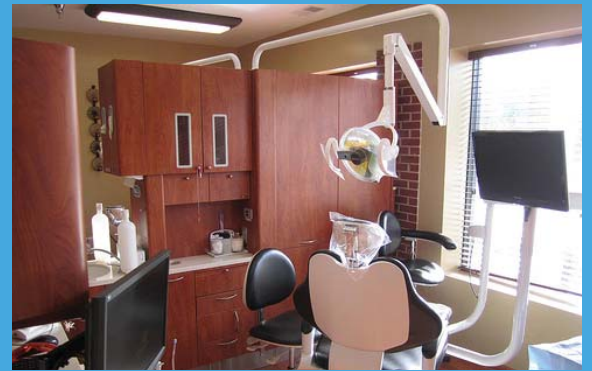
Allstar's policies are put into place to protect our customers and to provide the best pricing and service we can.

Prices are subject to change without notice.

Returns - Items that are opened, damaged by someone other than shipper, or compromised can not be returned.

Shipping - All orders that are received before 3:00 pm (CST) will ship out same day.

ALLSTAR QUALITY



Find these great brands and more @ www.shopallstardental.com





**Lights From:
\$893.00**

**Packages
From:
\$7,993.00**

**Chairs From:
\$4,193.00**

**Units From:
\$1,493.00**



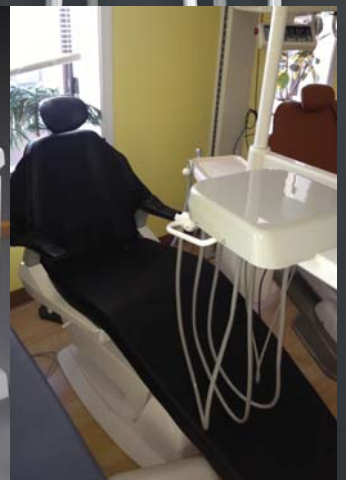
**Quolis Package
Quolis Chair Only
Call For Lowest Price**



**Excalibur Package
Bel-20N Chair Only
Call For Lowest Price**



**Eco Package
Bel-50 Chair Only
Call For Lowest Price**



**Show Room Eco Package
Showroom Bel-50: \$4,400
Package: \$8,893.00**

Over the Patient



2HP Auto 2" dia. Post Mount Dr's System
(1 wet/1 dry) w/ Manual Flex Arm

Beaverstate S-2500

Only: \$1,493.00



HP Auto 2" dia. Top Post Mount Dr's System
w/ Pneumatic Brake Flex Arm

Beaverstate Top Mount S-3606

Beaverstate Side Mount S-3600

Only: \$1,993.00



3HP Auto 2" dia. Top Post Mount Dr's
System w/ Pneumatic Brake Flex Arm

Beaverstate Top Mount S-3360

Beaverstate Side Mount S-3300

Only: \$1,493.00



3HP Auto 2" dia. Post Mount Dr's System
(2 wet/1 dry) w/ Manual Flex Arm

Beaverstate S-3420

Only: \$1,693.00



3HP Auto Euro 2" dia Top Post Mount Dr's
System w/ Pneumatic Brake Flex Arm

Beaverstate Top Mount S-6307

Beaverstate Side Mount S-6300

Only: \$2,293.00



Quolis™ Series delivery systems are beautiful, rugged and jam-packed with features to optimize your operatory efficiency. They are available in a variety of flexible configurations to enhance the utilization of your Quolis™ 5000 chair.

Belmont Quolis Dental Unit

Call For Lowest Price

Cabinet Mount



3 HP Automatic Rear Delivery Slide-out
Mount Control Head

Beaverstate S0-3304

Only: \$1,493.00



3HP Auto Rear Delivery Slide-out Mount
Control Head w/ Vacuum

Beaverstate SD-3354

Only: \$1,493.00



3HP Auto Doctor's Side Delivery w/
Pneumatic Brake Flex Arm

Beaverstate SD-3302

Only: \$2,093.00

Heavy-Duty Bottles for Dental Unit Water Systems



Standard Bottles

- Heavy wall construction, safely operated at normal water system pressure
- High Density Polyethylene

PN	DESCRIPTION	PRICE
8128	750 ml Plastic Bottle w/ Cap & Pick-Up Tube	\$6.45
8669	1-Liter Plastic Bottle w/ Cap & Pick-Up Tube	\$6.75
8164	2-Liter Plastic Bottle w/ Cap & Pick-Up Tube	\$11.25

Asepsis Self-Contained Water Systems

- Deluxe models have a selector toggle allowing you to switch between city & bottled water
- Models for 750-ml & 2-liter bottles
- Standard 28 mm thread for water bottle
- Pressure gauge 7265
- Mounts to vertical surfaces
- Optional post-mount available
- On/off toggle releases
- Air purge toggle bottle pressure
- Metal cover w/ white



PN	DESCRIPTION	PRICE
8177	Dual 750-ml Asepsis Standard System	\$245.00
8178	Dual 750-ml Asepsis Deluxe System	\$280.00
8179	Dual 2-liter Asepsis Standard System	\$250.00
8180	Dual 2-liter Asepsis Deluxe System	\$285.00
8181	Single 750-ml Asepsis Standard System (includes extra bottle)	\$180.00
8182	Single 750-ml Asepsis Deluxe System (includes extra bottle)	\$215.00
8183	Single 2-liter Asepsis Standard System	\$185.00
8184	Single 2-liter Asepsis Deluxe System	\$220.00
8137	Adapter to Mount Water System to 2" Post, Anodized Aluminum	\$55.00
8162	Adapter to Mount Water System to 2" Post, White Powder Coat	\$60.00
8255	Adapter to Mount Water System to 2 3/8" Post, White Powder Coat	\$57.00

Dental Carts



3 Handpiece Automatic Doctor's Cart
Beaverstate A-4100
Only: \$1,393.00



3 Handpiece Automatic Doctor's Dental Cart with Vacuum
Beaverstate A-4150
Only: \$1,993.00



3 Handpiece Automatic Doctor's
Beaverstate S-4100
Only: \$1,393.00



3 Handpiece Automatic Doctor's with Vacuum
Beaverstate S-4350
Only: \$1,693.00

Rear Delivery



3HP Auto Rear Delivery Beneath Shelf w/
Dual Water Bottle
Beaverstate RD-3000
Only: \$1,693.00
Assistant & Vacuum



3HP Automatic Rear Delivery Beneath Shelf
Mount Control Head
Beaverstate RD-3001
Only: \$1,593.00



3HP Auto Rear Delivery Wall Mounted Duo
w/ Pneu Brake Flex Arm
Beaverstate RD-4250
Only: \$3,793.00



Horizontal Folding Arm, 24", 2" dia.
Post Mount with Vacuum Package
Beaverstate A-5000
Only: \$493.00



Telescoping Arm System with Vacuum Pack-
age 1 HVE, 1 SE, 1 Syringe
Beaverstate A-5200
Only: \$693.00



1 HP, 2" dia. Post Mount Hygiene System
with Folding Arm and Vacuum Package
Beaverstate A-5524
Only: \$593.00



TPC Portable Dental Unit
Only: \$1,593.00

Dental Lights



Beaverstate Aerolight
Only: \$1,193.00



Beaverstate CLX-110
Only: \$893.00



DCI Post Mount Light
Only: \$1,293.00



DCI Ceiling Light
Only: \$1,493.00



DCI Track Light
Only: \$1,993.00



Belmont Eco Light
Post Mount Light: Call for Price
Ceiling Light: Call for Price
Track Light: Call for Price



Belmont Clesta Light
Post Mount Light: Call for Price
Ceiling Light: Call for Price
Track Light: Call for Price



Belmont LED Halo Light
Post Mount Light: Call for Price
Ceiling Light: Call for Price

Dental Stools



Crown Crestone C20A
Assistant Stool
Only: \$293.00



Crown Telluride C50ABT
Assistant Stool
Only: \$793.00



Crown Steamboat C60ABT
Assistant Stool
Only: \$893.00



Crown Sterling C85SA
Assistant Stool
Only: \$693.00



Crown Crestone C20D
Doctors Stool
Only: \$193.00



Crown Vail C30HS
Doctors Stool
Only: \$393.00



Crown Durango C90SB
Doctors Stool
Only: \$493.00



Crown virtù® C120DM
Doctors Stool
Only: \$693.00



The Midmark M11 & M9 autoclave features an intuitive display and simple prompts that help you easily select the cycle you need – whether it is for unwrapped items, pouches, packs or handpieces. Once the sterilization process is complete, the door conveniently opens automatically and quietly to dissipate the steam and provide fast and efficient drying of your instruments.



Midmark M11 & M9 Sterilizers
CALL ABOUT AVAILABLE
REBATES,
TRADE IN SPECIALS,
& SPECIAL PRICING



Tuttnauer Valueklave Sterilizers
 1730: \$1,693.00 (7 inch)



Tuttnauer Manual Sterilizers
 2540: \$3,693.00 (10 inch)
 2340: \$3,193.00 (9 inch)



Tuttnauer Automatic Sterilizers
 EZ10: \$4,793.00 (10 inch)
 EZ9: \$4,193.00 (9 inch)



Midmark M3 Sterilizer
 Call For Lowest Price



SciCan G4 Sterilizers
 Call For Lowest Price



SciCan Statim Sterilizers
 Call For Lowest Price



Find sterilizer gaskets on page 21



Midmark PowerAir
Call For Lowest Price



Midmark PowerVac
Call For Lowest Price



Midmark Power Air
Call For Lowest Price



Medentex Dry Vac
Call For Lowest Price



Tech-West ECOVAC
Dry Vacuum Pump
From: \$4733.00



Medentex Amalgam
Separators
Call For Lowest Price



Air / Water Separator
Call For Lowest Price

CALL FOR
ASSISTANCE ON
SIZING, VOLTAGE,
SHIPPING,
INSTALLATION, AND MORE
847-229-9700

Tech-West Whirlwind Vacuum Pump



R = Recycler

Tech West's water recycler is a simple yet effective way to **save** as much as **70%** of **water consumption**. It is factory installed on the pump or can be field installed with ease.

Tech West's most popular pump, the Whirlwind Liquid Ring Vacuum Pump provides a dependable and cost-effective solution for any dental office. Designed to last, the Whirlwind features a capacitor start and capacitor run motor that lowers energy consumption and add years of life to the motor.

Item #	Max Users & HP	Voltage	Warranty	Allstar Price
VPL2SS	2-User, 1 HP	115/220	5-Years	\$1,530.00
VPL2SSR	2-User, 1 HP	115/220	5-Years	\$1,657.00
VPL3SS	3-User, 1x1.5 HP	115/220	5-Years	\$1,721.00
VPL3SSR	3-User, 1x1.5 HP	115/220	5-Years	\$1,849.00
VPL4S2	4-User, 2 HP	220	5-Years	\$1,913.00
VPL4S2R	4-User, 2 HP	220	5-Years	\$2,041.00
VPL4D2	4-User, 2x1HP	220	5-Years	\$3,190.00
VPL4D2R	4-User, 2x1HP	220	5-Years	\$3,446.00
VPL6D2	6-User, 2x1.5 HP	220	5-Years	\$3,765.00
VPL6D2R	6-User, 2x1.5 HP	220	5-Years	\$4,021.00
VPL8D2	8-User, 2x2 HP	220	5-Years	\$4,021.00
VPL8D2R	8-User, 2x2HP	220	5-Years	\$4,276.00

Tech-West UltraClean Oil-Less Compressor

Q = Quiet Cover



Tech West's Ultra Clean Oil-less Compressor supplies 100% oil-free air to the dental office environment. Tech West guarantees the clean, dry air you expect from a high performance drying system.

Tech West's Rocky Oil-less Compressor Series supplies 100% oil-free air to the dental office environment. Tech West guarantees the clean, dry air you expect from a high performance drying system.

Item #	Max Users	Voltage	Warranty	Allstar Price
ACO2S1	2-User, 1 HP	115	3-Years	\$3,540.00
ACO2S2	2-User, 1 HP	220	3-Years	\$3,540.00
ACO4D2	4-User, 2x1 HP	220	3-Years	\$5,453.00
ACO6T2	6 User, 3x1 HP	220	3-Years	\$7,249.00
ACOR2D1	2-3 User, 1 HP	220	3-Years	\$3,741.00
ACOR2D1Q	2-3 User, 2x.75 HP	220	3-Years	\$4,193.00
ACOR2D2	2-3 User, 2x.75 HP	220	3-Years	\$3,741.00
ACO2D2Q	2-3 User, 1 HP	220	3-Years	\$4,193.00
ACOR3T2	3-5 User, 3x.75 HP	220	3-Years	\$5,551.00
ACOR3T2Q	3-5 User, 3x.75 HP	220	3-Years	\$6,132.00
ACOR4Q2	4-6 User, 4x.75 HP	220	3-Years	\$7,100.00



Belmont 097
Call For Lowest Price



Belmont Photo-X II
Call For Lowest Price



Belmont Bel-Max
Call For Lowest Price



Belmont Bel-Cypher
Call For Lowest Price



Morita IC5
Call For Lowest Price



Morita 3D R100
Call For Lowest Price



**MyRay Hyperion X9 Pan/Ceph
Conebeam**
Call For Lowest Price



Belmont Bel-Sensor
Call For Lowest Price



Sota Clio Sensors
Call For Lowest Price



MyRay Xpod
FROM \$5,999.00



Sota Imaging Claris i4D Camera
Only: \$2,575.00



Vector Lil Beaver Scaler
Only \$393.00



**Handler 550 Porta-Vac Bench Top
Dust Collector**
Only \$325.00



Tuttnauer Clean & Simple, 1 Gallon
Only \$460.00



EMS Air-Flow S1/ Air Polisher
Only \$2,493.00



Handler Lathe
As Low As \$299.00



**L&R Quantrex® 310 Ultrasonic
Cleaning Systems 3.5 Gallon**
Only \$993.00



Vector Piezo Scaler
Call For Lowest Price



Handler Vibrators
As Low As \$99.00



Vector Microlite Slowspeed
Only \$393.00



Handler Model Trimmer
Only \$393.00



**Buffalo Vacuum Forming
System, 120volt**
Only \$393.00



Tek-USA Rainbow Highspeeds
Only \$120.00 each



High Quality OPTIC Highspeeds
Starting @ \$620.00 each



Sota Imaging e-Bite & e-Bite Plus
Call For Lowest Price

**CAN'T FIND A PART?
GIVE US A CALL!**

Our technicians have been helping offices find parts for over 20 years.

Belmont Bel-50 Foot Control



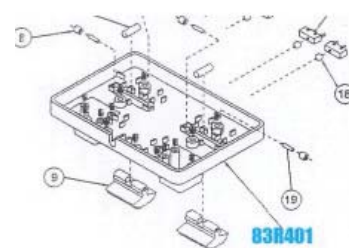
PN	PRICE
BLT B10503780G	425.00

Marus Max Star DC 1490 Foot Control



PN	PRICE
MAR 83R551-1	435.00

Old Style Marus Cover for Foot Pedal



PN	PRICE
MAR 83R401	56.00

A-dec® Replacement Foot Control (Dark Surf)



- Additional configurations available upon request, contact Customer Service

PN	DESCRIPTION	PRICE
6306	A-dec® Replacement Wet / Dry & Scaler Button Foot Control (A-dec® #38.1805.00)	\$190.00

Wet/Dry & Chip Blower Disc-Type



- Responsive, high volume, variable flow
- Valve can be actuated by pressing any point
- Toggle for water coolant on/off
- Toe-touch button valve for chip blower
- 7' polyurethane 4-hole tubing (5-hole tubing with relay)

DARK SURF	GRAY	LT SAND	STERLING	DESCRIPTION	PRICE
6338	6315	6317	6324	Foot Control w/o Signal Relay	\$165.00
6438	6415	6416	6424	Foot Control w/ Signal Relay	\$190.00

Wet/Dry Disc-Type



- Responsive, high volume, variable flow
- Valve can be actuated by pressing any point
- Toggle for water coolant on/off
- 7' polyurethane 3-hole tubing (4-hole tubing with relay)

DARK SURF	GRAY	LT SAND	STERLING	DESCRIPTION	PRICE
6335	6310	6311	6322	Foot Control w/o Signal Relay	\$130.00
6435	6410	6411	6423	Foot Control w/ Signal Relay	\$155.00

Scaler Disc-Type



- Responsive, high volume, variable flow
- Valve can be actuated by pressing any point
- Toe-touch button valve for on/off control of ultrasonic scaler (3-way, momentary)
- 7' polyurethane 3-hole tubing (5-hole tubing with relay)

DARK SURF	GRAY	LT SAND	STERLING	DESCRIPTION	PRICE
6337	6320	6321	6332	Foot Control w/o Signal Relay	\$130.00
6437	6420	6422	6432	Foot Control w/ Signal Relay	\$155.00

Chip Blower Disc-Type



- Responsive, high volume, variable flow
- Valve can be actuated by pressing any point
- Toe touch button valve for chip blower, (2-way, momentary)
- 7' polyurethane 3-hole tubing (5-hole tubing with relay)

DARK SURF	GRAY	LT SAND	STERLING	DESCRIPTION	PRICE
6336	6305	6307	6314	Foot Control w/o Signal Relay	\$130.00
6436	6405	6407	6414	Foot Control w/ Signal Relay	\$155.00

Foot Control Toggle Valve Assembly

- For use in the repair of DCI & A-dec® wet/dry foot controls

PN	DESCRIPTION	PRICE
6132	Toggle Valve Assembly	\$20.00

Wet/Dry Foot Control Repair Kit

- For use w/ all DCI wet/dry disc-type foot controls

PN	DESCRIPTION	PRICE
6163	Foot Control Repair Kit	\$11.50

Foot Control Button Valve Assembly

- For use in the repair of DCI & A-dec® chip blower & scaler foot controls

PN	DESCRIPTION	PRICE
6093	2-way Valve Assembly (chip air)	\$23.00
6094	3-way Valve Assembly (scaler)	\$23.00



4-Hole Connector and Nut

PN	DESCRIPTION	PRICE
120T	Nut & Metal Connector	\$12.50
120PT	Nut & Plastic Connector	\$11.50
120N	Nut Only	\$4.50
0120	Metal Connector Only	\$8.00
120P	Plastic Connector Only	\$7.00



Air Electric Switch

- 10 PSI activated
- Normally open

PN	DESCRIPTION	PRICE
7084	Air Electric Switch	\$24.00

Autoclavable Handpiece Gaskets

PN	DESCRIPTION	PRICE
0122	Gasket, 3-Hole Borden	\$3.30
0123	Gasket, 4-Hole Midwest	\$3.30
0124	Gasket, 5-Hole Midwest	\$3.30
4710	Gasket, 6-Pin / 6-Hole	\$3.30



Handpiece Tubing Adapters

PN	DESCRIPTION	PRICE
0954	4-Hole Handpiece Tubing Connector	\$8.00
0956	To Install a 2 or 3-Hole Handpiece on a 4-Hole Connector	\$71.00
0957	To Install a 4-Hole Handpiece on a 2-Hole Connector	\$71.00
0958	To Install a 4-Hole Handpiece on a 3-Hole Connector	\$71.00

Handpiece Burr Wrenches



PN	DESCRIPTION	PRICE
8625	Universal, Square Drive	\$20.00
8626	Universal, Hex Drive	\$20.00
8627	For Midwest Quiet Air	\$12.35
8628	For Midwest 8000 / Tradition	\$17.00

Plastic Reducing Barb Tee

- 1/8" x 1/16" x 1/8"

PN	DESCRIPTION	PRICE
0069	Reducing Tee (pkg 10)	\$10.00

Replacement Seals & O-Rings for Handpieces

Coupler & Head Cap O-Rings

PN	DESCRIPTION	PRICE
4728	O-Ring for Kavo Multiflex (pkg of 5)	\$6.55
4729	O-Ring for Kavo 630/640 Water Spray Cover (pkg of 2)	\$2.50
4730	O-Ring for Kavo 647/649 Water Spray Cover (pkg of 2)	\$2.50
4731	O-Ring for NSK & Kinetic Vipor (pkg of 5)	\$6.55
4732	O-Ring for Star 430 / Solara (pkg of 2)	\$6.55
4733	O-Ring for Bien Air USA 5-Hole (pkg of 4)	\$6.55
4734	O-Ring for Bien Air Euro 6-Pin (pkg of 3)	\$6.55
4735	O-Ring Sirona (pkg of 4)	\$6.55
4736	O-Ring W&H Roto Quick Coupler (pkg of 3)	\$6.55



DCI Handpiece Flush System

- Provides regulated & filtered air for cleaning & aiding in the lubrication of handpieces
- Purges air & water coolant lines
- Compact table top model
- No foot control required
- Adjustable air pressure w/ easy to read gauge
- Bottle collects excess lubricant
- Aids in quick relubricating following autoclaving
- 35-micron filter
- Easy to clean surfaces
- Easy installation
- For high speed handpieces only
- Requires 80 PSI 1/4" tubing hook up
- Requires adapter – select from list below

PN	DESCRIPTION	PRICE
4060	Flush System (less adapter)	\$195.00



Vector High-performance Lubricant

Available individually or in a case of 6

Only: \$37.00
Case: \$199.00



Handpiece Pressure Test Gauge

- Measures drive air pressure with handpiece running
- 0-60 PSI gauge
- Fits both 6 pin and 5 hole handpieces

7267



PN	DESCRIPTION	PRICE
7267	Handpiece Pressure Gauge	\$25.00
7264	Replacement Gauge	\$15.00



ISO-C 6-Pin Economy Handpiece Illumination System

- Lamp is in handpiece or swivel adapter
- Includes: Transformer 8771, 120V to 3.85 VDC 1AMP Air electric switch, 10 PSI activated 7084, installation kit w/ instructions 8817 ISO-C 6-pin handpiece tubing

DARK SURF	GRAY	LT SAND	STERLING	BLACK	LENGTH	PRICE
8762	8791	8793	8706	8792	5'	\$190.00
8763	8794	8796	8708	8795	Coiled	\$210.00

ISO-C 6-Pin Power Optic Handpiece Tubing Only

- Six-pin connector for ISO-C handpiece
- Six-pin, 4-Hole asepsis handpiece tubing w/ connector

DARK SURF	GRAY	LT SAND	STERLING	BLACK	LENGTH	PRICE
8774	8797	8786	8745	8798	5'	\$145.00
8990	8996	8993	8904		7'	\$168.00
8991	8997	8994	8905		10'	\$192.00
8992	8998	8995	8906		12'	\$212.00
8764	8799	8787	8746	8800	Coiled	\$168.00



ISO 5-Hole Economy Handpiece Illumination System

- Lamp in handpiece tubing connector
- Includes: Transformer 8771, 120V to 3.85 VDC 1AMP, Air electric switch, 10 PSI activated, 7084 installation kit w/ instructions 8817 Lamp module, ISO, 3.5VDC, 720 MA 8813, ISO 4-hole asepsis handpiece tubing

DARK SURF	GRAY	LT SAND	STERLING	BLACK	LENGTH	PRICE
8757	8801	8803	8710	8802	5'	\$252.00
8758	8804	8806	8711	8805	Coiled	\$272.00

ISO 5-Hole Power Optic Handpiece Tubing Only

- 4-Hole asepsis handpiece tubing w/ connector
- Requires lamp module 8813 (not included)

DARK SURF	GRAY	LT SAND	STERLING	BLACK	LENGTH	PRICE
8759	8807	8818	8747	8808	5'	\$145.00
8953	8933	8934	8935		7'	\$168.00
8954	8961	8962	8963		10'	\$192.00
8955	8977	8978	8979		12'	\$212.00
8760	8809	8819	8748	8810	Coiled	\$168.00
			8813		Lamp Module	\$65.00

Handpiece Muffler and Oil Collector

- Can be mounted through frame for removal from outside control head
- Will handle up to four handpieces
- Minimum back pressure
- Compact size to fit inside control head
- Filter media is standard cotton swab material



PN	DESCRIPTION	PRICE
7321	Muffler	\$26.00

Standard 4-Hole Handpiece Tubing

GRAY	BLACK	DESCRIPTION	PRICE
402CT	401CT	Coiled w/ Connector	\$23.00
402T	401T	Straight 7 ft. w/ Connector	\$20.00
402C	401C	Coiled	\$12.00
402	401	Straight (per ft.)	\$1.12
402R	401R	100 ft. Roll	\$74.00
402B	401B	100 ft. Box	\$74.00



402

Asepsis 3-Hole Handpiece Tubing

GRAY	LT SAND	BLACK	DESCRIPTION	PRICE
322CT	323CT	321CT	Coiled w/ Connector	\$26.00
322T	323T	321T	Straight 7 ft. w/ Connector	\$22.00
322C	323C	321C	Coiled	\$11.50
322	323	321	Straight (per ft.)	\$0.92
322R	323R	321R	100 ft. Roll	\$81.00
322B	323B	321B	100 ft. Box	\$81.00



323

A-dec® Cascade "6300" Light Reflector



- Fits Cascade "6300" Lights
- Reflector is NEW, not re-coated
- 4 year warranty on "optic" coating

PN	DESCRIPTION	PRICE
8938	Light Reflector	\$390.00

A-dec® Cascade Light Shield Bracket Assembly



PN	DESCRIPTION	PRICE
8619	Shield Bracket Assembly, Surf (pkg of 2) (A-dec® #28.1012.00)	\$13.50

A-dec® Cascade "6300" Bulb Socket



- 12" leads
- Ceramic Socket
- Fits Cascade "6300" light

PN	DESCRIPTION	PRICE
2887	Lamp Socket, (A-dec® #90.0463.01)	\$27.44

A-dec® Cascade "6300" Bulb



- 17 Volt / 95 watt
- Fits Cascade "6300" lights

PN	DESCRIPTION	PRICE
9364	Cascade Bulb, (A-dec® #041.709.00)	\$16.00

A-dec® Cascade "6300" Power Switch



- SPST Switch
- 125 Volt rating, 6" leads

PN	DESCRIPTION	PRICE
8114	Power Switch	\$20.00

A-dec® "Performer" Bulb



- H-3 Bulb Type, 12 Volt AC/55 watt

PN	DESCRIPTION	PRICE
8688	Performer Bulb, (A-dec® #041-513-00)	\$11.00

Belmont Power Switch



- DPDT – 3 position
- 115 Volt AC / 10 amp

PN	DESCRIPTION	PRICE
2886	Belmont Power Switch	\$19.30

Belmont Reflector



- Reflector is NEW, not re-coated
- 4 year warranty on "optic" coating

PN	DESCRIPTION	PRICE
8936	Belmont Reflector	\$280.00

Belmont Lens Shield



PN	DESCRIPTION	PRICE
8603	Belmont Lens Shield	\$7.90

Belmont Bulb



- H-3 Bulb Type
- 12 Volt AC / 55 watt

PN	DESCRIPTION	PRICE
8688	Belmont Bulb	\$11.00

MARUS / RITTER / MDT Marus & Ritter® Reflector



- Reflector is NEW, not re-coated
- 4 year warranty on "optic" coating

PN	DESCRIPTION	PRICE
8609	Reflector, Ritter P/N 152615, Marus P/N 52R412	\$500.00

Marus & Ritter® Lens Shield



PN	DESCRIPTION	PRICE
8602	Marus & Ritter® Lens Shield, 122845	\$13.00

Lamp Module Identification

- 8813: Drive Air & Exhaust Ports are DIFFERENT in outer diameter
- 8773: Drive Air & Exhaust Ports are the SAME in outer diameter



5-Hole Lamp Module (Current DCI Hoses)



- For use w/ ISO fiber optic tubing
- 3.5 VDC, 720 MA
- Red gasket
- Ultra high pressure provides 50% more light & longer bulb life

PN	DESCRIPTION	PRICE
8813	Lamp Module	\$65.00

5-Hole Lamp Module (Old Style Hoses)



- For use w/ previous DCI tubing requiring 3.5 VDC, 720 MA
- Black Gasket
- Ultra high pressure provides 50% more light & longer bulb life

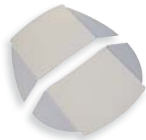
PN	DESCRIPTION	PRICE
8773	Lamp Module	\$68.00



Pelton & Crane® LF II Reflector

- Fits Pelton & Crane® LFII
- Reflectors are new, not re-coated
- 4 year warranty on optics (coating)

PN	DESCRIPTION	PRICE
8932	Pelton & Crane® LF II Reflector, (P&C #3321887)	\$400.00



Pelton & Crane® LF II Lens Shield

PN	DESCRIPTION	PRICE
8601	LF II Shield, (P&C #3321598)	\$12.30



Pelton & Crane® LF II Bulb

- 24 Volt AC / 150 watt

PN	DESCRIPTION	PRICE
8683	Pelton & Crane® LF II Bulb, (P&C #3321879)	\$23.00



Pelton & Crane® LF II Lamp Socket

- Replacement Lamp Socket

PN	DESCRIPTION	PRICE
8636	Pelton & Crane® LF II Lamp Socket, (P&C #3336992)	\$22.00



Pelton & Crane® LF II Switch

- SPST Switch
- 125 Volt AC / 15 amp

PN	DESCRIPTION	PRICE
8114	Pelton & Crane® LF II Switch, (P&C #007096 & 3321853)	\$20.00



Pelton & Crane® LF II Light Post Bushing

- Light Post Bushing
- 1 7/8" O.D. x 1 11/16" I.D. x 3" Long

PN	DESCRIPTION	PRICE
8470	Pelton & Crane® LightPostBushing	\$40.00

Fiber Optic LED Replacement Handpiece Bulbs

- Requires 3.5 Volt DC
- Fits Kavo Turbines & Micro Motors

PN	DESCRIPTION	PRICE
9372	Replacement LED Handpiece Bulbs	\$55.00

- Requires 3.5 Volt DC
- Fits Bien-Air Micro Motors

PN	DESCRIPTION	PRICE
9374	Replacement LED Handpiece Bulbs	\$55.00

- Requires 3.5 Volt DC
- Fits Sirona Turbines & Micro Motors

PN	DESCRIPTION	PRICE
9373	Replacement LED Handpiece Bulbs	\$55.00



Marus & Ritter® Bulb

- 24 Volt AC / 150 watt

PN	DESCRIPTION	PRICE
8687	Marus&Ritter® Bulb, Ritter P/N 121720, Marus P/N 014R207	\$19.00



Marus & Ritter® Power Switch

- SPST Switch
- 125 Volt AC / 10 amp

PN	DESCRIPTION	PRICE
8699	Toggle Switch, Ritter P/N WO-34566	\$11.00



MDT Aseptic 2000 Series Lamp Socket

PN	DESCRIPTION	PRICE
2731	MDT Aseptic 2000 Series Lamp Socket	\$41.30



Pelton & Crane® LF I & LF + Reflector

- Original high quality part! Purchased directly from the same manufacturer as Pelton & Crane®
- Reflector is NEW, not re-coated
- 4 year warranty on "optic" coating

PN	DESCRIPTION	PRICE
8610	LF I & LF + Reflector, (P&C #0022438)	\$400



Pelton & Crane® LF I Lens Shield

PN	DESCRIPTION	PRICE
8600	LF I Shield, (P&C #006777)	\$7.00



Pelton & Crane® LF I & LF + Bulb

- 24 Volt AC / 150 watt

PN	DESCRIPTION	PRICE
8683	LF I & LF + Bulb, (P&C #3321879)	\$23.00



- 3.5 Volt / 750 MA
- Fits Midwest XGT, Stylus & Stylus ATC handpieces (Midest #790257R)

PN	DESCRIPTION	PRICE
9360	R Handpiece Bulbs	\$17.00

- 3.5 Volt / 750 MA
- Fits A-dec® / W&H handpieces 896, 898 & 898-LE
- (A-dec® #0.0220.7610)

PN	DESCRIPTION	PRICE
9361	Handpiece Bulbs	\$17.00



- 3.3 Volt / 4 watt
- Kavo Lux coupler previous PN 553-3881
- Current PN 1002.2928
- Dabi Atlante

PN	DESCRIPTION	PRICE
9362	Handpiece Bulbs	\$17.00

Replacement Bulbs



- 17 Volt / 95 watt
- Fits Cascade "6300"

PN	DESCRIPTION	PRICE
9364	Cascade Bulb, (A-dec® #041.179.00)	\$16.00



- 24 Volt AC / 55 watt
- A-dec® Performer / Ampco Contender, Fiad / Healthco / SDS Fantastic Belmont / Celux / Chayes Virginia, DCI Equipment Pro 70 / Marus® Pro 72

PN	DESCRIPTION	PRICE
8688	H-3 Bulb	\$16.00



- 24 Volt AC / 150 watt
- DentaleZ Distinction / Forest, Faro Cool Beam / Henry Schein

PN	DESCRIPTION	PRICE
8687	Replacement Bulb	\$19.00



- 24 Volt AC / 150 watt
- Dentech® / Eurodent, Faro Sunlight 70 / J. Morita / Knight L LSM / Planmeca Delight / SDS 1350, Siemens A1/E1 Sirona

PN	DESCRIPTION	PRICE
8696	Replacement Bulb	\$10.00



- 24 Volt AC / 150 watt
- Pelton & Crane® LF+ / LF I / LF II / LF III

PN	DESCRIPTION	PRICE
8683	Replacement Bulb, 3321879	\$23.00



- 28 Volt AC / 75 watt
- Ritter J Starlite

PN	DESCRIPTION	PRICE
8689	Replacement Bulb	\$30.00



- 24 Volt AC / 75 watt
- MDT Aseptic 2000

PN	DESCRIPTION	PRICE
2404	Replacement Bulb, 516983	\$50.00



- 24 Volt AC / 100 watt
- DCI Equipment light

PN	DESCRIPTION	PRICE
8684	Replacement Bulb	\$23.00



8692
120 Volt AC /
250 watt



8693
12 Volt AC /
75 watt



8694
12 Volt AC /
100 watt



8695
14 Volt AC /
35 watt

Curing Light Replacement Bulbs

PN	DESCRIPTION	PRICE
8692	Chapman Huffman 60-575-00, 60-580-00, 60-585-00 Dentsply Triad 2000 Kavo Vicon DLS, LS Illuminator, Polar II Lares Quartz Fire SX Midwest Insight I and II, Tradition I Sci Can Dual Lux 2 Curing	\$30.50
8693	3MVisiluxI, VisiluxII, XL3000 Almore OP II Coltene Coltolux Curing Units II, III & IV Darby Dental Superdent 2001, 2005 Degussa Degulux DemetronOptilux101, Optilux400-403, Demetron VCL-100, VCL-200, VCL-300 First Medica Hilux 200 Lares Apollo CP Lasac Tech LTI-5000 Megadental Megalux Motloid Compolite 660 Penn Med 300L and 310 Curing Guns Phasealloy Witelite Gun Unitek Ortholux, Ortholux XT Viva Dent Heliolux GT COE Lunar TA	\$42.00

8694	EFOS Lite Proden Executor Henry Schein Kinetic Instrument Sunspot S.S. White Profile Curing Lite Teledyne Getz Focus L.D. Caulk Prismetics Lite	\$42.00
------	---	---------

8695	Healthco Aristocrat II L.D. Caulk Maxlight Demetron Optilux 150	\$34.00
------	---	---------



First Medica LED Blast
Only \$675.00



Vector Turbo LED Curing Light
Only \$549.00



First Medica LEDMAX 550 Cordless
Only \$725.00



First Medica Blast Light
Now Only \$699.00



First Medica Ultra Blast
Only \$625.00



MIDMARK SPEED-CLEAN

ONLY: \$27.00

PELTON & CRANE OMNI
CLEANER

ONLY: \$15.99



TUTTNAUER CHAMBER BRITE

ONLY: \$55.00

Midmark® / Ritter M7 Door Seal

• For use w/ Midmark® M7 & 7

PN	DESCRIPTION	PRICE
Genuine Parts		
053-0527-00	Midmark M11 Genuine Door Gasket	\$58.00
002-0504-00	Midmark M11 Genuine Door Gasket, Hoop & Spacer Kit	\$121.00
053-0366-00	Midmark M9 Genuine Door Gasket	\$52.00
002-0361-00	Midmark M9 Genuine Door Gasket, Hoop & Spacer Kit	\$109.00

Economy Parts

2117	Door Seal M7 (Midmark #H98134 & #33166)	\$35.00
2195	Midmark M11 Door Gasket, Hoop & Spacer Kit	\$90.00
2194	Midmark M11 Door Gasket, Hoop & Spacer Kit	\$95.00

MDT & Harvey Door Gaskets

PN	DESCRIPTION	PRICE
2098	Door Seal for MDT GLS 8" (MDT #2-60834)	\$45.00
2099	Door Seal for MDT GLS 10" (MDT #2-513005)	\$50.00
2097	Door Seal (Quad Ring) for Chemiclave 6000, 8000 & Aquaclave 30 (MDT #260006701)	\$45.00
2108	Door Seal for Chemiclave 5500, 7000 & Aquaclave 20 (MDT #280000301)	\$30.00
2109	Door Seal for Chemiclave E, 4000, 5000 & Aquaclave 10 (MDT #250007801)	\$14.00

Pelton & Crane® Door Seals & Gaskets

PN	DESCRIPTION	PRICE
Genuine Parts		
004014	Door Seal for 8"	\$70.30
004341	Door Seal for 10"	\$83.35
1539241	Door Seal for 8" Delta / Delta XL / Validator	\$62.10
1539407	Door Seal for 10" Delta / Delta XL / Validator	\$92.64
3322281	Door Spacer For All 8" or 10" Delta / Delta XL / Validator	\$13.45

Economy Parts

2100	Door Seal for 8" OCM	\$40.80
2101	Door Seal for 10" OCR	\$47.20
2102	Door Seal for 8" Delta / Delta XL / Validator	\$45.00
2103	Door Seal for 10" Delta / Delta XL / Validator	\$50.00
2104	Door Spacer For All 8" or 10" Delta / Delta XL / Validator	\$6.00

Scican 2000 & 5000 Cassette Seals

PN	DESCRIPTION	PRICE
Genuine Parts		
SCI 01-101649S	5000 Seal	\$119.00
SCI 01-100028S	2000 Seal	\$113.00

Tuttnauer Door Gaskets

PN	DESCRIPTION	PRICE
Genuine Parts		
02610020	Door Seal for Tuttnauer 1730 Series	\$37.00
02610118	Door Seal for Tuttnauer EZ9, 2340 Series	\$64.00
02610023	Door Seal for Tuttnauer EZ10, 2540 Series	\$67.00

Economy Parts

2105	Door Seal for Tuttnauer 1730 Series	\$37.00
2106	Door Seal for Tuttnauer 2340 Series, serial #8805 & below	\$50.00
2107	Door Seal for Tuttnauer 2540 Series	\$54.00



DCI Precision Comfort™ Syringe

The next generation of DCI syringes – the Precision Comfort™ Series – is a response to what dental professionals have asked for.

The syringes blend a patented ergonomic design & Precision Touch™ button technology, allowing practitioners to more precisely control & deliver the amount of air and/or water they want to use.



Precision Touch™ Buttons
New Precision Touch™ Buttons improves ergonomics & reduces hand fatigue.

- 45% Softer Buttons
- 30% Increased Angle
- 20% Increased Button Size

Patent Pending Precision Touch™ Buttons deliver water (one drop to a full stream) – air (one puff to a full flow) – or a combination of both.



Ergonomic Finger Rest
Comfort fit designed to reduce hand fatigue



Quick-Change Tip
• Quick & easy tip removal w/o the need for tools
• Securely locks tip in place for peace of mind

Precision Comfort™ Syringe

LESS TUBING	DARK SURF	GRAY	LT SAND	STERLING	BLACK	DESCRIPTION	PRICE
3600						Syringe Only	\$71.00
3615						Syringe Head Only	\$64.00
	3609	3603	3605	3607	3601	Coiled Tubing	\$79.90
	3610	3604	3606	3608	3602	Straight Tubing (7')	\$79.90

DCI Quick-Clean® Syringes



3430

- Available in standard, continental & valve core styles
- Smooth contours for quick, thorough cleaning
- Quick-Change® tip disconnect
- Uses standard autoclavable tips or disposable tips
- Asepsis tubing standard
- Includes service kit when purchased w/ tubing

Quick-Clean® Standard Syringe

LESS TUBING	DARK SURF	GRAY	LT SAND	STERLING	BLACK	DESCRIPTION	PRICE
3430						Syringe Only	\$67.00
3429						Syringe Head Only	\$60.00
	3444	3438	3440	3443	3436	Coiled Tubing	\$75.90
	3445	3439	3441	3442	3437	Straight Tubing (7')	\$75.90

Quick-Clean® Valve Core Style Syringe

LESS TUBING	DARK SURF	GRAY	LT SAND	STERLING	BLACK	DESCRIPTION	PRICE
3470						Syringe Only	\$67.00
	3483	3478	3474	3482	3476	Coiled Tubing	\$75.90
	3484	3479	3475	3481	3477	Straight Tubing (7')	\$75.90

Quick-Clean® Continental Syringe

LESS TUBING	DARK SURF	GRAY	LT SAND	STERLING	BLACK	DESCRIPTION	PRICE
3450						Syringe Only	\$71.00
	3464	3459	3461	3463	3457	Straight Tubing (7')	\$79.90



3450

Circulating Syringe

DESCRIPTION	PRICE
Add "C" to the above number (Not available w/ asepsis style tubing)	\$99.90
Circulating Syringe Only, Less Kit & Tubing	\$91.00

Automatic Series IV Arm Mounted Delivery System for 3 HP



ONLY \$1,393!

Retail: \$1,955

DCI Autoclavable Syringes



Deluxe Autoclavable Syringe

LESS TUBING	DARK SURF	GRAY	LT SAND	STERLING	BLACK	DESCRIPTION	PRICE
3369						Head, Handle & Q.D.	\$153.00
3370						Head, Handle	\$107.00
3320						Quick Disconnect	\$98.00
3325						Q.D. Holder	\$3.00
	3404	3378	3374	3399	3376	Coiled Tubing	\$194.00
	3405	3379	3375	3398	3377	Straight Tubing (7')	\$194.00

Deluxe Autoclavable Continental Syringe

LESS TUBING	DARK SURF	GRAY	LT SAND	STERLING	BLACK	DESCRIPTION	PRICE
3349						Head, Handle & Q.D.	\$153.00
3350						Head, Handle	\$107.00
	3406	3359	3355	3361	3357	Straight Tubing (7')	\$194.00



3320



3350

- Patented quick-disconnect turns air & water off when syringe is removed



3112

Syringe Water Heaters – 220/240 VAC

- 220/240 VAC Heater
- Compact reservoir
- Manual on/off control
- 4" high x 2" diameter
- Recommended mounting in upright position

Includes 10-32 barbs for

- 1/8" O.D. tubing, sleeves & mounting hardware
- Adjustable temperature control, preset at 105° F
- For use w/ DCI circulating syringes only

PN	DESCRIPTION	PRICE
3112	Manual on/off, 220/240 VAC	\$400.00

Series IV Cabinet Mount Automatic Control Unit for 3 HP

ONLY \$693!



Retail: \$935

Series IV Manual Cabinet Mount or Wall Mounted Delivery System for 2 HP



ONLY \$493!

Retail: \$670

Autoclavable Indexing Syringe Tips

- Interchangeable in most common syringe heads
- Provides resistance to rotation in the DCI quick-change adapter to facilitate cheek retraction
- Patented design exclusive to DCI International



PN	DESCRIPTION	PRICE
3180	Indexing Syringe Tip (1 ea.)	\$5.90
3181	Indexing Syringe Tip (pkg of 5) (\$5.50 ea.)	\$27.50
3182	Indexing Syringe Tip (pkg of 50) (\$5.10 ea.)	\$255.00

Autoclavable Syringe Tips

- 3060 tips are standard in the Quick-Change® style DCI syringe

NOTE: The autoclavable syringe tips are interchangeable and are used in syringes with the old style nut retainer and in the DCI Quick-Change® tip disconnect. The DCI syringe tips offer more air outlet ports than the A-dec® tip.



PN	DESCRIPTION	PRICE
3060	Quick-Change® Autoclavable Tip (1 ea.)	\$4.80
3061	Quick-Change® Autoclavable Tip (pkg of 5) (\$4.70 ea.)	\$23.50
3059	Quick-Change® Autoclavable Tip (pkg of 50) (\$4.00 ea.)	\$200.00

Autoclavable A-dec® Style Syringe Tips

- With alignment rings
- Autoclavable

NOTE: These parts are not made by or in any way connected with A-dec®.



PN	DESCRIPTION	PRICE
3054	A-dec® Autoclavable	\$4.90
3055	(Pkg of 5) (\$4.80 ea.)	\$24.00
3056	(Pkg of 50) (\$4.10 ea.)	\$205.00

A-dec® Syringe Parts & Tools

- Syringe button retainer screw (product produced 1995 & later)

PN	DESCRIPTION	PRICE
9286	A-dec® Syringe Tool	\$13.20
9150	Syringe button screw, (A-dec® #23.1193.00) (pkg of 5)	\$15.00

- Fits Tri-Flow, lever, soft touch button & continental syringe

PN	DESCRIPTION	PRICE
2041	Brass Swivel Sleeve, (A-dec® #23.0886.00) (pkg of 5)	\$5.00
3090	Valve Core, (A-dec® #026.033.00) (pkg of 10)	\$4.80

- Fits Tri-Flow syringes, soft touch button, lever & continental syringe

PN	DESCRIPTION	PRICE
9028	Conical Button Spring, (A-dec® #013.038.00) (pkg of 10)	\$7.50

PN	DESCRIPTION	PRICE
9186	Syringe Button for Soft Touch Syringes (A-dec® #23.1232.01)	\$12.00



Syringe Tools

PN	DESCRIPTION	PRICE
9287	DCI Syringe 3 in 1 Tool, Includes Valve Core Tool, Quick-Change® Adapter Tool & Button Pin Removal Tool	\$8.00
8059	Syringe Button Removal Tool	\$11.00
3097	Syringe Nut Wrench	\$1.75
3096	Valve Core Tool	\$2.50



For Repair of DCI Standard & Continental Syringes

- Fits DCI Quick-Change® Tip Syringes
- Includes: 1 tip adapter assembly, 1 tip adapter spring, 1 tip adapter pin, 1 syringe head O-ring, 1 5/32" hex wrench

PN	DESCRIPTION	PRICE
3088	Autoclavable Syringe Adapter Kit	\$28.00
3089	Syringe Adapter Kit	\$27.00



DCI Syringe Adapter Kits

- For Quick-Clean® standard & continental style syringes

PN	DESCRIPTION	PRICE
3085	Syringe Button Cartridge & Conical Spring	\$8.70
3066	Syringe Repair Kit	\$7.75



- For Quick-Clean® valve core style syringes

PN	DESCRIPTION	PRICE
3093	Syringe Button w/ Spring	\$8.95
9674	Spring Only	\$.70
3076	Syringe Repair Kit	\$7.95
3090	Valve Core (pkg of 10)	\$4.80



For Use in the Repair of DCI Autoclavable Syringes

- For Deluxe Autoclavable Valve Core style syringes

PN	DESCRIPTION	PRICE
3092	Syringe Button w/ Spring	\$8.95
9674	Spring Only	\$.70
3072	Syringe Repair Kit	\$8.50



- For Autoclavable Continental style syringes

PN	DESCRIPTION	PRICE
3086	Syringe Button & Conical Spring	\$11.00
3045	Syringe Repair Kit	\$9.50

Precision Comfort™ Premium Autoclavable Extended Vacuum Valves

- Single piece anodized aluminum body
- Easy removal lever & spool valve assembly
- Resistant to cleaning solutions
- Quick disconnect – 360° swivel

5105



PN	DESCRIPTION	PRICE
5105	Single Valve w/ Quick-Disconnect	\$49.90
5106	Single Valve w/o Quick-Disconnect	\$41.90
5107	Replacement Quick-Disconnect Swivel for 1/2" Tubing	\$13.00
5108	Replacement Lever & Spool Assembly	\$20.00

Precision Comfort™ Premium Autoclavable Short Vacuum Valves

- Single piece anodized aluminum body
- Easy removal lever & spool valve assembly
- Resistant to cleaning solutions
- Quick-disconnect – 360° swivel

5125



PN	DESCRIPTION	PRICE
5125	Single Valve w/ Quick-Disconnect	\$46.90
5126	Single Valve w/o Quick-Disconnect	\$39.50
5107	Replacement Quick-Disconnect Swivel for 1/2" Tubing	\$13.00
5108	Replacement Lever & Spool Assembly	\$20.00

Precision Comfort™ Premium Autoclavable Saliva Ejectors

- Single piece anodized aluminum body
- Easy removal lever & spool valve assembly
- Resistant to cleaning solutions
- Quick-disconnect – 360° swivel

5215



PN	DESCRIPTION	PRICE
5215	Single Valve w/ Quick-Disconnect	\$43.90
5216	Single Valve w/o Quick-Disconnect	\$36.90
5217	Replacement Quick-Disconnect Swivel for 3/16" Tubing	\$11.00
5218	Replacement Lever & Spool Assembly	\$20.00

A-dec® Style Vacuum Valves

PN	DESCRIPTION	PRICE
5061	A-dec® Style Autoclavable Extended Vacuum Valve	\$70.00
5060	A-dec® Style Autoclavable Short Vacuum Valve	\$64.00
5062	A-dec® Style Autoclavable Saliva Ejectors	\$64.00



Note: These parts are not made by or in any way connected to A-dec®.

Precision Comfort™ Standard Autoclavable Extended Vacuum Valves

- Single piece anodized aluminum body
- Smooth plastic lever action
- Quick-disconnect – 360° swivel
- All components are autoclavable

5115



PN	DESCRIPTION	PRICE
5115	Single Valve w/ Quick-Disconnect	\$37.00
5116	Single Valve w/o Quick-Disconnect	\$29.00
5117	Replacement Quick-Disconnect Swivel for 1/2" Tubing	\$13.00
5118	Replacement Lever & Spool Assembly	\$12.00

Precision Comfort™ Standard Autoclavable Short Vacuum Valves

- Anodized aluminum body
- Smooth plastic lever action
- Quick-disconnect – 360° swivel
- All components are autoclavable
- Disassemble w/o tools for cleaning & lubrication

5120



PN	DESCRIPTION	PRICE
5120	Single Valve w/ Quick-Disconnect	\$35.00
5121	Single Valve w/o Quick-Disconnect	\$28.00
5117	Replacement Quick-Disconnect Swivel for 1/2" Tubing	\$13.00
5118	Replacement Lever & Spool Assembly	\$12.00

Precision Comfort™ Standard Autoclavable Saliva Ejectors

- Anodized aluminum body
- Quick disconnect – 360° swivel
- All components are autoclavable
- Disassemble w/o tools for cleaning & lubrication

5225



PN	DESCRIPTION	PRICE
5225	Single Valve w/ Quick-Disconnect	\$31.00
5226	Single Valve w/o Quick-Disconnect	\$24.00
5227	Replacement Quick-Disconnect for 3/16" Tubing	\$11.00
5228	Replacement Lever & Spool Assembly	\$10.00

Standard Autoclavable Extended Vacuum Valves

- Anodized aluminum body
- Smooth plastic lever action
- Quick-disconnect – 360° swivel
- All components are autoclavable

5150



PN	DESCRIPTION	PRICE
5150	Single Valve w/ Quick-Disconnect	\$37.00
5151	Single Valve w/o Quick-Disconnect	\$29.00
5082	Replacement Quick-Disconnect Swivel for 1/2" Tubing	\$10.00
5083	Replacement Quick-Disconnect Swivel for 5/8" Tubing	\$16.00
5171	Replacement Lever	\$6.00

Standard Autoclavable Short Vacuum Valves

- Anodized aluminum body
- Smooth plastic lever action
- Quick-disconnect – 360° swivel
- All components are autoclavable
- Disassemble w/o tools for cleaning & lubrication
- Designed to be used w/ vacuum holders
- Includes brush for cleaning autoclavable vacuum valve

PN	DESCRIPTION	PRICE
5148	Single Valve w/ Quick-Disconnect	\$35.00
5149	Single Valve w/o Quick-Disconnect	\$28.00
5082	Replacement Quick-Disconnect Swivel for 1/2" Tubing	\$10.00
5083	Replacement Quick-Disconnect Swivel for 5/8" Tubing	\$16.00
5171	Replacement Lever	\$6.00

Standard Autoclavable Saliva Ejectors

- Anodized aluminum body
- Quick disconnect – 360° swivel
- All components are autoclavable
- Disassemble w/o tools for cleaning & lubrication
- Smooth plastic lever action
- Designed to be used w/ standard holders
- Includes brush for cleaning

PN	DESCRIPTION	PRICE
5650	Single Valve w/ Quick-Disconnect, w/ Threaded Tip	\$45.00
5651	Single Valve w/o Quick-Disconnect, w/ Threaded Tip	\$38.00
5660	Single Valve w/ Quick-Disconnect	\$31.00
5661	Single Valve w/o Quick-Disconnect	\$24.00
5092	Replacement Quick-Disconnect for 3/16" Tubing	\$7.00
5670	Replacement Lever	\$5.00



Solids Collector Screens

- For A-dec® Cascade & Performer

PN	DESCRIPTION	PRICE
6818	A-dec® Cascade Disposable Screen (A-dec® #11.1191.00) (pkg of 144)	\$60.00

Solids Collector Screens

PN	DESCRIPTION	PRICE
6821	Pelton & Crane® Spirit Disposable Screen (pkg of 144)	\$100.00

Solids Collector Screens

- Covered disposable vacuum trap
- Available in 1 7/8" & 2 1/8"

PN	DESCRIPTION	PRICE
5820	Covered Screen, 1 7/8"	\$65
5832	Covered Screen, 1 7/8" (pkg of 100)	\$50.00
5889	Covered Screen, 2 1/8"	\$65
5887	Covered Screen, 2 1/8" (pkg of 100)	\$50.00

Solids Collector Screens

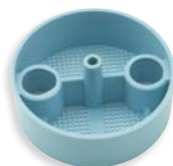
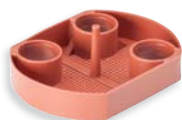
- 1 7/8" diameter
- Disposable (pkg of 100)
- For use w/ 5810 & 5860
- Vacuum canister

PN	DESCRIPTION	PRICE
5818	Screen, Disposable (pkg of 100)	\$50.00

Solids Collector Screens

- 2 1/8" diameter
- Disposable screen (pkg of 100)
- For use w/ 5872 & 5873
- Vacuum canister

PN	DESCRIPTION	PRICE
5817	Screen, Disposable, 2 1/8" (pkg of 100)	\$50.00



MIDMARK POWERVAC DRY-VACUUMS



The Midmark PowerVac is the first dry vacuum to combine the dental professional's most desired features into one flexible, maintenance-free, performance-driven system. The PowerVac creates a new standard for dental dry vacuums:

Unrivalled power and performance – up to 18"Hg

Zero maintenance oil-less and waterless
Quiet operation
Upgradable flexibility
Unmatched 5 year total system warranty; 10 year pump warranty

Saliva Ejector Tips

- Push-on or screw-on
- Tips are autoclavable
- Latex-free



PN	DESCRIPTION	PRICE
5754	Push-on Autoclavable, Gray	\$2.80
5750	Push-on Autoclavable, Black	\$2.80
5742	Screw-on Autoclavable Tip, Gray	\$20.56

437

Saliva Tip Adapter

- Adapts to HVE valve
- Not autoclavable



PN	DESCRIPTION	PRICE
5752	Saliva Ejector Adapter	\$10.00

Saliva Ejector Tip

- Push-on autoclavable tip
- Without valve
- Removable clean out basket



PN	DESCRIPTION	PRICE
5720	Saliva Ejector Assembly	\$11.50

Tubing Adapter

- 1/2" I.D. tube x 3/8" O.D. barb
- Connects 3/8" I.D. vacuum tubing to the spare HVE port on vacuum canisters



PN	DESCRIPTION	PRICE
5745	Tubing Adapter	\$8.50

Saliva Ejector Adapter

- 7/16" O.D. x 7/32" barb
- Inserts into vacuum canister port or HVE valve



PN	DESCRIPTION	PRICE
5751	Tubing Adapter	\$5.00

Asepsis Vacuum Tubing



PN	DESCRIPTION	PRICE / PER FT.
731	1/2" I.D. Gray (per ft.)	\$2.30
732	5/8" I.D. Gray (per ft.)	\$3.90
743	1/2" I.D. Light Sand (per ft.)	\$2.30
739	5/8" I.D. Sterling (per ft.)	\$3.90



BioFree™ Asepsis 4-Hole Handpiece Tubing



437

DARK SURF	GRAY	LT SAND	STERLING	DESCRIPTION	PRICE
439T	437T	438T	442T	Straight 7 ft. w/ Connector	\$36.00
439	437	438	442	Straight (per ft.)	\$3.45
439R	437R	438R	442R	100 ft. Roll	\$293.00
439B	437B	438B	442B	100 ft. Box	\$293.00

BioFree™ Asepsis 3-Hole Handpiece Tubing



327

GRAY	LT SAND	DESCRIPTION	PRICE
327T	328T	Straight 7 ft. w/ Connector	\$31.00
327	328	Straight (per ft.)	\$2.75
327R	328R	100 ft. Roll	\$235.00
327B	328B	100 ft. Box	\$235.00

BioFree™ Asepsis 2-Hole Syringe Tubing



237

DARK SURF	GRAY	LT SAND	STERLING	DESCRIPTION	PRICE
239	237	238	240	Straight (per ft.)	\$1.65
239R	237R	238R	240R	100 ft. Roll	\$140.00
239B	237B	238B	240B	100 ft. Box	\$140.00

BioFree™ Supply Tubing



1222B

BLUE	RED	DESCRIPTION	PRICE
1222	1223	1/8" O.D. (per ft.)	\$.75
1222R	1223R	1/8" O.D. 100 ft. Roll	\$73.00
1222B	1223B	1/8" O.D. 100 ft. Box	\$73.00
1422	1423	1/4" O.D. (per ft.)	\$1.74
1422R	1423R	1/4" O.D. 100 ft. Roll	\$148.00
1422B	1423B	1/4" O.D. 100 ft. Box	\$148.00
1622		3/8" O.D. (per ft.)	\$3.67
1622R		3/8" O.D. 100 ft. Roll	\$312.00
1622B		3/8" O.D. 100 ft. Box	\$312.00

Standard 3-Hole Syringe Tubing



GRAY	BLACK	DESCRIPTION	PRICE
332	331	Straight (per ft.)	\$.90
332R	331R	100 ft. Roll	\$81.00
332B	331B	100 ft. Box	\$81.00
332C	331C	Coiled	\$10.50

Asepsis "Sheathed" Corrugated Tubing



PN	DESCRIPTION	PRICE / PER FT.
721	1/2" I.D. Gray (per ft.)	\$2.95
722	1" I.D. Gray (per ft.)	\$4.10

Standard 3-Hole Foot Control Tubing

- Polyurethane

DARK SURF	GRAY	LT SAND	STERLING	DESCRIPTION	PRICE
350	343	348	349	Straight (per ft.)	\$1.70
350R	343R	348R	349R	100 ft. Roll	\$148.00
350B	343B	348B	349B	100 ft. Box	\$148.00

KEYSTONE GELATO TOPICAL ANESTHETIC GEL

Contain 20% Benzocaine for effective pain relief. Provides temporary relief of pain during procedures including local anesthetic injections, periodontal curettage, impression taking, scaling, intra-oral radiographs, root planning and prophylaxis.



TBGBG Bubble Gum x 1oz.

TBGPC Pina Colada x 1oz.

QTY:	1-2	3-4	5+
PRICE:	\$6.50	\$5.99	5.79

SEPTODONT LIDOCAINE HCL 2% W/ EPI

Injectable Anesthetic with quick onset time. Mylar wrapped cartridges are shatter resistant. Color-coded plungers and labels make identification easy. Satisfaction guaranteed. Meets all FDA requirements.

50BX LIDOCAINE HCL2%+EPI 1:100 COOK-WAITE



LIDORED

QTY:	1-2	3-4
PRICE:	\$28.75	\$26.28

KENDALL PLASTIC HUB MONOJECT NEEDLES



Plastic Hubs # 400

KH-0041 25 ga. Short red *Rigid autoclavable polypropylene hard pack.*
KH-0033 25 ga. Long red *Tamper-evident heat stake.*
KH-0066 27 ga. Short yellow *Self-aligning universal fit design. Ultra sharp, tri-beveled.*
KH-0058 27 ga. Long yellow
KH-0173 30 ga. X-short blue
KH-0074 30 ga. Short blue

Metal Hubs # 401

KH-1049 25 ga. Short red,
KH-1031 25 ga. Long red
KH-1064 27 ga. Short yellow
KH-1056 27 ga. Long yellow
KH-1171 30 ga. X-short blue
KH-1072 30 ga. Short blue

QTY:	1-2	3-4	5+
PRICE:	\$14.50	\$13.99	12.79

SEPTODONT SEPTOCAINE® 4% WITH EPINEPHRINE

Septocaine® is the # 1 Branded Dental Anesthetic in the United States*. Septocaine with epinephrine 1:100,000 is preferred during operative or surgical procedures when improved visualization of the surgical field is desirable.

Fast onset (1 to 9 minutes) to avoid delay before effective analgesia is achieved.

Predictable duration of anesthesia: up to 60 minutes for infiltration injections and 120 minutes for nerve blocks.



LIDO4PERCEN

QTY:	1-2	3-4
PRICE:	\$55.75	\$52.50

VIVACAINE CART 0.5% 1:200 W/EPI



Anesthesia may last two to three times longer than lidocaine and mepivacaine for dental use, in many patients up to 7 hours.

Onset of action is usually 2 to 10 minutes.

No-methylparaben formulation to avoid allergic reactions on sensitive patients. 100 percent latex free components to help reduce allergic responses.

Terminal sterilization of product/cartridges for safe use.

Mylar label covered glass cartridges to minimize risk of wound in the event of a cartridge breakage.

LIDOVIVA

QTY:	1-2	3-4
PRICE:	\$55.75	\$52.50

TOKUYAMA ESTELITE SIGMA QUICK® SYRINGE 3.8G/SYRINGE

Supra-nano, spherically filled, Universal Composite

ESTELITE SIGMA QUICK® is a universal, supra-nano filled restorative material utilizing 100% spherical filler technology. With a filler weight of 82% (71% volume), the spherical fillers provide a uniform diffusion of light, allowing for a more forgiving shade match, and superb blend.



Estelite Sigma Quick is available in the following shades.



TOK 20506

QTY:	1	2+
PRICE:	\$83.60	\$50.16

TOKUYAMA BOND FORCE® STANDARD-KIT

Outstanding bond strength

Thin film thickness (8µm)

Designed for cut/uncut enamel and dentin

Only one application required

One Step: No etching, No rinsing, No mixing Self-leveling technology

(Uniform adhesive layer) Less technique sensitive

Extended working time (5 minutes)

Fluoride releasing



**50 unit doses (0.1mL x 50)
50 disposable applicators**

TOK14951

QTY:	1	2+
PRICE:	\$142.75	\$135.00

MICROBRUSH APPLICATORS

Applicators bend easily for accurate placement of solution in hard to reach areas. Non-linting, non-absorbent fiber tips hold solution in suspension until applied. The applicator comes in a convenient plastic tube for easy dispensing to surrounding teeth.

MFA400 Fine, Pink/Yellow

MFP400 Fine, Pink

MFY400 Fine, Yellow

MRA400 Assorted

MRP400 Purple Regular



400/pack

QTY:	1	2+
PRICE:	\$35.00	\$29.40

PULPDENT ETCH RITE ETCHING GEL

Etch-Rite is a superior quality dental etching gel specially formulated for maximum working and handling characteristics to surrounding teeth. In addition, the spherical fillers provide low composite wear over time and are safe for opposing dentition while causing less wear on opposing teeth.



PUL ET-24	Etch Rite Bulk Pack 1.2ml 24 per pack	\$55.95
PUL ET-50	Etch Rite Jumbo Syr. Kit 2-25ml	\$37.95
PUL ETCH	Etch-Rite Etch Gel Syr. 4/bx	\$14.99
PUL 25B50	Etch Rite Applicator Tips 50/bg	\$9.59

PULPDENT PORCELAIN ETCH GEL KIT: 4 X 1.2ML SYRINGES + 8 PRE-BENT APPLICATORS

A one-minute application etches porcelain crowns, veneers, inlays and fractured porcelain surfaces prior to bonding. This superior quality porcelain etch gel will not stain porcelain, composites or resin cements.



PUL PEG

QTY:	1	2+
PRICE:	\$36.00	\$32.95

PULPDENT ETCH ROYALE ETCHING GEL 1.2ML SYRING 24/PK

For clinicians who prefer a creamier gel that readily settles into dentin and enamel, but does not run, Etch Royale is the perfect choice. The darker blue color is easy to see in thin applications. Etch Royale has all the same features as Etch-Rite, but the consistency is slightly creamier than its famous sister product.



PUL ER24

QTY:	1	2+
PRICE:	\$62.00	\$57.95

TOKUYAMA REBASE II DENTURE RELINE MATERIAL

Chairside And Laboratory Hard Denture Reline Material

REBASE II is a chairside and laboratory hard reline material, for use with complete or partial dentures and partial denture repairs. Without compromising any benefits from its predecessor, Tokuso® Rebase, Tokuyama® Rebase II offers better polishability, lower heat generation for in-mouth curing, higher mechanical strengths, improved handling and less odor/taste. Curing in 4min 30sec intraorally, Rebase II is designed for long-term denture relining applications.

- 80g Powder
- 50mL Liquid bottle
- 15mL Adhesive bottle
- 48g Resin Hardener



TOK 20506

QTY:	1	2+
PRICE:	\$115.00	\$105.00

TOKUYAMA REBASE II POWDER



80/grams

TOK 20506

QTY:	1	2+
PRICE:	\$54.00	\$48.50

TOKUYAMA REBASE LIQUID



50/ml

TOK 20506

QTY:	1	2+
PRICE:	\$54.00	\$48.50

PULPDENT LIME-LITE KIT

Contains Hydroxyapatite in a urethane dimethacrylate resin
Fluoride Releasing - Radiopaque - Tooth Shade



PUL LIME

QTY:	1	2+
PRICE:	\$45.00	\$42.50

DEFEND PIT AND FISSURE SEALANT

Chairside And Laboratory Hard Denture Reline Material

- Covers and seals pits and fissures in occlusal surfaces of posterior teeth to aid resistance to caries in those surfaces. Its very low viscosity resin system has a white opaque color to help identify retention at recall appointments. The direct delivery syringe system provides a quick and easy application method. The resin cures quickly to form a hard and retentive sealant.
- Contains: 4 -1GM Syringes LC Opaque Sealant, 1-3ml Bottle Etchant
- Liquid, 6 -22GA Black Metal Pre-Bent Syringe Tips



MYD PF -1000

QTY:	1	2+
PRICE:	\$26.75	\$23.00

DISPOSABLES

DEFEND AIR WATER DISPOSABLE SYRINGE TIPS

DEFEND Air/Water 3-Way Syringe Tips are an excellent alternative to typical metal autoclavable tips.



MYD AW-1000: CLEAR
MYD AW-3000: BLUE

1-2	3-4	5+
\$42.50	\$41.00	\$37.25

DEFEND 2 X 2 GAUZE

A great alternative to cotton filled sponges, and provides for maximum absorbency and little adhesion to wounds



MYD NW-0200

1-2	3-4	5+
\$29.75	\$27.64	\$25.50

PINNACLE EZ TIPS DISPOSABLE SYRINGE TIPS

Metal core tips with rounded ends and locking retention groove that locks in place.



NY 44150

1-2	3-4	5+
\$49.50	\$45.00	\$44.25

AVANT 2 X 2 GAUZE NON-WOVEN STERILE SPONGES

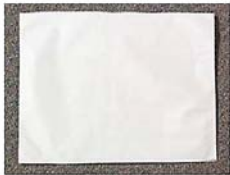


3000/CS

NON21224

1-2	3-4	5+
\$59.00	\$55.64	\$52.99

TIDI PRODUCTS HEADREST COVERS



Fabricel headrest cover, poly-lined, White 500/cs

BAN 919711	10" x 10"	1 bx @	36.34
BAN 919811	10" x 13"	1 bx @	40.30
BAN 919513	13" x 13"	1 bx @	67.21

DEFEND HEADREST COVERS



Size: 250/box

MYD BF-9000 10 X 10

MYD BF-9500 14 X 9.5

1-2	3-4	5+
\$12.75	\$11.50	\$10.50

DEFEND 5 OZ. CUPS



MYD DC-7000 White
MYD DC-7001 Blue
MYD DC-7002 Mauve
MYD DC-7003 Green
MYD DC-7004 Lavender

1	2	3+
\$26.80	\$24.75	\$22.97

DEFEND 2 PLY POLY PATIENT BIBS

13X18

500/cs



MYD PB-8000 White
MYD PB-8001 Blue
MYD PB-8002 Pink
MYD PB-8003 Green
MYD PB-8004 Lavender

1	2	3+
\$26.85	\$25.00	\$22.99

TIDI PRODUCTS 5 OZ. CUPS



BAN 9210 Lavender
BAN 9211 White
BAN 9212 Green
BAN 9213 Blue
BAN 9218 Peach

1	2	3+
\$39.38	\$36.35	\$30.42

TIDI PRODUCTS 2 PLY POLY PATIENT BIBS

13X18

500/cs



BAN 917459 Lavender
BAN 917462 Green
BAN 917463 Blue
BAN 917470 Teal
BAN 917461 White

1	2	3+
\$32.27	\$29.79	\$25.93

TIDI PRODUCTS TRAY COVERS

8.5 X 12.25

500/cs



BAN 917459 Lavender
BAN 917462 Green
BAN 917463 Blue
BAN 917470 Teal
BAN 917461 White

1	2	3+
\$32.27	\$29.79	\$23.93

TIDI PRODUCTS 3 PLY POLY PATIENT BIBS

13X18

500/cs



BAN 917400 Lavender
BAN 917402 Green
BAN 917403 Blue
BAN 917410 Teal
BAN 917401 White

1	2	3+
\$37.43	\$34.55	\$32.08

DEFEND 3 & 6 INCH COTTON TIP APPLICATORS



1000/box



MYD CS-3000 - 3 INCH

1-2	3-4	5+
\$6.60	\$6.25	\$5.75

MYD CS-6000 - 6 INCH

1-2	3-4	5+
\$8.20	\$7.57	\$6.99

SINGLE-FOLD TOWELS

White Single Fold Towels 2400/Case

Introducing Medline's Green Tree™ Basics Paper product line.

These paper products are made from 100% renewable sources; made with grass, sugar cane and bamboo.

You will find this product not only "green" it is soft and at a very affordable price.



MEDL NONPBMSFB

QTY:	1	2+
PRICE:	\$35.00	\$33.00

WELTEX COTTON ROLLS



COTTON ROLLS #2 Non-sterile
(box)
2000/box

PER 13

1-2	3-4	5+
\$17.85	\$16.48	\$15.30

C-FOLD TOWELS

White Std C-Fold Towels 2400/Case

Introducing Medline's Green Tree™ Basics Paper product line.

These paper products are made from 100% renewable sources; made with grass, sugar cane and bamboo.

You will find this product not only "green" it is soft and at a very affordable price.



MEDL NON26820

QTY:	1	2+
PRICE:	\$34.00	\$30.00

DEFEND DISPOSABLE LAB COATS



Size: 10/bag
Unit/Case: 5bgs/cs

DEFEND has improved the quality of its lab coats to make them more comfortable for dental professionals. The new coats are now more breathable, while retaining the same fluid-resistance and the knit collar and cuffs they have always had. The nonflam- mable, disposable/reusable coats feature a front pocket and easy-to-use snap closures. The blue coats come designated for both men and women, sized small, medium, large and extra-large. They are packed 50 coats per case.

MYD SG-9003	Small	\$17.49
MYD SG-9004	Medium	\$17.49
MYD SG-9005	Large	\$17.49
MYD SG-9006	X-Large	\$17.49

MULTI-FOLD TOWELS

Medline Multi-Fold Towels, 4000/case

Introducing Medline's Green Tree™ Basics Paper product line.

These paper products are made from 100% renewable sources; made with grass, sugar cane and bamboo.



MEDL NON26810

QTY:	1	2+
PRICE:	\$37.99	\$33.00

KLEENEX FACIAL TISSUE 48/CASE

Kleenex Facial Tissue

48/Case

125 per Box



RUN SS105070121606

QTY:	1	2+
PRICE:	\$6.50	\$5.99

COMMERCIAL TOILET PAPER - 12/CS



Commerical toilet paper. 12/CS,
1000/Roll

RUN JRT-M2

QTY:	1	2+
PRICE:	\$39.99	\$34.76

ICE PACKS - 50/CASE

PACK, COLD, INSTANT, STANDARD,
4.75X6.25",JRLatex allergies. Medium.
100/Box.

MEDL MDS137020

QTY:	1	2+
PRICE:	\$49.50	\$45.50



TIDI PRODUCTS HIGH VOLUME EVACUATION TIPS NON-VENTED

Fits all standard evacuator hose ends and feature smooth edges.



1000/case

BAN 9304 6 inches

1-5	6-9	10+
\$54.17	\$49.99	\$41.85

DEFEND HIGH VOLUME EVACUATION TIPS COMBO OF NON-VENTED & VENTED

Fits all standard evacuator hose ends and feature smooth edges, HIGH Volume Evacuation TIP vented

100/bag
10 bags/case



MYD VE-1121 6 inches

1-5	6-9	10+
\$5.70	\$5.26	\$4.40

TIDI PRODUCTS SALIVA EJECTORS



Saliva ejectors with molded-in copper-plated wire bend easily, then retain their shape for patient comfort. Smooth tips are securely fastened. White, 6-inch ejector with white tip.

BAN 9306 White

BAN 9307 Clear

100/bag
10 bags/case

1-5	6-9	10+
\$4.81	\$4.44	\$4.13

DEFEND SURGICAL ASPIRATING TIPS

MYD ST-1020 Blue 1/16" diameter 10bgs/cs

MYD ST-1021 White 1/8" diameter 10bgs/cs

MYD ST-1023 Green 1/4" diameter 10bgs/cs



25/bag

1-5	6-9	10+
\$6.50	\$6.00	\$5.57

DEFEND STANDARD SALIVA EJECTORS

MYD SE-7000 White

MYD SE-7001 Clear

MYD SE-7002 Assorted

100/bag

10 bags/case



Fit all standard saliva ejector hose ends. Pliable, holds their shape and the tip minimizes tissue impingement.

1-5	6-9	10+
\$4.10	\$3.78	\$3.51

ECOLOGICAL LABORATORIES EVACUATION CLEANER



MICROBE-LIFT/EVAC, for evac. systems
1 Gallon. An Allstar Technician Recommended Product!

ECO1

1-2	3-5	6+
\$29.95	\$27.64	\$25.64

DISPOSABLE CANISTERS



1	2	3+
\$79.00	\$72.92	\$67.70

PLD-DC8-2400

4 1/2 x 5 1/8, Fits: Dentply-MVS .75, 1.5, 2.0, 4.0

PLD-DC8-2300

3 1/2 x 4 3/8, Fits: Den-Tai-Ez dual models made after 1978, Dentspy made after 1991, Matrix 1000, 2000 and Drymax

PLD-DC8-2350

3 1/2 x 4 3/8, Fits: Apollo 2 hp, 3 hp, single and tandem models Air Technigues-1997 and later dual models, vacudent-workhorse dual, and newer Vacstar, models. NEW FINER MESH

PLD-DC8-2200

2 3/4 x 3 5/8 Fits: Air Techniques-Vacstar Models, Apollo 1 hp, 1.5 single: Tandem Models, 1, 2 hp Den-Tai-Ez Single Models, Ohmeda-Matrix most models, Turbine Industries, TehcwestVac Models, Vacudent-workhorsesingle, plus other units.

ZIRC LINGUA-FIX 50/PACK



Microban – Antimicrobial additive that is manufactured into the product to help fight bacteria and mold.

Autoclavable – Autoclavable up to 136 degrees Celsius or 270 degrees Fahrenheit

Features:

Provides a dry work area

Holds tongue in a steady position, helps protect the tongue from injuries

- Simple operation, easy to place and remove
- Comfortable, no sharp edges or corners
- Large suction surface avoids blockage
- Reduces sedimentation of drilling by-products in pipes and tubing
- Single use
- Comes pre-assembled
- Dimensions: 5-2/8" x 2-7/8" x 7/16"

ZIR 50Z953 \$41.00

Saliva Ejector Tips

- Push-on or screw-on
- Tips are autoclavable
- Latex-free



PN	DESCRIPTION	PRICE
5754	Push-on Autoclavable, Gray	\$2.80
5750	Push-on Autoclavable, Black	\$2.80
5742	Screw-on Autoclavable Tip, Gray	\$20.56

Saliva Tip Adapter

- Adapts to HVE valve
- Not autoclavable



PN	DESCRIPTION	PRICE
5752	Saliva Ejector Adapter	\$10.00

DEFEND VINYL POLYSILOXANE

Light Body, 4(50ml) HP

MYD-VP9003 Regular Set

MYD-VP9008 Fast Set

Medium Body, 4(50ml) HP

MYD-VP9004 Regular Set

MYD-VP9009 Fast Set

Monophase Body, 4(50ml) HP

MYD-VP9005 Regular Set

MYD-VP9010 Fast Set

Heavy Body, 4(50ml) HP

MYD-VP9007 Regular Set

MYD-VP9011 Fast Set

Putty (2 jars 600ml total)

MYD-VP8006 Regular set

MYD-VP8008 Fast set



HIGH PERFORMANCE TYPE

1 @ \$32.95

1 @ \$49.95

DEFEND BITE REGISTRATION



Mousse-like and Thixotropic, fluffy vinyl polysiloxane material. Used for bite registration, copying transfers, and primary impression with bite trays. Thixotropic material has an excellent durometer of over 80 and flows easily, yet will not run or sag. Our "Hard" Bite material #9010 can be used in conjunction with all "laser" CAD/CAM systems.

Size: 2/pk w/6 Mixing Tips

MYD-BR-9001 Unflavored regular set

MYD-BR-9002 Unflavored fast set

MYD-BR-9003 Unflavored super fast set

MYD-BR-9004 Mint chocolate chip fast set

MYD-BR-9005 Mint Chocolate Chip super fast

MYD-BR-9010 "Hard Bite" Fast set

1	2	3+
\$32.00	\$27.55	\$25.85

DEFEND HIGH PERFORMANCE MIXING TIPS

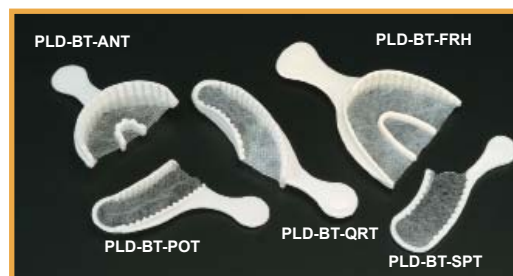
High Performance Mixing Tips for all HP style 50ml impression material cartridges. Tips are color coded according to size. 48/ bag



- MYD-VP8104 Teal
- MYD-VP8105 Yellow
- MYD-VP8106 Pink
- MYD-VP8107 Purple

1	2	3+
\$32.00	\$29.75	\$26.33

PLASDENT MODEL FORMER TRAYS



PLD-BT-ANT Anterior Trays 40 pieces/bx

PLD-BT-POT Posterior Trays 50 pieces/bx

PLD-BT-SPT Sideless Posterior Trays 50 pieces/bx

PLD-BT-QRT Quadrant Trays 50 pieces/bx

PLD-BT-FRH Full Arch Trays 40 pieces/bx

PLD-BT-ASS Assorted Trays 10 pieces of each 1 bx @ \$15.00

PLASDENT IMPRESSION TRAYS

Single Size of 25 Trays 1 @ \$12.00


Single Size of 50 Trays 1 @ \$24.00

Assorted of 48 Trays 1 @ \$25.00


Assorted of 60 Trays 1 @ \$30.00




MICROFLEX TRANQUILITY NITRILE GLOVES

MI TQ-601XS	X-Small	100/box			
MI TQ-601S	Small				
MI TQ-601M	Medium				
MI TQ-601L	Large				
MI TQ-601XL	X-Large				
			1-9	10-19	20+
			\$10.50	\$9.69	\$8.99

ADENNA SILVER LATEX POWDER FREE GLOVES

AD 330	X-Small	100/box			
AD 332	Small				
AD 335	Medium				
AD 336	Large				
AD 338	X-Large				
			1-9	10-19	20+
			\$8.33	\$7.69	\$6.75


MICROFLEX ULTRAFORM NITRILE GLOVES

MI UF-524-XS	X-Small	300/box			
MI UF-524-S	Small				
MI UF-524-M	Medium				
MI UF-524-L	Large				
MI UF-524-XL	X-Large				
			1-9	10-19	20+
			\$32.00	\$29.50	\$22.50


MICROFLEX XCEED NITRILE GLOVES

MI XC-310-XS	X-Small	200/box			
MI XC-310-S	Small				
MI XC-310-M	Medium				
MI XC-310-L	Large				
MI XC-310-XL	X-Large				
			1-9	10-19	20+
			\$17.50	\$16.99	\$15.75


MICROFLEX NEOPRO CHLOROPRENE GLOVES

MI NPG-XS	X-Small	100/box			
MI NPG-S	Small				
MI NPG-M	Medium				
MI NPG-L	Large				
MI NPG-XL	X-Large				
			1-9	10-19	20+
			\$15.90	\$14.68	\$13.99


AURELIA REFRESH PEPPERMINT LATEX POWDER FREE GLOVES

AUR 99225	X-Small	100/box			
AUR 99226	Small				
AUR 99227	Medium				
AUR 99228	Large				
AUR 99229	X-Large				
			1-9	10-19	20+
			\$7.95	\$7.55	\$6.85

MICROFLEX ULTRASENSE NITRILE GLOVES

MI US-220-XS	X-Small	100/box			
MI US-220-S	Small				
MI US-220-M	Medium				
MI US-220-L	Large				
MI US-220-XL	X-Large				
			1-9	10-19	20+
			\$14.31	\$11.97	\$10.25

ADENNA GOLD LATEX POWDER FREE GLOVES

AD 260	X-Small	100/box			
AD 262	Small				
AD 264	Medium				
AD 266	Large				
AD 268	X-Large				
			1-9	10-19	20+
			\$8.33	\$7.69	\$6.75


AURELIA VIBRANT LATEX POWDER FREE GLOVES

AUR 98225	X-Small	100/box			
AUR 98226	Small				
AUR 98227	Medium				
AUR 98228	Large				
AUR 98229	X-Large				
			1-9	10-19	20+
			\$8.17	\$7.54	\$6.31


ADENNA MIRACLE NITRILE GLOVES

AD MIR160	X-Small	200/box			
AD MIR162	Small				
AD MIR165	Medium				
AD MIR166	Large				
AD MIR168	X-Large				
			1-9	10-19	20+
			\$13.50	\$12.99	\$11.50

AURELIA QUEST NITRILE GLOVES

AUR 92896	Small	100/box			
AUR 92897	Medium				
AUR 92898	Large				
			1-9	10-19	20+
			\$7.50	\$6.92	\$5.79

AURELIA VINTAGE LATEX POWDERED GLOVES

AUR 28825	X-Small	100/box			
AUR 28826	Small				
AUR 28827	Medium				
AUR 28828	Large				
AUR 28829	X-Large				
			1-9	10-19	20+
			\$7.17	\$6.62	\$5.54

MEDLINE ALOE TOUCH ICE NITRILE GLOVES

MEDL MDS195283 X-Small

MEDL MDS195284 Small

MEDL MDS195285 Medium

MEDL MDS195286 Large

MEDL MDS195287 X-Large

200/box!!!



	1-4	5-9	10+
	\$15.91	\$14.68	\$13.63

MEDLINE SENSICARE SILK NITRILE GLOVES

MEDL MDS7083 X-Small

MEDL MDS7084 Small

MEDL MDS7085 Medium

MEDL MDS7086 Large

MEDL MDS7087 X-Large

200/box!!!



	1-4	5-9	10+
	\$14.13	\$13.04	\$12.24

MEDLINE SHARPS DISPOSABLES



Opening protects hands from contact with contaminated material. Syringe drop. Lid lock.

MEDL MDS705110 1 Quart 100/Cs 1 @ \$2.25

MEDL MDS705200 1/2 Gal 60/Cs 1 @ \$4.17

MEDL MDS705201 1 Gal 20/Cs 1 @ \$5.25

DEFEND TRAY SLEEVES

These Tray Sleeves cover the entire instrument tray and are made of clear plastic which is easy to apply and easier to dispose of. Available in 2 sizes.

BF-7500 - 11 X 16
500/box

BF-7000 - 10.5 X 14
500/box



1-2	3-4	5+
\$16.95	\$15.46	\$14.53

DEFEND BARRIER FILM

Perforated 4" x 6" sheets are easy to apply, easy to remove and leave no residue.



MYD BF-1500 Clear

MYD BF-2500 Blue

1-2	3-4	5+
\$16.45	\$15.18	\$14.10

ADENNA EARLOOP FACE MASKS

3 ply, Fluid Resistant, latex free. Breathable. Great for sensitive skin.



50/box

AD 110W White

AD 110P Pink

AD 110V Violet

AD 110B Blue

1-9	10-19	20+
\$4.17	\$3.85	\$3.57

DEFEND ULTRASONIC ENZYMATIC TABLETS



These easy-to-use enzymatic tablets dissolve in a gallon of water in under a minute to create a powerful and effective ultrasonic cleaning solution.

MYD UT-1000
64 Tablets/box

1-2	3-4	5+
\$39.95	\$36.85	\$34.24

DEFEND ANTI-FOG EARLOOP FACE MASKS



Blue, 50/box

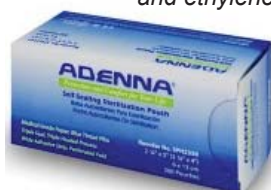
antifog foam nosepiece that absorbs moisture to prevent eyewear from fogging. Constructed of a soft, 3-ply, pleated material for ultimate comfort. The fiberglass-free material combined with a latex-free elastic ear-loop is ideal for those affected by allergies.

MYD MK-1046

1-4	5-9	10+
\$10.25	\$9.46	\$8.78

ADENNA STERILIZATION POUCHES

ADENNA® premium Self-Sealing Sterilization Pouches are designed for use in steam (vapor) and ethylene oxide (ETO) sterilization systems.



AD SPH3510 3.5x10 \$6.75

AD SPH2810 2.75x10 \$5.75

AD SPH3565 3.5x6.5 \$4.99

AD SPH5275 5.25x7.5 \$5.50

METREX METRICIDE 28

MetriCide 28 is a long life, 2.5% buffered glutaraldehyde that can be used and reused as a sterilant and high-level disinfectant for up to 28 days.



MET 10-2800

1-3	4+
\$26.50	\$20.50

METREX DISINFECTING CAVI WIPES

Only cloths able to kill both HBV in 3 minutes and TB in 5 minutes. Can be used on all non-porous surfaces.
12 tubs/case



MET 13-1100 160/wipes
Tub STD

1-11	12+
\$9.48	\$8.35

MET 13-1150 65/wipes
Tub XL

1-11	12+
\$11.34	\$9.72

METREX CAVICIDE DISINFECTING SOLUTION



4 gallons/case

Effective against HBV viruses (hydrophilic and lipophilic), TB, bacteria (including MRSA and VRE), and fungi. Satisfies OSHA's Blood borne Pathogen standards.

MET 13-1000

1-3	4-7	8+
\$25.64	\$23.67	\$21.97

DEFEND FULL CHAIR COVERS



DEFEND Chair Sleeves are made of a clear plastic and are designed to easily fit over most chairs. These disposable chair sleeves are highly durable and easy to use. **125/bx**

MYD BF-4500

1-2	3-4	5+
\$35.00	\$31.75	\$29.99

BRIXTON HALF CHAIR COVERS



1/2 Chair Cover,
Clear
200/bx 15"x23"

FT-505

1	2	3+
\$25.64	\$23.67	\$19.95

MINT A KLEEN WATER LINE CLEANER

Same Formula - Several Uses:

- Dental Unit Waterline Cleaner – Use 4 ounces of Mint-A-Kleen® per operatory once per week.
- Prophy/Contra Angle Prep Care – Use Mint-A-Kleen® prior to sterilization to increase longevity and performance of prophy and contra angles.
- Operative/Scaling Procedures – Use Mint-A-Kleen® solution in coolant line for handpieces and scalars.
- Contains 0.12% chlorhexidine gluconate.



MFC # MAK – OZ
10 - 16 oz. Bottles/cs

MINT-A-KLEEN

1	2	3+
\$115.00	\$101.00	\$99.00

DEFEND SYRINGE SLEEVES

Syringe Sleeves fits most 3-way air/water syringes and have a pre-punched opening making application easy.

550/box



MYD BF-3000

1-3	4-7	8+
\$8.80	\$8.12	\$7.54

MEDLINE EPI-CLENZ HAND SANITIZER



Contains ethyl alcohol and moisturizers to clean hands as it kills most common germs. With Aloe Vera and Vitamin E to soothe the skin. Epi-Clenz® Gel 70% Ethyl Alcohol. 4 oz bottle

MEDL MSC097030

1-9	10-19	20+
\$6.84	\$6.31	\$5.86

STERILIZATION POUCHES WITH BUILT IN INDICATOR



**EVERYDAY
LOW PRICES!**

UNI UPP-223	2-1/4" x 3-3/4"	200/box	30/case	5 + bxs @	\$4.00
UNI UPP-225	2-1/4" x 5"	200/box	16/case	5 + bxs @	\$4.00
UNI UPP-2710	2-3/4" x 10"	200/box	16/case	5 + bxs @	\$5.27
UNI UPP-3565	3-1/2" x 6-1/2"	200/box	16/case	5 + bxs @	\$4.80
UNI UPP-3510	3-1/2" x 10"	200/box	16/case	5 + bxs @	\$5.27
UNI UPP-3212	3-1/4" x 12"	200/box	16/case	5 + bxs @	\$6.80
UNI UPP-4212	4-1/4" x 12"	200/box	12/case	5 + bxs @	\$8.40
UNI UPP-5275	5-1/4" x 7-1/2"	200/box	16/case	5 + bxs @	\$6.80
UNI UPP-5211	5-1/4" x 11"	200/box	12/case	5 + bxs @	\$8.40
UNI UPP-7513	7-1/2" x 14"	200/box	10/case	5 + bxs @	\$19.34
UNI UPP-1015	10" x 16"	200/box	8/case	5 + bxs @	\$29.34

DEFEND ECONOMY PROPHY PASTE

Great flavor in a reduced splatter, consistent formula. Paste contains 1.23% APF with a unique blend of cleaning and polishing agents.

ECONOMY

MYD PP-1000	Coarse Assorted
MYD PP-1100	Coarse Mint
MYD PP-1200	Coarse Cherry
MYD PP-1300	Coarse Van/Orange
MYD PP-1400	Medium Assorted
MYD PP-1500	Medium Mint
MYD PP-1600	Medium Cherry
MYD PP-1700	Medium Van/Orange
MYD PP-1800	Fine Bubble Gum



200/box

PLUS (SPLATTER PROOF)

MYD PP-3000	Coarse Assorted
MYD PP-3100	Coarse Mint
MYD PP-3200	Coarse Cherry
MYD PP-3300	Coarse Van/Orange
MYD PP-3400	Medium Assorted
MYD PP-3500	Medium Mint
MYD PP-3600	Medium Cherry
MYD PP-3700	Medium Van/Orange



200/box

1-4	5-9	10+
\$17.30	\$15.97	\$14.83

1-4	5-9	10+
\$25.70	\$23.72	\$22.02

CROSSTEX SPARKLE V™ 5% SODIUM FLUORIDE VARNISH WITH XYLITOL



Delivers maximum allowable fluoride dosage, with consistent fluoride level in every application. Dries to a natural tooth shade on contact. FDA approved for treating dentinal sensitivity.

120 UNIT DOSES/BOX

CROSS UFVBG Bubblegum
CROSS UFVM Mint

1-4	5-9	10+
\$150.00	\$145.75	\$135.00

CROSSTEX SPARKLE PROPHY ANGLES



CROSS TPASSCI Firm Cup
CROSS TPASFCI Soft Cup

500/Box

1-2	3-4	5+
\$149.00	\$145.00	\$139.00

FLOW X-RAY BITEWING TABS



Self Adhesive in an automatic dispenser box

FLO15720 Stickems adhesive

1-4	5-9	10+
\$9.58	\$8.84	\$8.21

CROSSTEX TWIST PROPHY ANGLES



Features:

- Unique, patented OSCILLATING MOTION
- Eliminates spatter of prophy paste, blood, saliva and other potential infectious matter
- Eliminates frictional heat – remains cool for increased patient comfort

100/bag

CROSS TPAFC Firm Cup
CROSS TPASC Soft Cup

1-2	3-4	5+
\$62.00	\$57.00	\$55.00

DENTAL RESOURCES HINGED FLUORIDE TRAYS



50/pack

DR 9525640	Small
DR 9525830	Small/Medium
DR 9525200	Medium
DR 9524980	Large

1-2	3-4	5+
\$13.15	\$12.14	\$11.27

FLOW DELUXE SAFE' N' SURE ENVELOPES

Protect your investment in digital imaging technology designed to fit all Dentsply, Kodak, Sirona, Air Techniques phosphor plates

FLO 80101 Size 0 PSP 300/Box

FLO 80111 Size 1 PSP 300/Box

FLO 80121 Size 2 PSP 300/Box

FLO 80131 Size 3 PSP 300/Box

1 bx @ **\$40.00**



ALLIED X-RAY DEVELOPER + FIXER



REDI-CHEM (Cs) 4 gallon

ALL27270 2 Developer 2 Fixer

1	2	3+
\$47.08	\$43.25	\$40.35

FLOW ECONO PACK SENSOR SLEEVES

Protect your investment in digital imaging technology designed to fit all Shick, Dentx, Belmont, and more sensors.



FLO 80211	Econo-Pak Large	500/box	1 bx @ \$27.64
FLO 80201	Econo-Pak Medium	500/box	1 bx @ \$17.64

Dental Equipment Sales & Service

ALLSTAR

Local Dental Equipment Repair Service

847-229-9700



Our Service History

Over 20 years ago Allstar started repairing dental office equipment by hiring a staff of fully trained & experienced dental repair professionals. Since then, we added high quality brand named equipment including: Belmont, Scican, Tuttnauer, and Midmark making Allstar one of the most unique, personalized, and reliable full service dental supply and repair companies offered for dental offices.

WE REPAIR

- **Lights**
- **Chairs**
- **Delivery Units**
- **Compressors**
- **Vacuum Pumps**
- **Sterilizers**
- **Film Processors**
- **Scalers**
- **Cavitrons**
- **Amalgamators**
- **Curing Lights**
- **All Tubing**
- **Fiber Optics & Tubing**
- **X-ray Equipment**
- **Handpieces**
- **Ultrasonic Cleaners**
- **Handpieces**

What Makes Us Different?

Allstar Dental Inc. finds solutions to dental office problems. We will not sell you equipment you do not need. Our first priority is always to keep your existing equipment running like new!

What do We Warranty & Repair?

Allstar Dental Inc. honors all manufacturer's warranties for the equipment we sell. Chicago land customers also benefit with a limited labor warranty. Unlike other companies, Allstar can service your equipment and keep your office running without the complications of buying equipment from single service online dealers. Our full-service equipment sales and repair specialists can help you find the right equipment that will make your office more efficient and give you a headache free experience. Please call and find out if your office qualifies for free installation.

Allstar Dental Inc
163 Wheeling Rd.
Wheeling, IL 60090

WWW.SHOPALLSTARDENTAL.COM