

WE ARE A FULL-SERVICE DENTAL DEALER



10% OFF

use code: **DENTFULL**

your next online order (1 per customer)

ALLSTAR DENTAL ACCESSORIES

HANDPIECE REPAIR



STEP 1: CREATE AN ACCOUNT ONLINE.
STEP 2: GIVE US A CALL AND WE CAN EMAIL YOU A **FREE USPS RETURN LABEL**



Take 15% OFF with code: **RECYCLENOW**
Discounts Only Available Online

NXT Hg5 Collection Container (Recycle Kit)
NXT-HG5-002CR



midmark®
GENUINE
STERILIZER GASKETS

CELEBRATING
30
YEARS!
OF
DENTAL
SERVICE



CALL US TODAY: 847-229-9700 | WWW.ALLSTARDENTALSUPPLY.COM



PRICES AVAILABLE ONLINE

CALL FOR A COMPETITIVE PRICE ON ALL STERILIZATION EQUIPMENT 847-229-9700



TUTTNAUER EZ9 & EZ10



TUTTNAUER 3870



Coltene BioSonic® UC150



MIDMARK M3



MIDMARK M9 & M11



L&R RECESSED ULTRASONIC
Recessed Systems with digital touch pad controls easily install into existing countertops and work areas to save valuable workspace.



TUTTNAUER STERILIZER GASKET

3242105: Tuttnauer 1730

3242106: Tuttnauer
2340 & EZ 9

3242107: Tuttnauer
2540 & EZ 10



002-0504-00: M11 Kit

053-0527-00: M11 Gasket

002-0361-01: M9 Kit

053-0366-00: M9 Gasket



BRANDMAX ULTRASONIC

All Tri-Clean ultrasonic units come standard with heating element, cycle time controller and stainless steel basket

U-3LH: 1 Gallon w/ Heat
U-10LH: 3 Gallon w/ Heat



TUTTNAUER CHAMBER BRITE

Chamber Brite Autoclave Cleaner , box of 10 packages.

TUTT CB0010



MIDMARK
SPEED-CLEAN

16 oz Bottle
002-0396-00:



2-Pack
**2320: Midmark
Chamber Screen**



MIDMARK QUICKCLEAN

Providing powerful, effective cleaning and consistent results, the QuickClean Ultrasonic Cleaner is a piece of equipment your dental office can't be without.



SCICAN STERILIZER GASKET

SCI 01-100028S: Statim 2000

SCI 01-101649S: Statim 5000



SCICAN HEPA FILTER

Biological Filter for Statim 2000 and 5000

01-102119S



TUTTNAUER WATER DISTILLER

Comes in multiple sizes

Call for details

9000: 1 Gallon

7000: 3 Gallon



WE REPAIR HANDPIECES & CAVITRONS ALL OVER THE COUNTRY

STEP 1: CREATE AN ACCOUNT ONLINE. STEP 2: GIVE US A CALL AND WE CAN SEND YOU A FREE USPS RETURN LABEL





Midmark PowerAir
The Midmark Classic PowerAir® Oil-less Dental Air Compressors bring together the best features and most proven oil-less compressor head technologies into one powerful offering. PowerAir® oil-less compressors satisfy the high standards demanded by today's dental professionals.

CONTROL PANELS

- 2900:** Single Switch
- 2901:** Dual Switch
- 2902:** Triple Switch
- 2904:** Quad Switch Panel
- 2723:** Remote 24 Volt Red LED Switch



2826 : PRESSURE GAUGE



STERILIZERS & ACCESS. 2

COMPRESSOR PARTS & ACCESSORIES 3

VACUUM SUPPLIES & ACCESSORIES 4-5



- BUCK & BOOST TRANSFORMERS**
- 2972:** Single Phase 3500 VA, 120/240V-12/24, 50/60 Hz
 - 2970:** Single Phase 5000 VA, 120/240V-12/24, 50/60 Hz
 - 2971:** Single Phase 7500 VA, 120/240V-12/24, 50/60 Hz

COOLING FANS

- 2696:** 115 Volt Fan
- 2540 :** 220 Volt Fan



- COMPRESSOR OIL**
- 2885:** 1 16oz bottle
 - 2647:** 6 case



OPERATORY EQUIPMENT 6

OPERATORY ACCESSORIES 7



2857: Compressor Hook Up Hose

- SYNTHETIC COMPRESSOR OIL**
- 2945:** 24oz bottle



HANDPIECES & ACCESSORIES 8

LIGHT PARTS 9

PRESSURE SWITCHES

- 2417:** Unloading for MDT, Apollo, Midmark, Compressors



- 2005 :** Non-Unloading for Tech-West DCI Compressors



- AIR TECHNIQUES DRYING CHAMBER PURGE VALVE**
- 2940:** 230 Volt OEM 85946



- TIME OPERATED PURGE VALVE**
- 2848:** 115 Volt,

DIGITAL EQUIPMENT 9

OFFICE ORGANIZERS 10-17

NITROUS 18-19



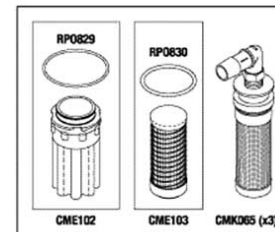
- DENTALEZ COALESCING FILTER**
- 2935:** OEM JA081602

- DENTALEZ INTAKE FILTER**
- 2932:** OEM 5412210



- MIDMARK EXHAUST SILENCER**
- 6298330:** P21, P22, P32, P52

- MIDMARK MAINTENANCE KITS**
- 77000959:** P21, P22
 - 77001636:** P32
 - 77001610:** P52
 - 77001611:** P72



- AIR TECHNIQUES COMPRESSOR MAINTENANCE KITS**

- CMK142:** KIT FOR AIRSTAR 20
- CMK143:** KIT FOR AIRSTAR 30

INFECTION CONTROL & DISPOSABLES 20-25

HYGIENE EQUIPMENT & SUPPLY 26-28

IMPRESSION 29

LAB 30

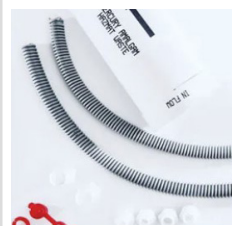
STOOLS 31



Take %15 OFF
with code:
RECYCLENOW
Discounts Only
Available Online



NXT Hg5 Collection Container
(Recycle Kit)
NXT-HG5-002CR



THE SIMPLEONE
Chairside Amalgam
Separator

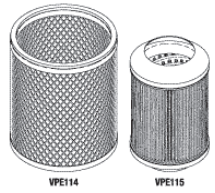
HIGH VOLUME COMBO TIPS
VE-1121: WHITE, 100/BAG,
NON VENTED HIGH VOLUME TIPS
BAN 9304: WHITE, 100/BAG



SURGICAL ASPIRATOR TIPS
Autoclavable and made of durable, high quality
polyethylene with a 30° angle. 25/BAG



ZSABL: BLUE, SMALL TIP - 1/16"/0.16CM
ZSAWH: WHITE, STANDARD TIP -
1/8"/0.32CM
ZSAGR: GREEN, LARGE TIP - 1/4"/0.64CMS



Maintenance Kit,
includes 2 Air
Filters and 1 Oil
Filter
DENTALEZ
003740

RPI VPK113



Vacuum Pump
Oil for use with
RAMVAC, 1
Quart **2155**



2833: Vacuum Breaker, 1/4" NPT
2834: Vacuum Breaker, 3/8" NPT



8048A: Plasdent TRK-O-VAC
Disposable Oral Evacuator
Tips Plastic Blue 25/Pk



ZIRC MR THIRSTY EVACUATION SYSTEM
50Z989MD-B: Mr. Thirsty One-Step Medium
(100pk)
50Z986LG-B: Mr. Thirsty One-Step Large
(100pk)
50Z992: Mr. Thirsty Comfort Kit



Cogged-Type
Belt to fit RAM-
VAC Pumps

PLASDENT VACUUM CANISTERS



PLD-DC8-2400
4 1/2 x 5 1/8, Fits: Dentsply-MVS .75,
1.5, 2.0, 4.0

PLD-DC8-2300
3 1/2 x 4 3/8, Fits: Den-Tai-Ez dual
models made after 1978, Dentsply
made after 1991, Matrix 1000, 2000
and Drymax

PLD-DC8-2350
3 1/2 x 4 3/8, Fits: Apollo 2 hop, 3
hp, single and tandem models Air
Techniques-1997 and later dual
models, vacudent-workhorse
dual, and newer Vacstar, models.
NEW FINER MESH

PLD-DC8-2200
2 3/4 x 3 5/8 Fits: Air Techniques-
Vacstar Models, Apollo 1 hp, 1.5
single: Tandem Models, 1, 2 hp Den-
Tai-Ez Single Models,
Ohmeda-Matrix most models, Turbine
Industries, TehcwestVac
Models, Vacudent-workhorse single,
plus other units.



MIDMARK PRECISION PLUS
EVACUATION CLEANER
64 oz,
77000570



MONARD CLEANSTREAM EVACUATION
CLEANER

The unique formulation is designed for daily
cleaning, penetrates, and helps remove line build-
up while improving suction performance.

H3640:
57660: Dispensing Bottle



SALIVA EJECTOR
TRAPS
72/BAG
PLD-8100



ZIRC LINGUA FIX - 50/box
Microban – Antimicrobial
additive that is manufactured
into the product to help fight
bacteria and mold.
50Z953



POWERVAC® DRY VACUUMS
The first dry vacuum to combi-
ne the advanced features
your dental practice demands
into one flexible, perfor-
mance-driven system. The
PowerVac creates a new stan-
dard for dental dry vacuums
with exceptional power and
performance.





SALIVA EJECTOR VALVES



HIGH VOLUME VALVES

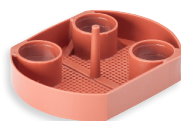


- 5650** - Standard Autoclavable Saliva Ejector w/Quick Disconnect & Threaded Tip
- 5660** - Standard Autoclavable Saliva Ejector w/Quick Disconnect & Push On Tip
- 5222** - Precision Comfort Premium SE w/ Flush Top & Swivel
- 5218** - Precision Comfort Premium SE Lever
- 5754** -Saliva Ejector Tip Push-on Autoclavable, Gray
- 5681** - Cattani SE QD Swivel, 20mm Swivel, 11mm Barb
- 5217** - Autoclavable Saliva Ejectors 3/16" Quick Disconnect Swivel w/ O-ring
- 5670** - Standard Autoclavable Saliva Ejector Lever
- 5088** - Standard Autoclavable SE w/Quick Disconnect & Threaded Tip
- 5169** - Autoclavable Saliva Ejector Lever & Spool Assembly
- 5742** - Screw-on Autoclavable Tip, Gray

- 5112** - Premium Autoclavable Extended HVE Valve
- 5108** - Premium HVE Lever
- Vacuum Valves w/Quick Disconnect
- 5148** - Autoclavable Short Vacuum Valve w/Quick Disconnect
- 5131** - Comfort Short Premium HVE w/ Flush Top & Swivel
- 5070** - Autoclavable Extended Vacuum Valves w/QD
- 5070** - Autoclavable Extended Vacuum Valves w/QD
- 5220** - A-dec HVE QD Swivel
- 5680** - Cattani HVE QD Swivel, 26mm Swivel, 11mm Barb
- 5684** - Durr HVE QD Swivel, 28mm Swivel, 22mm Barb
- 5683** - Siemens HVE QD, 19mm Swivel, 15mm Barb



Disposable Screen, to fit A-dec Cascade Solids Collector, Pkg of 144
6818



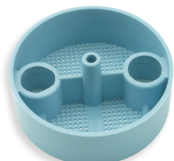
Solids Collector Disposable Screen Pelton & Crane Spirit, Pkg of 144
6821



Solids Collector Covered Disposable Screen, 1 7/8"; Pkg of 100
5832



Solids Collector Disposable Screen, 1 7/8"; Pkg of 100
5818



Solids Collector Disposable Screen, 2 1/8"; Pkg of 100
5817



VACUUM CANISTER Bottom Port w/Bracket.
5873



VACUUM CANISTER Side Port w/Bracket.
5872



DRY ORAL CUP Autoclavable
5840
PAPER INSERTS
1000/Bag
5845

STERILIZERS & ACCESS. 2

COMPRESSOR PARTS & ACCESSORIES 3

VACUUM SUPPLIES & ACCESSORIES 4-5

OPERATORY EQUIPMENT 6

OPERATORY ACCESSORIES 7

HANDPIECES & ACCESSORIES 8

LIGHT PARTS 9

DIGITAL EQUIPMENT 9

OFFICE ORGANIZERS 10-17

NITROUS 18-19

INFECTION CONTROL & DISPOSABLES 20-25

HYGIENE EQUIPMENT & SUPPLY 26-28

IMPRESSION 29

LAB 30

STOOLS 31







Quick-Clean Standard Air & Water Syringe
3430

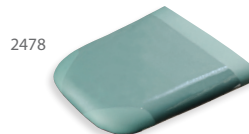
3085: Syringe Button Cartridge & Conical Spring
3066: Syringe Repair Kit



Autoclavable Syringe Tips
5/pack
3061: \$23.50
50/pack
3059

Seat Cushion Feet Protectors

Plastic cover for toe portion of seat cushion



- 2478:** MDT Champagne 1000
- 2801:** Healthco Celebrity
- 2802:** Belmont Bel 10
- 2803:** Marus® DC1690 & DC1535
- 2804:** Royal Model 16
- 2805:** A-dec® Model 1021
- 2806:** A-dec® Model 1040
- 2807:** Pelton & Crane® Coachman I & II
- 2808:** Pelton & Crane® Chairman
- 2809:** Pelton & Crane® Chairman 5000



Water Bottles
1 Liter
2 Liter 8164



Quick-Switch Water Bottle System
8941: Kit
8943: Bottle Adapter
8942: Unit Adapter



Crosstex DentaPure waterline cartridges take the guesswork out of providing clean, safe dental water.

DP365D: Stick for Water Bottle
DP365M: City Water Cartridge



Foot Control Wet/Dry, Choose Color of Tubing
6310

Foot Control Wet/Dry & Chip Blower, Choose Color of Tubing, with Relay
6415



WATER LINE CLEANER
Sterilex Liquid Ultra Solutions I & II was specifically developed to penetrate and remove biofilms, kill biofilm bacteria, and disinfect interior surfaces in dental unit waterlines.
DS503L

DCI Hydraulic Oil

- 10 wt Hydraulic Oil
- For use on all Hydraulic Chairs
- 1 Pint

PN	DESCRIPTION
2691	Hydraulic Oil, (MDT #A063762)



X-Ray Exposure Switch Kits

Economy X-Ray Exposure Switch & Plate
7116

Flush Mount X-Ray Exposure Switch & Plate
P-1042



Iodine Test Strips (Box of 50)
DPTES



ZIRC EZ SHELF
Provides easy to access work space for auxiliar items, E-Z mounting to standard equipment post (1-3/4" - 2-1/4"), no tools needed.
20Z420I-X

STERILIZERS & ACCESS.
2

COMPRESSOR PARTS & ACCESSORIES
3

VACUUM SUPPLIES & ACCESSORIES
4-5

OPERATORY EQUIPMENT
6

OPERATORY ACCESSORIES
7

HANDPIECES & ACCESSORIES
8

LIGHT PARTS
9

DIGITAL EQUIPMENT
9

OFFICE ORGANIZERS
10-17

NITROUS
18-19

INFECTION CONTROL & DISPOSABLES
20-25

HYGIENE EQUIPMENT & SUPPLY
26-28

IMPRESSION
29

LAB
30

STOOLS
31



HIGHSPEED HANDPIECE	HIGHSPEED SWIVEL	REPLACEMENT BULB
---------------------	------------------	------------------



fits KaVo - Ultra-Access Head (small head) w/light, **Vx9-SLK**
 fits KaVo - High-Torque Head(large head) w/light, **Vx10-SLK**



6 Pin Swivel Connector (ISO-C) Multiflex™ Type
LED # VKS6LE



5 hole fiberoptic swivel.
Halogen # VKS5



LED Diode 6 pin upgrade kit with Cap for Vector (VKS6) & KaVo Swivel (465LRN, 460LE, 459AN) Couplers.
VKLE-01



fits NSK - Ultra-Access Head (small head) w/light, **Vx9-SLN**
 fits NSK - High-Torque Head(large head) w/light, **Vx10-SLN**



6 Pin Optic to fit NSK
Halogen VNS6



LED Diode for NSK 6 Pin Coupler.
VNL



fits A-dec W&H - Ultra-Access Head (small head) w/light, **Vx9-SLK**
 fits Ad-ec W&H - High-Torque Head(large head) w/light, **Vx10-SLK**



6 Pin Electric to fit ADEC/ W&H
Halogen VWS6



LED Bulb fits all ADEC/ W&H Highspeeds
VWHL



LED for Bien-Air/ Midwest Couplers
VBAKL



LED Diode for Sirona coupler cap
VSBL



LED Diode for StarDental 6 Pin Coupler
VSTL



LED Diode for KaVo Electric Motors
VKML



LED Diode for Bien Air Electric Motor.
VBAL



LED for Sirona Motors
VSGL

**COMES WITH-
 FREE
 HANDPIECE!**



MORITA LUBRINA
 Lubrina cleans and purges handpieces, and a variety of other equipment, via a rapid air blow system. 25 seconds per handpiece. **CALL FOR PRICE**



VECTOR COMPLETE SLOWSPEED SET
 Set Includes: Motor, Straight Nose and Angle
 6 month limited warranty on Nose Cone and Contra Angle, 90 day limited warranty on Angle heads
TT-20K



HANPIECE GASKETS
0122: 3-Hole Borden
0123: 4-Hole Midwes
0124: 5-Hole Midwest
4710: 6-Pin for 8813 Lamp Module
4711: 5-Hole Star



VECTOR LUBRICANT SPRAY
 The white cap on the top of the can is included with each can. Remove this cap to use VECTOR SPRAY with your genuine KaVo spray adapters. **VL-S**



LED 5-Hole Lamp Module (Current DCI Hoses)
9603



VECTOR MICRO LITE MINI PROPHY SLOWSPEED
 5,000 rpm prophy handpiece. Made in USA, 1 year warranty
ML500





Belmont Clesta Light Bulb, 24 Volt / 60 Watt Black Tip, Fits all Belmont Clesta Lights (Belmont 501074) **8890**



Belmont Clesta Light Shield **8959**



A-dec® Cascade "6300" Bulb 17 Volt / 95 watt
• Fits Cascade "6300" lights **9364**



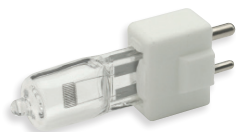
A-dec® Performer / Ampco Contender, Fiad / Healthco / SDS Fantastic Belmont / Celux / Chayes Virginia, DCI Equipment Pro 70 / Marus® Pro 72 12 Volt, 55 Watt, **8688**



DCI Light Shield for A-dec **9390**



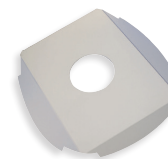
Midmark Reflector Shield Assembly Kit **002-10072-00**



Marus & Ritter® Bulb 24 Volt AC / 150 watt **8687**



Pelton & Crane® LF+ / LF I / LF II / LF III, 24 Volt AC / 150 watt **8683**



Marus & Ritter® Lens Shield **8602**



Pelton® LF II Lens Shield **8601**
Pelton® LF I Lens Shield **8600**



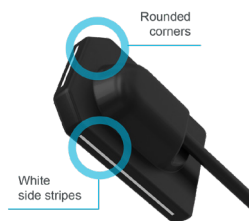
DIGITAL IMAGING



X-MIND® prime 3D
Easy acquisition. Effective workflow.
X-MIND® prime 3D is a new generation CBCT all-in-one dental unit. It is featuring stylish and smooth design underlying a cutting-edge technology. With X-MIND® prime 3D you will take advance from a streamlined acquisition workflow.



MORITA Veraview X800
has redefined top-class X-ray combination systems. Outstanding image quality for panoramic, 3D, and cephalometric images ensures a precise and reliable diagnosis even in the most demanding cases.



Acteon Sopro Sensors
The Automatic Control Exposure® technology analyses in real-time the amount of X-rays accumulated by the sensor. Analyses in real-time. It freezes the image acquisition as soon as the sensor receives the radiation dose to produce an optimal

Acteon SOPRO 617®
offers a 105° view and it's equipped with technology which avoids distortion for a great depth of field. It will enable you to improve exploration of the distal areas and closely monitor micro fractures and the development of small lesions.



Acteon X-MIND® prime Ceph
Easy acquisition. Effective workflow.

The ergonomics of the teleradiography head support, with integrated reference mark of the Frankfurt plan, optimizes patient's comfort and stability, reducing the risk of retakes because of motion artifacts.

Strong hardware. Smart software. Fast diagnostic.



ACTEON PSPIX® 2 Phosphor plate scanner

The Automatic Control Exposure® technology analyses in real-time the amount of X-rays accumulated by the sensor. Analyses in real-time. It freezes the image acquisition as soon as the sensor receives the radiation dose to produce an optimal image.

STERILIZERS & ACCESS. **2**

COMPRESSOR PARTS & ACCESSORIES **3**

VACUUM SUPPLIES & ACCESSORIES **4-5**

OPERATORY EQUIPMENT **6**

OPERATORY ACCESSORIES **7**

HANDPIECES & ACCESSORIES **8**

LIGHT PARTS **9**

DIGITAL EQUIPMENT **9**

OFFICE ORGANIZERS **10-17**

NITROUS **18-19**

INFECTION CONTROL & DISPOSABLES **20-25**

HYGIENE EQUIPMENT & SUPPLY **26-28**

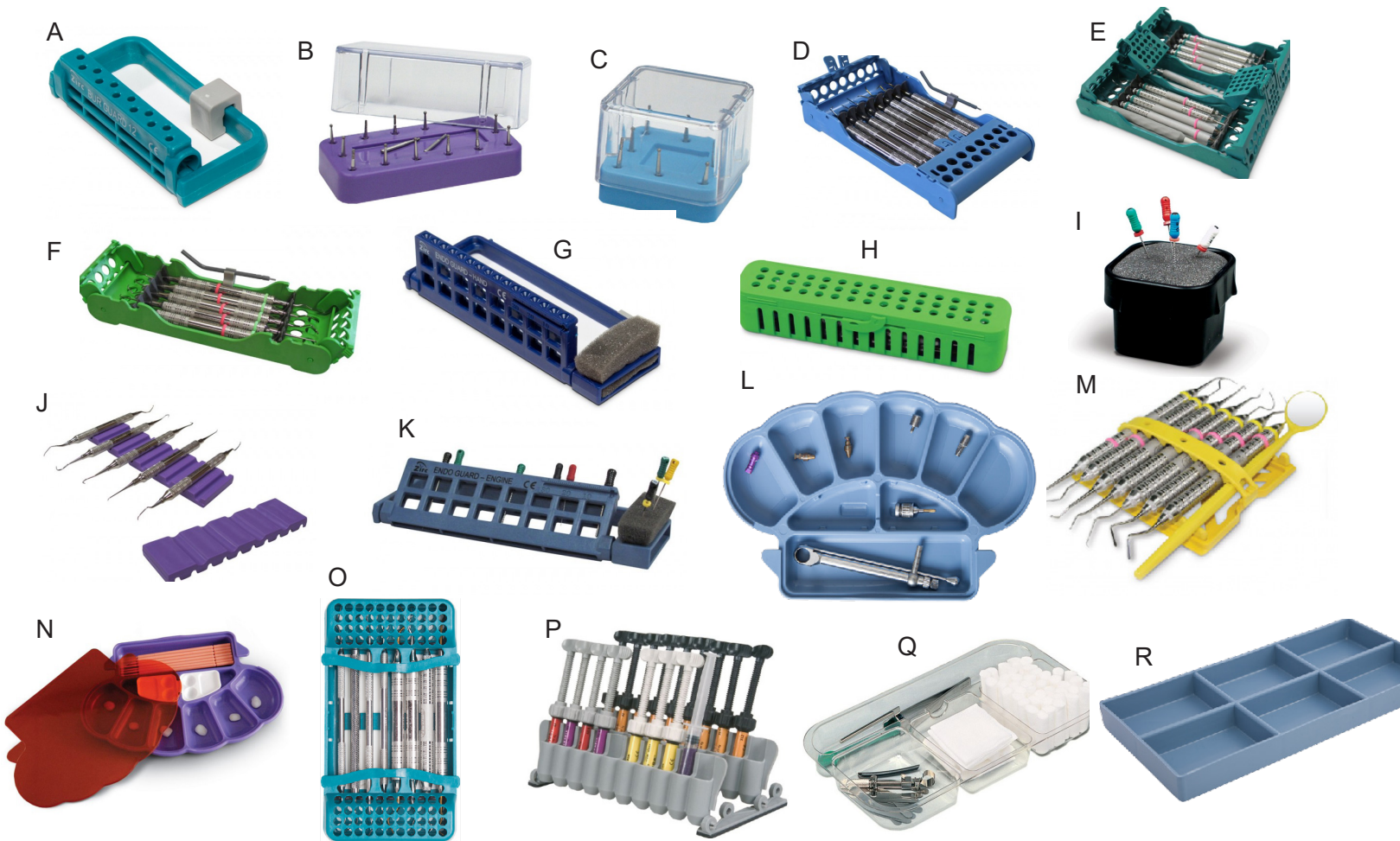
IMPRESSION **29**

LAB **30**

STOOLS **31**



www.allstardentalsupply.com

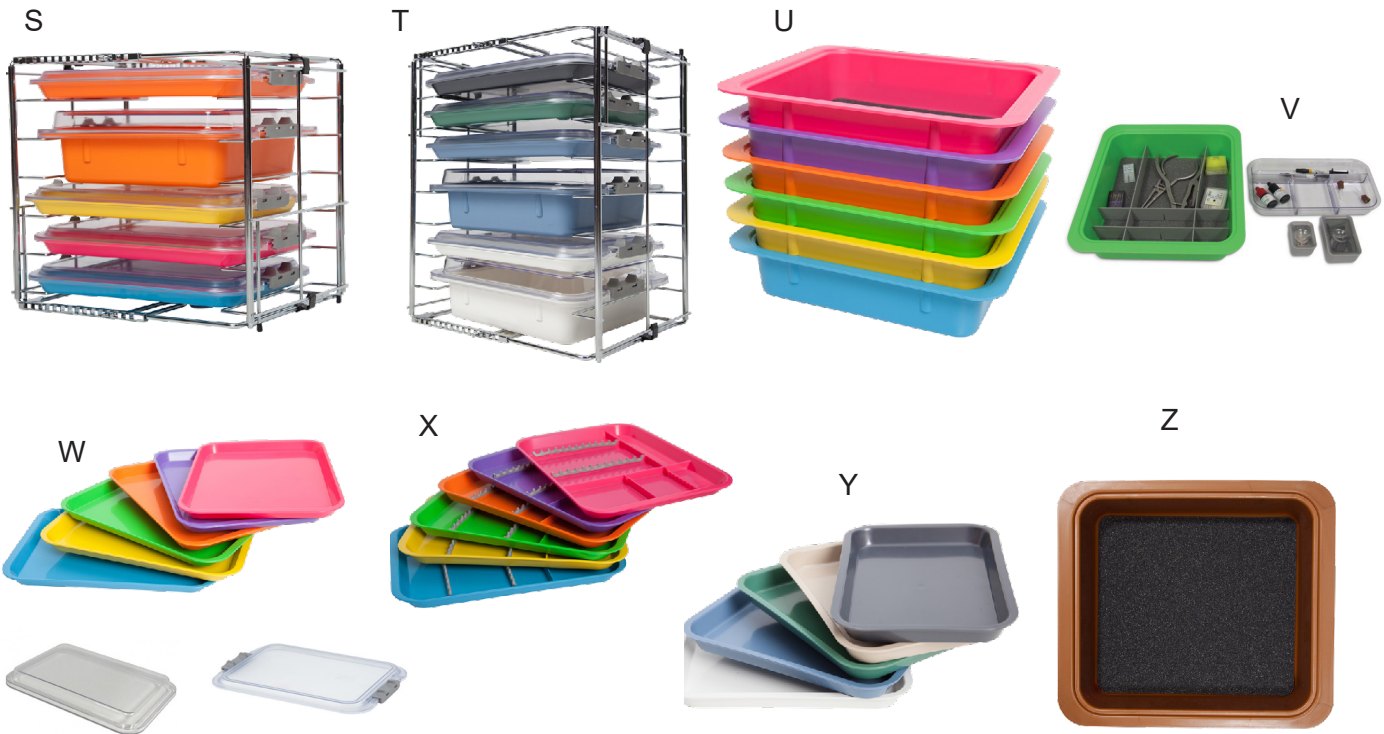


- A. **50Z406** - 12 Hole Bur Guard
- B. **50Z403** - 14-Hole Magnetic Bur Blocks
- C. **50Z400** - 8-Hole Magnetic Bur Blocks:
- D. **50Z927** - E-Z Jett Cassette 8-Place
- E. **50Z930** - E-Z Jett Cassette 10-Place
- F. **50Z925** - E-Z Jett Cassette 5-Place
- G. **50Z450** - Steri-Endo Guard Hand
- H. **50Z905** - Compact Steri Container
- I. **50Z462** - Endo Assist Black

- J. **20Z464** - Instrument Ma
- K. **50Z452** - Endo Guard Engine
- L. **20Z490B** - Implant Organizer
- M. **20Z480** - Mini Mat
- N. **20Z495R** - Restorative Organizer
- O. **50Z911** - E-Z Jett Cass. Slim 8-Place
- P. **20Z487** - 20 Unit Syringe Stand
- Q. **20Z466** - Slide Tray Divided
- R. **20Z206** - Cab Tray

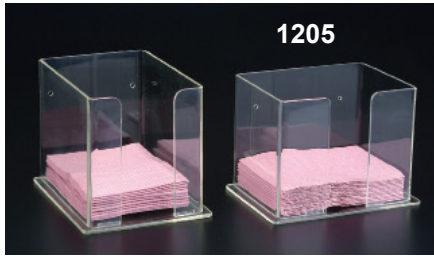


www.allstardentalsupply.com



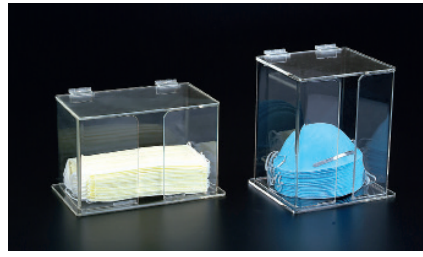
S. **21Z105** - Multi-Mod Rack (6-Place)
 T. **21Z410** - Multi-Mod Rack (8-Place)
 U. **20Z463** - Procedure Tub
 20Z459 - Safe-Lok Tub Cover
 V. **20Z455** - Complete Tub Kit

W. **20Z401** - Size B Trays
 20Z441 - No Lock Tray Cover
 20Z445 - Locking Tray Cover
 X. **20Z451** - B-Lok Divided Tray
 Y. **20Z101** - Mini Tray
 Z. **50Z927** - Non-Slip Procedure Tub Liner



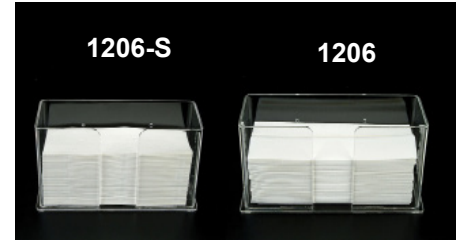
1205: Long Side Loading
(5 5/8"W x 7 1/2"H x 6 1/4" D)

1204: Short Side Loading
(5"W x 6"H x 7"D)



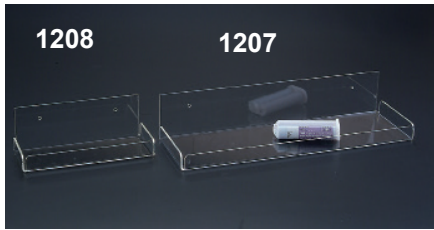
1211: Molded Mask Organizer
(6 1/2"W x 7 1/4"H x 5" 5/8D)

1212: Earloop Mask Organizer
(8 1/2"W x 5 1/4"H x 5"D)



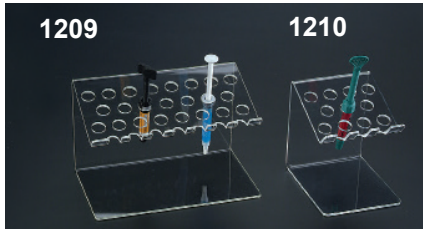
1206: C-FOLD Towel Holder
(11 7/8"W x 5 3/4"H x 4 1/4"D)

1206-S: MULTI-FOLD Towel Holder
(10 1/2"W x 5 3/4"H x 4 1/4"D)



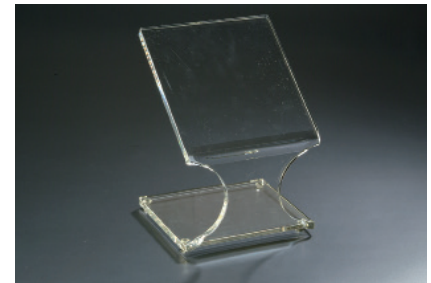
1207: Large Wall Organizer
(16 1/4"W x 3"H x 5 1/4"D)

1208: Small Wall Organizer
(8 1/4"W x 3"H x 3 1/2"D)



1209: Large Composite Organizer
(8"W x 5 1/8"H x 4 1/4"D)

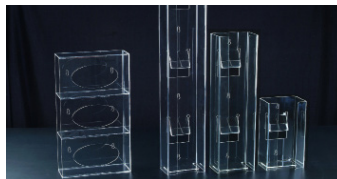
1210: Small Composite Organizer
(4"W x 5 1/8"H x 4 1/4"D)



1401: Splash Shield
(7 1/4"W x 9 1/4"H x 6 1/2"D)



1202: Acrylic Cup Holder For 5oz Cup, 2 1/2" Dia. x 9 1/2"H



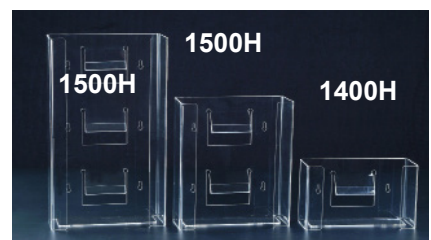
Glove Dispensers

1400: Single Vertical
(5 3/4"W x 10" H x 3 7/8" D)

1500: Double Vertical
(5 3/4"W x 20" H x 3 7/8" D)

1600: Triple Vertical
(5 3/4"W x 30" H x 3 7/8" D)

1600HSD: Side Loading Triple
(10" W x 17 1/4" H x 3 7/8" D)

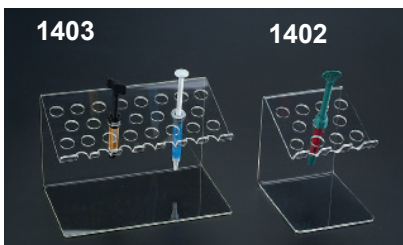


Glove Dispensers

1400H: Single Horizontal
(10" W x 5 3/4" H x 3 7/8" D)

1500H: Double Horizontal
(10" W x 11 3/8" H x 3 7/8" D)

1600H: Triple Horizontal
(10" W x 17" H x 3 7/8" D)



Premium Composite Syringe Organizer

1402: (7 1/2"W x 5 1/2"H x 4 1/2"D)

1403: Mini (4 3/8"W x 5 1/2"H x 4 1/2"D)



1209: Large Composite Organizer
(8"W x 5 1/8"H x 4 1/4"D)

1210: Large Composite Organizer
(4"W x 5 1/8"H x 4 1/4"D)

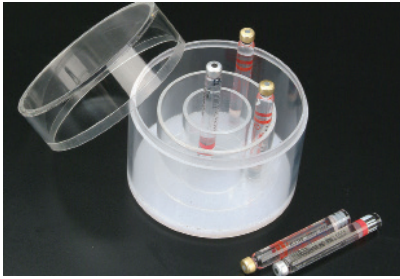


ULTRAVIOLET COVERS

1404-M: (7 1/2"L x 4 1/2"W x 1 1/2"H)

1404-S: (3 1/4"L x 3"W x 1"H)





1410:
ANESTHETIC CARTRIDGES
HOLDER
Holds: 50, 1.8 ml Anesthetic
Cartridges



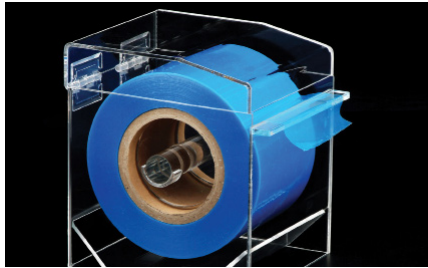
1411: IMPRESSION ORGANIZER
(12 1/4"W x 9 1/2"H x 6"D)



1412:
ADJUSTABLE COMPARTMENT
ORGANIZER
(12" W x 11 3/4"H x 7 1/8"D)



1413: ORGANIZATION STATION
(14" W x 11" H x 7 1/4" D)



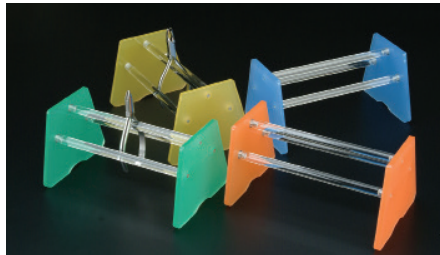
1415: STICKY WRAP DISPENSER
Note: Core of Wrap needs 2 7/8" or
bigger to fit the Dispenser
(5 1/2"W x 7 1/8"H x 6 1/4"D)



1004N: NEW ROUND PLIER RACK
4"Dia. x 5 1/2"Dia. Base x 4 1/4"H
Color: Blue, Yellow, Green, Orange



1009N: NEW UPRIGHT PLIER RACK
(12"W x 5 1/2"H x 4"D)
Color: Blue, Yellow, Green, Orange

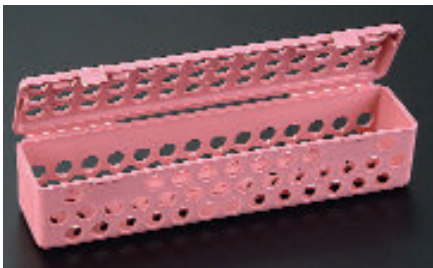


1011N: NEW SINGLE
STRAIGHT PLIER RACK
(8 3/4"W x 4 1/2"H x 5 1/4"D)
Color: Blue, Yellow, Green, Orange



2021GL: LARGE SILICONE
INSTRUMENT GRIPS
For #6 Handle
2021GS:
SILICONE INSTRUMENT GRIPS For #2
& #4 Handle Heat Sterilize Up To 375F
Color: White, Blue, Yellow,
Green, Red, Purple, Mauve
and Assorted
20pcs/bag Single Color

24pcs/bag Assorted Colors



203SC:
INSTRUMENT STERI CONTAINER
(8" x 1 3/4" x 1 3/4")
Autoclavable to 2500F



208BTB:
BURS TUB
Beige color only

STERILIZERS
& ACCESS.
2

COMPRESSOR
PARTS &
ACCESSORIES
3

VACUUM
SUPPLIES &
ACCESSORIES
4-5

OPERATORY
EQUIPMENT
6

OPERATORY
ACCESSORIES
7

HANDPIECES &
ACCESSORIES
8

LIGHT PARTS
9

DIGITAL
EQUIPMENT
9

OFFICE
ORGANIZERS
10-17

NITROUS
18-19

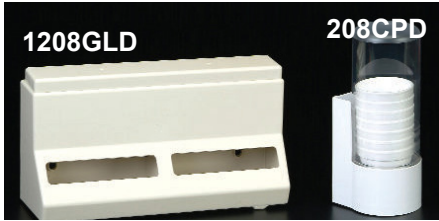
INFECTION
CONTROL
& DISPOSABLES
20-25

HYGIENE
EQUIPMENT &
SUPPLY
26-28

IMPRESSION
29

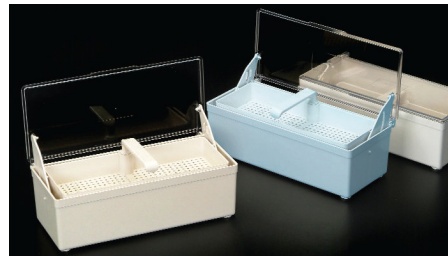
LAB
30

STOOLS
31



1208GLD
208CPD

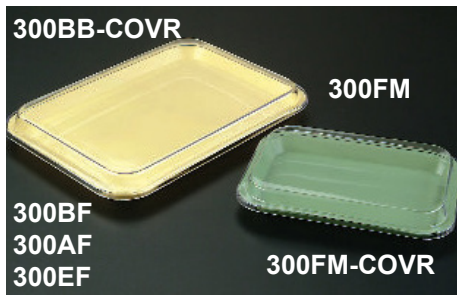
208CPD: CUP DISPENSER WALL MOUNT
 White and Beige, for 5oz Cups
208GLD:
 GLOVE DISPENSER BULK LOAD
 White and Beige, Wall Mount or Desk Top



GERMICIDE TRAY
 (10 3/8"W x 3 1/4"H x 4"D)
208GST-7: Beige with Clear Lid
208GST-2: Blue with Clear Lid
208GST-1: White with Clear Lid



300DF: FLAT TRAYS SIZE D
 Blue or White
 (A-Den-Tal-Ez)
 (12 3/8" x 7 3/4" x 3/4")



300BB-COVR: SIZE B TRAY LIDS

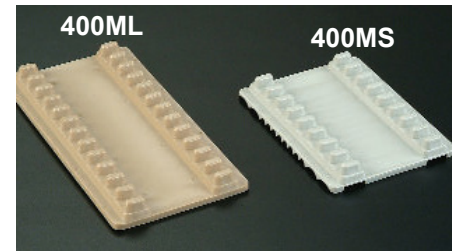
300BF: (13 1/2"x9 5/8"x7/8")
 FLAT TRAY SIZE B (Ritter)
300AF: (13 3/4"x10 5/8"x7/8")
 FLAT TRAY SIZE A (Chayes)
300EF: (15"x10 1/2"x7/8")
 FLAT TRAY SIZE E (Midwest)

300FM-COVR: SIZE F TRAY LIDS

300FM: (9 5/8"x6 5/8"x7/8")
 FLAT TRAY SIZE F (MINI)

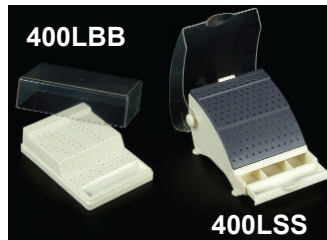


DIVIDED TRAY
300BD: SIZE B
 (Ritter) (13 1/2"x9 5/8"x7/8")
300AD: SIZE A (Chayes)
 (13 3/4"x10 5/8"x7/8")
300ED: SIZE E
 (Midwest) (15"x10 1/2"x7/8")
\$8.99 ea



400ML: LARGE INSTRUMENT MAT
 Capacity: 12, Dimension (7 1/2" x 4")

400MS: SMALL INSTRUMENT MAT,
 Reversible Capacity: 8 or 12
 Dimension (5 3/16" x 4 1/8") Color: S



400LBB

400LSS

BLOCK w/LID
400LBB: Ivory, 144FG/RA & 24FG
LARGE BURSTATION w/LID
400LSS: Ivory, 87FG/RA & 55FG



Size B Tray
 Ritter
 (13 1/2"x9 5/8"x7/8")
300BFS:

CHECK ONLINE FOR ALL COLORS!



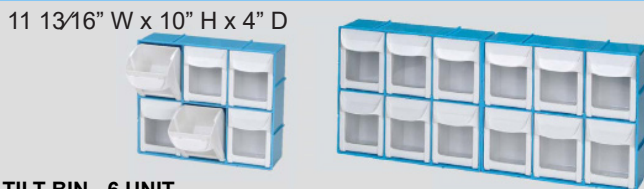
11 13/16" W x 8" H x 3 3/8" D

TILT BIN - 8 UNIT
BIN08-11: Black Frame/ Grey Bins
BIN08-4N: Neon Green Frame/ White Bins
BIN08-2N: Neon Blue Frame/ White Bins
BIN08-6N: Neon Pink Frame/ White Bins

23 5/8" W x 8" H x 3 3/8" D



TILT BIN - 4 UNIT 23 5/8" W x 8" H x 6 1/2" D
BIN04-11: Black Frame/ Grey Bins
BIN04-4N: Neon Green Frame/ White Bins
BIN04-2N: Neon Blue Frame/ White Bins
BIN04-6N: Neon Pink Frame/ White Bins



11 13/16" W x 10" H x 4" D

TILT BIN - 6 UNIT
BIN06-11: Black Frame/ Grey Bins
BIN06-4N: Neon Green Frame/ White Bins
BIN06-2N: Neon Blue Frame/ White Bins
BIN06-6N: Neon Pink Frame/ White Bins

23 5/8" W x 10" H x 4" D



TILT BIN - 5 UNIT 23 5/8" W x 6" H x 4 3/4" D
BIN05-11: Black Frame/ Grey Bins
BIN05-4N: Neon Green Frame/ White Bins
BIN05-2N: Neon Blue Frame/ White Bins
BIN05-6N: Neon Pink Frame/ White Bins





14 7/8" W x 7 4/8" H x 6 1/8" D

BENCHTOP CABINET - 20 UNIT

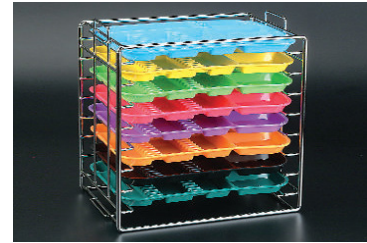
- DRA20-11:** Black Frame
- DRA20-4N:** Neon Green Frame
- DRA20-2N:** Neon Blue Frame
- DRA20-6N:** Neon Pink



17 5/8" W x 9 6/8" H x 1 1/8" D

BENCHTOP CABINET - 14 UNIT

- DRA14-11:** Black Frame
- DRA14-4N:** Neon Green Frame
- DRA14-2N:** Neon Blue Frame
- DRA14-6N:** Neon Pink Frame



- 300TRA:** TRAY RACK, CHROME for Size A Tray (Stackable) 15" W x 9 3/4" D x 14 1/8"H Capacity: 8
- 300TRB:** TRAY RACK, CHROME for Size B Tray (Stackable) 14 1/2" W x 9 3/4" D x 14 1/8"H Capacity: 8
- 300TRD:** TRAY RACK, CHROME for Size D Tray (Stackable) 14 1/2" W x 9 3/4" D x 14 1/8"H Capacity: 8
- 300TRE:** TRAY RACK, CHROME for Size E Tray (Stackable) 16 1/4" W x 9 3/4" D x 14 1/8"H Capacity: 8

300BFS: FLAT TRAY SIZE B (RITTER) 13 1/2" x 9 5/8" x 7/8"

300BDS: DIVIDED TRAY SIZE B (RITTER) 13 1/2" x 9 5/8" x 7/8"

300FMS: FLAT TRAY SIZE F (MINI) 9 5/8" x 6 5/8" x 7/8"

203SCS: INSTRUMENT STERILIZATION CONTAINER 8" x 1 3/4" x 1 3/4", Autoclavable to 250oF

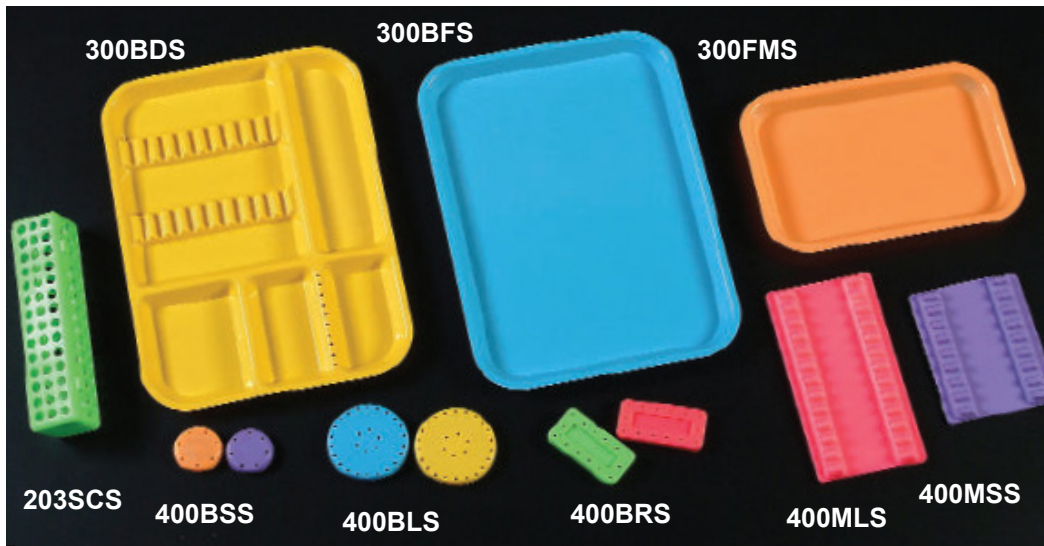
400BLS: LARGE ROUND BUR BLOCK MAGNETIC Capacity: 28, Diameter 2 13/16"

400BSS: SMALL ROUND BUR BLOCK MAGNETIC Capacity: 7, Diameter 1 5/8"

400BRS: RECTANGULAR BUR BLOCK MAGNETIC Capacity: 14, Dimension 3" x 1 1/2" x 1/2" Color: N P

400MLS: LARGE INSTRUMENT MAT Capacity: 12, Dimension 7 1/2" x 4"

400MSS: SMALL INSTRUMENT MAT Capacity: 8 or 12, Dimension 5 3/16" x 4 1/8"



1850: POUCH DISPENSER MULTI-SIZED (22"W x 12 3/4"H x 3 1/4" D)

- Station fits size:
1. 3 1/2" x 5 1/4"
 2. 2 1/4" x 4" and 2 1/4" x 5"
 3. 4 1/4" x 12", 3 1/4" x 12", 3 1/4" x 6 1/2" and 3 1/2" x 6 1/2"
 4. 3 1/2" x 9", 3 1/2" x 10"
 5. 2 3/4" x 9" and 2 3/4" x 10"
 6. 5 1/4" x 12", 5 1/4" x 11", 5 1/4" x 6 1/8", 5 1/4" x 7 1/8"
- *Fits 200 pouches in each station with or without the



Magenetic Bur Stand Colors: Green, Blue, Red, White **400MBS:**



400BC: BUR CADDY Autoclavable Capacity: 12 Reversible for FG & RA Bars, Adjustable 3 Levels Height

STERILIZERS & ACCESS. 2

COMPRESSOR PARTS & ACCESSORIES 3

VACUUM SUPPLIES & ACCESSORIES 4-5

OPERATORY EQUIPMENT 6

OPERATORY ACCESSORIES 7

HANDPIECES & ACCESSORIES 8

LIGHT PARTS 9

DIGITAL EQUIPMENT 9

OFFICE ORGANIZERS 10-17

NITROUS 18-19

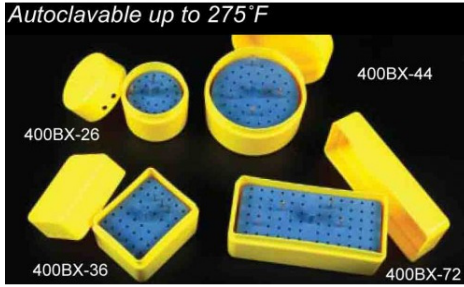
INFECTION CONTROL & DISPOSABLES 20-25

HYGIENE EQUIPMENT & SUPPLY 26-28

IMPRESSION 29

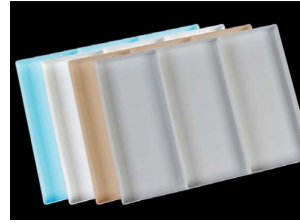
LAB 30

STOOLS 31

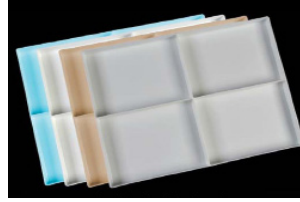


Plasdent Bur Box

- 400BX-26:** SMALL ROUND BUR BOX, 26 FG Burs
- 400BX-36:** SQUARE BUR BOX, 36 FG Burs
- 400BX-44:** LARGE ROUND BUR BOX, 44 FG Burs
- 400BX-72:** RECTANGULAR BUR BOX, 72 FG Burs



DR300:
DRAWER TRAY
16"L x 12 1/5"W x 1"H
Colors: White, Blue, Beige, Gray



DR301:
DRAWER TRAY
16"L x 12 1/5"W x 1"H
Colors: White, Blue, Beige, Gray



Plasdent Endo & Bur Box

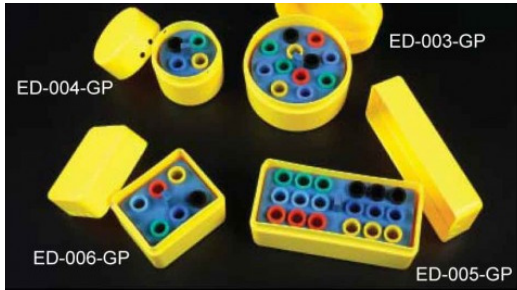
- ED-003-MIX:** LARGE ROUND ENDO BOX, 15 Endo, 15 Burs, 4 Vials
- ED-004-MIX:** SMALL ROUND ENDO BOX, 9 Endo, 9 Burs, 2 Vials
- ED-005-MIX:** RECTANGULAR ENDO BOX, 30 Endo, 30 Burs, 4 Vials
- ED-006-MIX:** SQUARE ENDO BOX, 18 Endo, 18 Burs, 2 Vials



DR302:
DRAWER TRAY
16"L x 12 1/5"W x 1"H
Colors: White, Blue, Beige, Gray



DR303:
DRAWER TRAY
16"L x 12 1/5"W x 1"H
Colors: White, Blue, Beige, Gray



Plasdent Endo Gutta Percha Box

- ED-003-GP:** LARGE ROUND ENDO BOX, 12 Gutta Percha Vials
- ED-004-GP:** SMALL ROUND ENDO BOX, 4 Gutta Percha Vials
- ED-005-GP:** RECTANGULAR ENDO BOX, 18 Gutta Percha Vials
- ED-006-GP:** SQUARE ENDO BOX, 6 Gutta Percha Vials



DR304:
DRAWER TRAY
16"L x 12 1/5"W x 1"H
Colors: White, Blue, Beige, Gray



DR304:
TUB INSERT (DRAWER TRAY)
11 3/8"L x 9 1/4"W x 1 1/8"H
Colors: White, Blue, Beige, Gray



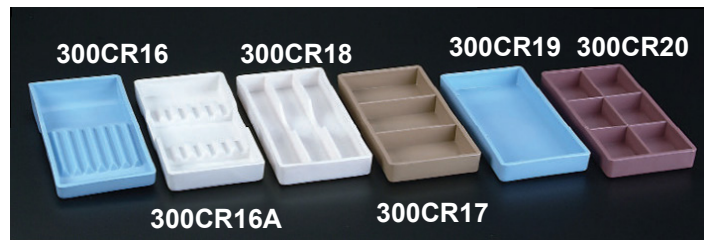
1418: Splash Work Station, **\$59.99 ea**



1416: Wipes Canister Wall Holder



CRH-2: COTTON ROLL HOLDERS, Disposable, Blue



CABINET ORGANIZER: (8"L x 4"W x 1"H)

- 300CR16:** Size 16 300CR16A Size 16A
 - 300CR17:** Size 17 300CR18 Size 18
 - 300CR19:** Size 19 300CR20 Size 20
- Color:** White, Blue, Beige & Mauve Only, Autoclavable





- 500TB:** TUB ONLY
- 500TB-COVR:** TUB LID
- 500TD:** TUB DIVIDER, 6 pcs/set, White
- 500TA:** TUB ACCESSORY TRAY (7 7/8"x 3 7/8"x 1 1/8", White)
- 500TI :** TUB INSERT TRAY (11 1/4"x 9"x 1 1/8", White)
- 500BRB:** TUB RACK, Chrome (15"W x 9 3/4"D x 14 1/8"H, Capacity: 4)
- 500BRB-H:** TUB & LID RACK, Chrome (15"W x 10 3/8"D x 18 3/4"H, Capacity: 4)

PASTEL COLORS

- 500TBS-1PS: Vanilla
- 500TBS-2PS: Baby Blue
- 500TBS-4PS: Seagreen
- 500TBS-7PS: Sand
- 500TBS-10PL: Light Mauve
- 500TBS-10PS: Lilac

NEON COLORS

- 500TBS-2: Neon Blue
- 500TBS-3: Neon Yellow
- 500TBS-4: Neon Green
- 500TBS-6: Neon Pink
- 500TBS-10: Neon Purple
- 500TBS-12: Neon Tangerine

STANDARD COLORS

- 1-White
- 2-Blue
- 3-Yellow
- 4-Green
- 5-Flame
- 6-Coral
- 7-Beige
- 9-Gray
- 10-Mauve
- 11-Black
- 14-Teal



200TRD:
PRO RETAINER BOX
Color: Assorted, 12 pcs/box



CR2000:
CHROMATM RETAINER BOX
Color: Assorted 12 pcs/box



200DB: DEEP DISH RETAINER BOX Color: Assorted
12 pcs/box
200RT: STANDARD RETAINER BOX Color: Assorted
12 pcs/box
200MN: MINI DENTAL APPLIANCE BOX Color: Assorted 12 pcs/box



TC2002: TROPICAL RETAINER BOX
Tropical Color: 2TC,3C,4TC,6TC, 10C,12C and Assorted 12 pcs/box

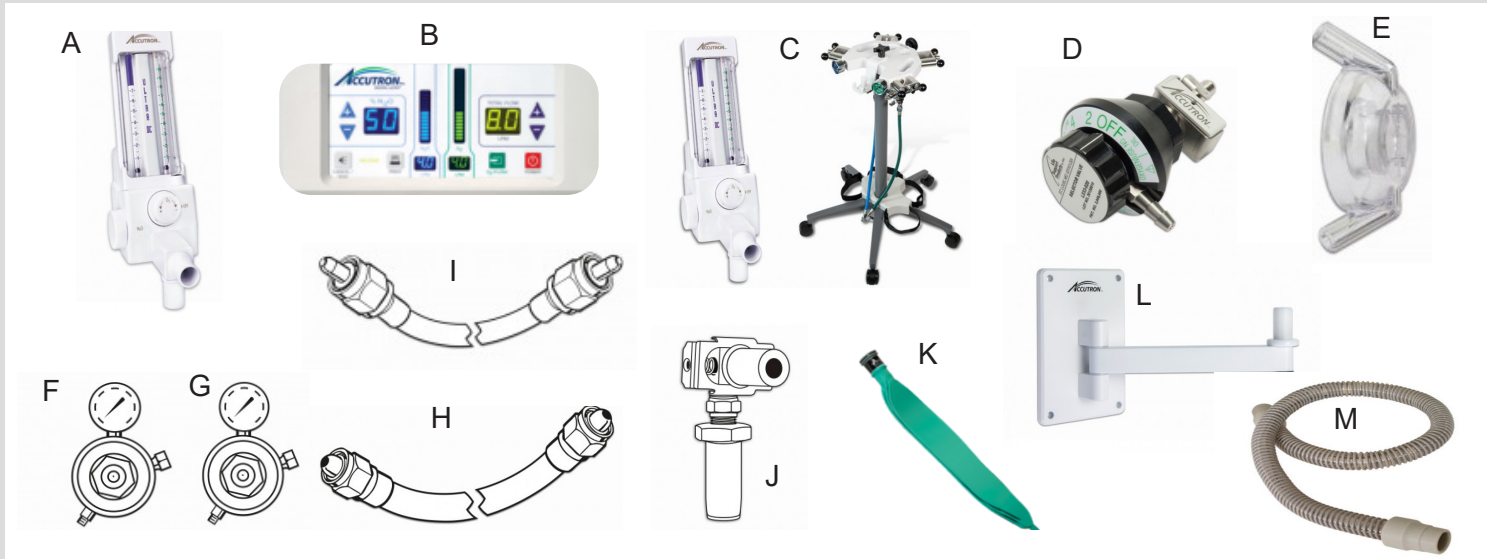


TC2002: TROPICAL RETAINER BOX
Liteflavor Color: 2D,3D,4D,6D,10D, 12D and Assorted 12 pcs/box



OB-1000:
These DENTURE BOXES feature high-impact plastic, 1 piece construction and contoured corners for ease of cleaning. Tight fitting lid holds 1 or 2 dentures. 3" x 2 1/2" x 2" deep. Packed 12 per box

- STERILIZERS & ACCESS. 2
- COMPRESSOR PARTS & ACCESSORIES 3
- VACUUM SUPPLIES & ACCESSORIES 4-5
- OPERATORY EQUIPMENT 6
- OPERATORY ACCESSORIES 7
- HANDPIECES & ACCESSORIES 8
- LIGHT PARTS 9
- DIGITAL EQUIPMENT 9
- OFFICE ORGANIZERS 10-17
- NITROUS 18-19
- INFECTION CONTROL & DISPOSABLES 20-25
- HYGIENE EQUIPMENT & SUPPLY 26-28
- IMPRESSION 29
- LAB 30
- STOOLS 31



- A. **31980** - Accutron Ultra DC Flowmeter
- B. **56600** - Digital Ultra Flushmount Pkg. G (includes mounting hardware)
- C. **46100** - Accutron Ultra DC Flowmeter, Mobile Pkg. B (4-Cylinder)
- D. **35015** - Oxygen Liter-Flow Selector Valve with Bracket
- E. **22099** - Scavenging Hub for PIP+ Scavenging Circuit (clear disk)
- F. **34058** - Accutron Nitrous Oxide Regulator
- G. **34057** - Accutron Oxygen Regulator

- H. **34061** - Accutron Oxygen Hose (DISS 3 feet)
- I. **34062** - Accutron Nitrous Oxide Hose (DISS 3 feet)
- J. **35015** - Accutron Q/C Vacuum Male Connector:
- K. **33025** - Reservoir Bag - 3 liter
- L. **32002** - Accutron 9 inch Wall Arm
- M. **33014** - Accutron 3-foot Corrugated Tube (grey)



ACCUTRON CLEARVIEW SINGLE USE HOODS
12/Packs

- 33034-10**: Large Adult Outlaw Orange
- 33034-14**: Large Adult French Vanilla
- 33034-16**: Large Adult Fresh Mint
- 33034-9**: Large Adult Unscented Grey

- 33035-10**: Adult Outlaw Orange)
- 33035-12**: Adult Birthday Bubblegum
- 33035-14**: Adult French Vanilla
- 33035-16**: Adult Fresh Mint
- 33035-9**: Adult Unscented Grey

- 33037-10**: Pedo Outlaw Orange
- 33037-11**: Pedo Sassy Strawberry
- 33037-12**: Pedo Birthday Bubblegum
- 33037-17**: Pedo Groovy Grape
- 33037-9**: Pedo Unscented



ACCUTRON PIP SINGLE USE HOODS
24/Packs

- 33015-3**: Large Assorted
- 33015-15**: Large Adult Peach
- 33015-14**: Large Adult French Vanilla
- 33015-16**: Large Adult Fresh Mint
- 33015-9**: Large Adult Unscented Grey

- 33016-3**: Medium Assorted
- 33016-10**: Medium Outlaw Orange)
- 33016-12**: Medium Birthday Bubblegum
- 33016-11**: Strawberry
- 33016-14**: Adult French Vanilla
- 33016-15**: Peach
- 33016-16**: Adult Fresh Mint
- 33016-9**: Medium Unscented Grey

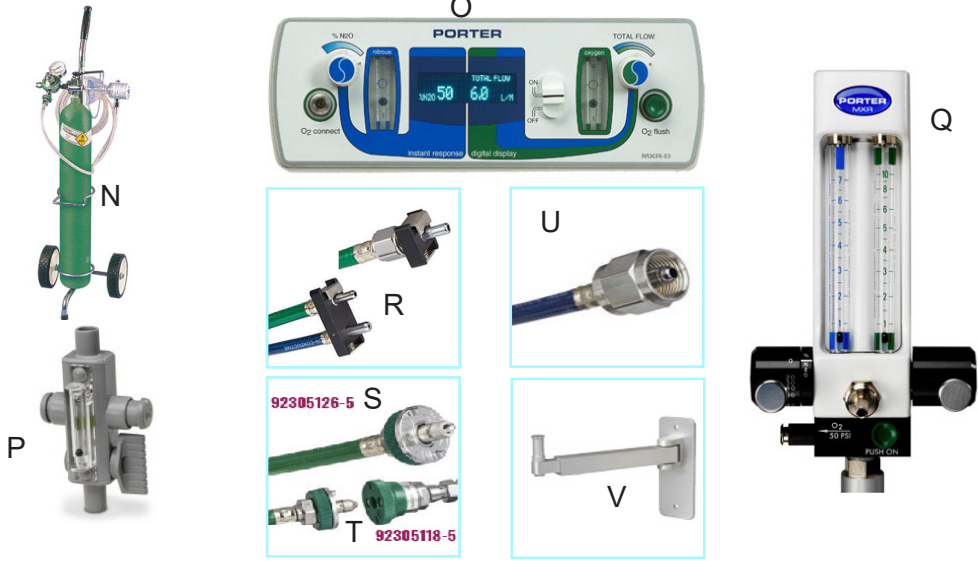
- 33017-9**: Small Unscented Gray
- 33017-10**: Small Orange
- 33017-11**: Small Strawberry
- 33017-17**: Pedo Groovy Grape
- 33017-12**: Bubble Gum



AXESS LOW PROFILE MASK
24/Packs

- 53037-9**: Small Clear Unscented
- 53037-12**: Small Birthday Bubblegum
- 53037-16**: Small Fresh Mint
- 53035-9**: Medium Clear Unscented
- 53035-12**: Medium Birthday Bubblegum
- 53035-16**: Medium Fresh Mint
- 53034-9**: Large Clear Unscented
- 53034-12**: Large Birthday Bubblegum
- 53034-16**: Large Fresh Mint





- N. **1536-1** - Emergency Oxygen System
- O. **4065D** - PORTER MXR-D FLOWMETER
- P. **5501-RK** - In-Line Vacuum Control
- Q. **3000** - Porter MXR Flowmeter Only
- R. **4065D** - PORTER MXR-D FLOWMETER ONLY
- S. **92305126-5** -O2, Matrx (OHIO) Male/DISS Female, 5ft.
- T. **92305118-5** - O2, Matrx (OHIO) Female/DISS Female, 5ft.
- U. **8505** - N2O, DISS/DISS, 5ft., Female **8005** - O2, DISS DISS, 5ft., Female
- V. **2020** - Telescoping Wall Arm



MATRIX DYNAMITES SINGLE USE HOODS

DynoMites are not only fun for your patients – but they are also the smallest disposable nasal hoods available (35% smaller than the competition) – resulting in a better line of sight and improved access to your patient's mouth.

DynoMite 24 PACK

- 91316482:** Bubble Gum Small
- 91316519:** Bubble Gum Medium
- 91316489:** Bubble Gum Large
- 91316483:** Strawberry Small
- 91316520:** Strawberry Medium
- 91316490:** Strawberry Large
- 91316484:** Orange Small
- 91316521:** Orange Medium
- 91316491:** Orange Large
- 91316485:** Vanilla Small
- 91316522:** Vanilla Medium
- 91316492:** Vanilla Large
- 91316486:** Plain Small
- 91316523:** Plain Medium
- 91316493:** Plain Large
- 91316487:** Assorted Scents Small
- 91316524:** Assorted Scents Medium
- 91316494:** Assorted Scents Large
- 91316495:** Assorted Scents Various



DynoMite 12 PACK

- 91316496:** Bubble Gum Small
- 91316503:** Bubble Gum Medium
- 91316510:** Bubble Gum Large
- 91316497:** Strawberry Small
- 91316504:** Strawberry Medium
- 91316511:** Strawberry Large
- 91316498:** Orange Small
- 91316505:** Orange Medium
- 91316512:** Orange Large
- 91316499:** Vanilla Small
- 91316506:** Vanilla Medium
- 91316513:** Vanilla Large
- 91316500:** Plain Small
- 91316507:** Plain Medium
- 91316514:** Plain Large
- 91316501:** Assorted Scents Small
- 91316508:** Assorted Scents Medium
- 91316515:** Assorted Scents Large
- 91316516:** Assorted Scents Various



PORTER AUTOCLAVABLE NASAL HOODS ADULT

- 5054A:** Porter Adult Double Mask Hood Kit w/ 3 Inner Mask Liners, **\$275.00**
- 5054C:** Porter Adult Double Mask w/ 1 Inner Mask Liner, **\$240.00**
- 5054-1:** Porter Adult Inner Mask Liners (3), **\$55.00**



DynoMite UNIVERSAL CONVERSION KIT
In one easy step – convert your existing non-Matrx breathing circuits to allow use of the popular DynoMite Single-Use-Disposable Nasal Hoods.
Includes: DynoMite Nasal Hood, Universal Conversion Kit
Easily retrofit Porter, Accutron and Belmed breathing circuits to use Matrx Dynamite nasal hoods. 91515142



PORTER DISPOSABLE LINERS
For those preferring a single-use disposable nasal hood option, but not switching to sacrifice scavenging efficiency, Porter scented and unscented Disposable Liners are the perfect choice for high volume offices.
12/Pack
5053AD12C: Adult
5053PD12C: Pedo



PORTER SILHOUETTE

Silhouette is a single patient use nasal mask and breathing circuit designed with lightweight tubing and a comfortable and conforming mask.
BEST PRICES AVAILABLE ONLINE!

- SIL-CONN-KIT:** Flowmeter Connection Kit (order one for each flowmeter) Includes: Cannula Adapter Breathing Bag Cap, 6.5' Fresh Gas / Vacuum Tubing, 4 Color Coded Sizer Masks, and Clip
- SIL-VAR-4X3:** Variety 12 Pack: 3 Silhouette Masks of eachsize - Pediatric, Adult Small, Medium, Large,
- SIL-PEDO-12:** 12 Pack: 12 Pediatric Silhouette Masks
- SIL-SM-12:** Adult Small 12 Pack: 12 Adult Small Silhouette Masks
- SIL-MED-12:** Medium 12 Pack: 12 Medium Silhouette Masks
- SIL-LG-12:** Large 12 Pack: 12 Large Silhouette Masks

STERILIZERS & ACCESS. 2

COMPRESSOR PARTS & ACCESSORIES 3

VACUUM SUPPLIES & ACCESSORIES 4-5

OPERATORY EQUIPMENT 6

OPERATORY ACCESSORIES 7

HANDPIECES & ACCESSORIES 8

LIGHT PARTS 9

DIGITAL EQUIPMENT 9

OFFICE ORGANIZERS 10-17

NITROUS 18-19

INFECTION CONTROL & DISPOSABLES 20-25

HYGIENE EQUIPMENT & SUPPLY 26-28

IMPRESSION 29

LAB 30

STOOLS 31



SurgiCare Nitrile Exam Gloves
200/bx Purple - MARK3
X-Small
Small
Medium
Large
X-Large



LEVEL 3, 3-PLY Earloop Mask
36LAV: Lavendar
36BLU: Blue
50/Box



K-95 Mask
20/Box



SHARPS CONTAINERS
SC-01QT: 1 Quart Tray Size
SC-04QT: 4 Quart Small Size
SC-08QT: 8 Quart Medium Size
SC-16QT: 16 Quart Large Size



DEFEND PLASTIC HUB NEEDLES
DN-2000: 27GA LONG
DN-2100: 27GA SHORT
DN-3000: 30GA SHORT
DN-3100: 30GA EXTRA SHORT
100/box



SYRINGE NEEDLE COMBO LUER-LOK TIP
309575: LENGTH 1 1/2" / 4CM, 21 GAUGE, 3ML
309577: LENGTH 1 1/2" / 4CM, 21 GAUGE, 3ML
309572: LENGTH 1 1/2" / 2CM, 22 GAUGE, 3ML
309570: LENGTH 5/8" / 1CM, 25 GAUGE, 3ML
\$25.00 / 100 box

309631: LENGTH 1 1/2" / 4CM, 22 GAUGE, 5ML
/ 100 box



SYRINGE
309585: SIZE 3ML, 100/Box
309603: SIZE 5ML, 100/Box
309604: SIZE 10ML, 100/Box
309661: SIZE 20ML, 40/Box



1 GALLON TABLE TOP
SLIDING TOP SHARPS CONTAINER
Medline Sharps Container, Mailbox style,
Red
MEDL MDS705201: \$7.49



MONOJECT NEEDLES

Plastic Hub
KH-0074: 30GA SHORT BLUE
KH-0058: 27GA LONG YELLOW
100/box

Metal Hub
KH-1072: 30GA SHORT BLUE
KH-1056: 27GA LONG YELLOW



250/bx

TIDI INFECTIOUS WASTE BAGS
BAN 8653 24"x24" (10 gal)
BAN 8654 24"x37" (16 gal)
BAN 8656 33"x40" (33 gal)
BAN 8657 40"x48" (40 gal)



MEDLINE 5 QUART SHARPS
CONTAINER
Medline Sharps Container, Mailbox
style, Red
MEDL MDS705153

TOPICAL ANESTHETIC, 1 OZ
20% Benzocaine Anesthetic Gels. Fast acting with
no systemic absorption.

TA-5000: STRAWBERRY
TA-5001: CHERRY
TA-5002: PINA COLADA
TA-5003: MINT
TA-5004: BUBBLE GUM
TA-5005: GRAPE
TA-5006: MANGO
TA-5007: RASPBERRY
TA-5008: BANANA





MA-01: UNTIPPED, HVE LUER ADAPTOR
MA-18: TIPPED, 18 GAUGE, Pink
MA-20: TIPPED, 20 GAUGE, Yellow
MA-25: TIPPED, 25 GAUGE, Blue
99/bag

MONOVAC IRRIGATION NEEDLE TIPS



Comparable to Monoject® style

INT-M23: 23ga, Blue - **\$15.99 100/box**
INT-M27: 27ga, Yellow - **\$15.99 100/box**
INT-M30: 30ga, Purple - **\$21.99/box of 100**

PROBEVAC IRRIGATION NEEDLE TIPS



Comparable to Max-I-Probe™ style

INT-P23: 23ga, Blue - **100/box**
INT-P27: 27ga, Yellow - **100/box**
INT-P30: 30ga, Purple - **100/box**



Plastic Hub Needles
DN2000: 27L Yellow
DN2100: 27S Yellow
DN3000: 30S Blue
DN3100: 30XS Blue

MONOVAC PRE-TIPPED 3cc SYRINGES



INT-MPT0323: 23g, Blue
INT-MPT0327: 27g, Yellow
INT-MPT0320: 30g, Purple

PROBEVAC PRE-TIPPED 3cc SYRINGES



INT-PPT0323: 23g, Blue
INT-PPT0327: 27g, Yellow
INT-PPT0320: 30g, Purple

LUER LOCK & UTILITY SYRINGES - Disposable, Non-sterile



IRRIGATION SYRINGES

LL12: 12cc LUER LOCK SYRINGES, box of 100 **100/bag**
LL06: 6cc LUER LOCK SYRINGES, box of 100, **100/bag**
LL03: 3cc LUER LOCK SYRINGES, box of 100, **100/bag**
LLUT: 12cc UTILITY SYRINGES, box of 50, **100/bag**



SYRINGE TIPS, 250/ BAG
AW-1000: clear
AW-3000: blue



DISPOSABLE DAPPEN DISH
 Designed to prevent cross contamination for a variety of procedures. Assorted colors. 1000/box. **DD-5000**



4002SD: 2x2 Dispenser - Blue



MICROBRUSH 400/PACK
 Packaged in convenient, practical tubes for hygienic dispensing

MRB400: REGULAR (2.0MM) BLUE
MRG400: REGULAR (2.0MM) GREEN
MRS400: REGULAR (2.0MM) PEACH
MRP400: REGULAR (2.0MM) PURPLE
MRA400: REGULAR (2.0MM) ASSORTED
MFP400: FINE (1.5MM) PINK
MFY400: FINE (1.5MM) YELLOW
MFA400: FINE (1.5MM) ASSORTED
MSF400: SUPERFINE (1.0MM) WHITE



DISPOSABLE ANESTHETIC BIB HOLDER
 Disposable (Paper) Bib Holders. No sharp edges or cold chain. Stretch to fit, self-adhesive ends. 250 per box, **PB-8500**



NON-WOVEN SPONGES
 4 Ply. Non-sterile. Made from 30 gram weight rayon/polyester blend. Absorbent, soft, smooth and strong. Can be used for patients, disinfecting and general cleaning.

NW-0200: 5,000/CASE, 2"X2"
NW-0300: 4,000/CASE, 3"X3"
NW-0400: 2,000/CASE, 4"X4"

COTTON FILLED SPONGES
MYD CS-0100: 2"x2"

STERILIZERS & ACCESS. 2

COMPRESSOR PARTS & ACCESSORIES 3

VACUUM SUPPLIES & ACCESSORIES 4-5

OPERATORY EQUIPMENT 6

OPERATORY ACCESSORIES 7

HANDPIECES & ACCESSORIES 8

LIGHT PARTS 9

DIGITAL EQUIPMENT 9

OFFICE ORGANIZERS 10-17

NITROUS 18-19

INFECTION CONTROL & DISPOSABLES 20-25

HYGIENE EQUIPMENT & SUPPLY 26-28

IMPRESSION 29

LAB 30

STOOLS 31



PAPER & POLY HEADREST COVERS

A wide variety of convenient, high-quality products that offer comfort and protection on demand.. 500/box
919711: 10x10
919811: 10x13



HEADREST COVERS

These Headrest Covers are designed to fit over the top of headrests. They are made of clear plastic and are easy to apply and dispose of. 250/box
BF-9000: 9.5" x 11"
BF-9500: 9.5" x 14"



COTTON ROLLS DISPENSER

Flip-up top for easy loading. Holds up to 50 cotton rolls. Convenient slide out drawer dispenses up to 4 rolls.
4"X3.3"X2"/10X9X5CM
PDCBL: BLUE
PDCWH: WHITE

5 OZ. CUPS
1,000/Case
CXBL: BLUE
CXGR: GREEN
CXLV: LAVENDER
CXWH: WHITE



WE REPAIR HANDPIECES!

We repair and sell handpieces. We repair highsPEEDS, slowsPEEDS, fiber optics and all brands.



ADVANTAGE COTTON ROLLS
DNAC: 2,000/BOX, WHITE NON-STERILE.

DEFEND COTTON TIP APPLICATORS

Non-sterile.
1,000/BOX, WHITE
CS-3000: 3 inch
CS-6000: 6 inch



DRY TIPS
50/BOX



MOL 161000: Small Green
MOL-161100: Large Blue



TRAY PAPER SIZE B COVERS
TC-9000: WHITE
TC-9002: MAUVE
TC-9003: GREEN
TC-9004: LAVENDER



2-PLY BIBS
500/box
917463: BLUE
917462: GREEN
917459: LAVENDER



3-PLY BIBS
500/box
100-3PLY: BLUE
101-3PLY: GREEN
102-3PLY: LAVENDER



CROSSTEX LATEX DENTAL DAMS
5x5 Mint Flavored, 52 sheets/box

19202: THIN GAUGE - 0.125-0.160 AVG
0.14MM

19200: MEDIUM GAUGE - 0.165-0.200 AVG
0.18MM

19201: HEAVY GAUGE - 0.205-0.240 AVG
0.22MM



DISPOSABLE LAB COATS
10/bag
SG-9003: SMALL
SG-9004: MEDIUM
SG-9005: LARGE
SG-9006: XLARGE
SG-9007: XXLARGE
SG-9008: XXXLARGE

DISPOSABLE TIE BACK GOWNS
10/bag

SG-1000: 40" Length, Medium
SG-1001: 48" Length, Large



TONGUE DEPRESSORS
Smooth and splinter-free. Box is poly wrapped and self dispensing. Medical grade.500/box
IC



PLASDENT DISPOSABLE MOUTH MIRRORS
48/Box, **200MMR**





PS650: HEADREST COVER
9 1/2"L x 11"W, Box of 250,
PS660: LARGE HEADREST
COVER 10"L x 14"W, Box of
250



PS650: HEADREST COVER
9 1/2"L x 11"W, Box of 250
PS660: LARGE HEADREST
COVER 10"L x 14"W,
Box of 250



PS3767-WO:
2 1/2"W x 10"L, Notched
Box of 500
PS321:
2 1/2"W x 10"L, 3 Quarter
Sealed, Box of 500



BF4000: HALF CHAIR
COVERS
27.5" x 24" 250/box,

BF4500: FULL CHAIR
COVERS 22"W x 14"L, Box
of 250

PSP Easy Tear Size 0-4 Envelopes

BE-000S: #0 100/Box
BE-001S: #1 100/Box
BE-002S: #2 100/Box

BE-003S: #3 100/Box
BE-004S: #4 50/Box



Value PSP Envelopes

BEAT-000: #0
BEAT-001: #1
BEAT-002: #2
100/box



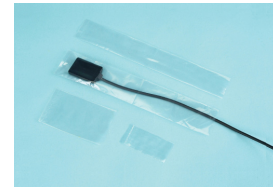
Easy Tear PSP Envelopes

BEAT-000S: #0
BEAT-001S: #1
BEAT-002S: #2
100/box



Phosphore Plate Envelopes. Made of soft,
supple vinyl with rounded corners to maximize
patient comfort, these envelopes are available
in sizes 0, 1, and 2 **100/box**

BF8700: Size 0
BF8800: Size 1
BF8900: Size 2



PS500: BITE BLOCK COVER
1"W x 2"L, Box of 1000
PS510: BITE BLOCK COVER
2"W x 3"L, Box of 1000
PS520: #2 SENSOR COVER
1 5/8"W x 8 3/8"L, Box of 500
PS530: #0 SENSOR COVER
1 3/8"W x 8 3/8"L, Box of 500



PS410: LCD + KEYBOARD COVER
22"W x 26"L, Box of 250
PS410-ST: LCD COVER
22"W x 16"L, Box of 250
PS422: LAPTOP COVER
15"W x 22"L, Box of 250
PS425: LAPTOP COVER
15"W x 25"L, Box of 250



Digital Sensor Sleeves, No Paper Backing



Digital Sensor Sleeves, Paper Backing

PS-CYGNUS-1: Cygnus Ray Size 1	PS-GXDR-1: Gendex/XDR Size 1	XS-CYGNUS-1: Cygnus Ray Size 1	XS-GXDR-1: Gendex/XDR Size 1
PS-REGAM-2: Regam Size 2	PS-GXDR-2: Gendex/XDR Size 2	XS-REGAM-2: Regam Size 2	XS-GXDR-2: Gendex/XDR Size 2
PS-SUNI-2: Suni Size 2	PS-6100-0: Kodak Size 0	XS-SUNI-2: Suni Size 2	XS-6100-0: Kodak Size 0
PS-DEXIS-2: Dexis Size 2	PS-6100-1: Kodak Size 1	XS-DEXIS-2: Dexis Size 2	XS-6100-1: Kodak Size 1
PS-SHICK-1: Schick Size 1	PS-6100-2: Kodak Size 2	XS-SHICK-1: Schick Size 1	XS-6100-2: Kodak Size 2
PS-SHICK-2: Schick Size 2	500/box	XS-SHICK-2: Schick Size 2	500/box



PS4550: CURING LIGHT HANDLE COV-
ER, 5"W x 10"L, **400/box**
PS4660: COMPLETE CURING LIGHT
COVER 3 1/4"W x 12"L **250/box**
PS-DEMI: CURING LIGHT COVER for
DEMI. **400/box**
PS-LED: LED CURING LIGHT COVER
3 1/4"W x 12"L, **250/box**

X-Ray Head Sleeves are de-
signed to fit over most X-Ray
heads. The barrier is made
of clear plastic and is easy to
apply. 15" x 26", 250/Box



BF6000: \$23.99



PS405: PC MOUSE COVER
500 pcs/box
PS400: KEYBOARD COVER
22"W x 14"L, Box of 250
PS400-S: SMALL KEYBOARD COVER
12 1/2"W x 8"L, Box of 250



PS200: UNIVERSAL TRAY COVER 12"W x 16"L,
Fits "A", "B", "E" size trays, Box of 500

PS201: SIZE "B" TRAY COVER 10 1/2"W x 14"L
(w/Lock Top), Also fits size "D" trays, Box of 500

PS202: SIZE "A" TRAY COVER 11 5/8"W x 14 1/2"L
(w/Lock Top), Box of 500

PS203: SIZE "E" TRAY COVER 11 1/2"W x 16"L
(w/Lock Top), Box of 500

PS204: SIZE "F" TRAY COVER 7 1/2"W x 10 1/2"L
(w/Lock Top), Box of 500

STERILIZERS
& ACCESS.
2

COMPRESSOR
PARTS &
ACCESSORIES
3

VACUUM
SUPPLIES &
ACCESSORIES
4-5

OPERATORY
EQUIPMENT
6

OPERATORY
ACCESSORIES
7

HANDPIECES &
ACCESSORIES
8

LIGHT PARTS
9

DIGITAL
EQUIPMENT
9

OFFICE
ORGANIZERS
10-17

NITROUS
18-19

INFECTION
CONTROL
& DISPOSABLES
20-25

HYGIENE
EQUIPMENT &
SUPPLY
26-28

IMPRESSION
29

LAB
30

STOOLS
31



SUPER SANI-CLOTH XL
 Germicidal Disposable Wipes
 Super Sani-Cloth® Germicidal
 XL Disposable Wipes, Bacteri-
 cidal, Tuberculocidal, Virucidal
 in 3 minutes. Fragrance Free.
 160/wipes a Tub, 6 / Per Case
SANXLS2



SANI-CLOTH PLUS
 Ideal for use in alternate care
 settings including dental offices.
 Effective against 16 microorganisms
 in 3 minutes - including bloodborne
 pathogens, viruses, and bacteria.
SANL

**SAFE FOR
 YOUR CHAIR
 UPHOLSTERY!!**



SCICAN OPTIM WIPES
 1-minute bactericidal and virucidal
 contact time
 5-min tuberculocidal contact time
 30-second sanitizer for your envi-
 ronmental surfaces
OPT33-W12



METREX CAVICIDE
 Kills TB in 3 minutes and MRSA,
 HIV-1 and HBV and HCV in 2 min-
 utes, 1 Gallon
13-1000



METREX METRICIDE
 28 Day with activator, 1 Gallon
10-2800



METREX CAVIWIPES
 CaviWipes can, Tub STD160
 towelettes/can 12 TUBS/CASE
13-1100: Regular
13-1150: X-Large



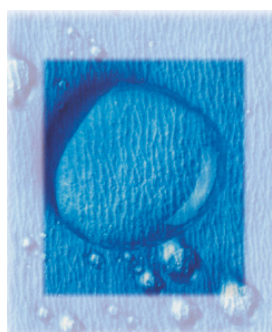
TARTAR STAIN REMOVER #4
 1 Gallon
SO-9600



**METREX CAVICIDE 2.5
 GALLONS**
 2/case
13-1025



STERILIZATION POUCHES
 200/Box
100-6110: 2.25 x 4
100-6112: 2.75 x 10
100-6114: 3.5 x 10
100-6113: 3.5 x 6.5
100-6117: 5.75 x 7.5
100-6118: 5.25 x 11
100-6119: 7.5 x 132
100-6121: 12 x 18



STERILIZATION WRAP
 Use with EtO, steam, gamma
 irradiation, E-beam sterilization t
 echnology.

SW12: 1000/CASE, 12"X12"
SW15: 500/CASE, 15"X15"
SW18: 500/CASE, 18"X18"
SW20: 500/CASE, 20"X20"
SW24: 500/CASE, 24"X24"
SW30: 250/CASE, 30"X30"
SW36: 250/CASE, 36"X36"
SW40: 250/CASE, 40"X40"
SW48: 100/CASE, 48"X48"
SW54: 100/CASE, 54"X54



CROSSTEX CONFIRM
 Mail-in Sterilizer Monitoring
 Service

CVT120: 12 Tests (2 Strip Test, 1
 Test & 1 Control)

CVT520: 52 Tests (2 Strip Test, 1
 Test & 1 Control)

**3rd party documentation of testing and test results pro-
 vides a tangible online record when proof of testing and
 subsequent results must be provided**

Compatible with steam, EtO, chemical vapor and dry heat
 sterilizers
 Results in 24 hours for steam, 72 hours for chemical vapor
 and 7 days for dry heat and EtO from start of incubation period
 at processing laboratory
 Choice of immediate test failure notification by fax or email
 with a courtesy call the next day from a clinical advisor
 Results available online 24/7 on our secure, confidential
 website
 Complimentary reminder service notifies practice of missed
 test date by either fax or email
 Comprehensive test results are sent quarterly and annually
 by fax or email
 MSM (Multi-Site Monitoring) Compliance Bridge compli-
 mentary service available for practices with multiple locations
 Spore strips contain highly resistant dual-species bacterial
 spores providing the most reliable method of testing for an
 effective sterilization cycle



DEFEND STERILIZATION TAPE
 60 Yard/Roll
AT-2001: 1/2" inch
AT-2002: 3/4" inch
AT-2003: 1" inc





CROSSTEX BARRIER FILM
1200 Sheets/Roll
Blue & Clear
4"X6" / 10X15CM
BFCL: Clear
BFBL: Blue



DEFEND BARRIER FILM
1200 Sheets/Roll
Blue & Clear
4"X6" / 10X15CM
BF-1500: Clear
BF-2500: Blue



CROSSTEX LIGHT HANDLE SLEEVES T-STYLE
500/Dispenser Box Clear
4"X5.75" / 10X14.5CM
BCLST



DEFEND LIGHT HANDLE SLEEVES T-STYLE
500/Dispenser Box Clear
4"X5.75" / 10X14.5CM
BF-5000



DEFEND FULL CHAIR COVERS
125/Dispenser Box Clear
BF-4500



CROSSTEX HALF CHAIR SLEEVES
Clear, 225/Roll
2.75"X24" / 70X61CM/Roll
BCCS



DEFEND TRAY SLEEVES
500/Dispenser Box Clear
BF-7500: 11 x 16
BF-7000: 10.5 x 14



CROSSTEX SIZE B TRAY SLEEVES
500/BOX, CLEAR
BCTS1014: 10.5x14
BCTS1014: 11.5x14.5



SYRINGE SLEEVES
500/Dispenser Box Clear
2.5"X10" / 6X25CM
BCSS



SYRINGE SLEEVES
500/ Box Clear
2.5"X10"
BF-3000



DEFEND HEADREST COVERS
These Headrest Covers are designed to fit over the top of headrests. They are made of clear plastic and are easy to apply and dispose of. 250/box
BF-9000: 9.5" x 11"
BF-9500: 9.5" x 14



HANDPIECE SLEEVES
500/ Box Clear
1.5"X8"
IN-5006



DEFEND X-RAY HEAD COVERS
250/Box
15"X26"
BF-6000



CROSSTEX iBARRIER
The newest member of the Crosstex surface barrier family, iBarrier™ is a single-use disposable sleeve specifically designed to protect today's tablets.
BCIB: 100 SLEEVES, CLEAR



DEFEND ULTRASONIC TABLETS
These easy-to-use enzymatic tablets dissolve in a gallon of water in under a minute to create a powerful and effective ultrasonic cleaning solution. Made from a biodegradable, non-chlorine, non-corrosive formulation that contains fast acting protease enzymes. 64/BOX
UT-1000



Bite Block Covers
Disposable 1000/Bx
565-1850

STERILIZERS & ACCESS. 2

COMPRESSOR PARTS & ACCESSORIES 3

VACUUM SUPPLIES & ACCESSORIES 4-5

OPERATORY EQUIPMENT 6

OPERATORY ACCESSORIES 7

HANDPIECES & ACCESSORIES 8

LIGHT PARTS 9

DIGITAL EQUIPMENT 9

OFFICE ORGANIZERS 10-17

NITROUS 18-19

INFECTION CONTROL & DISPOSABLES 20-25

HYGIENE EQUIPMENT & SUPPLY 26-28

IMPRESSION 29

LAB 30

STOOLS 31

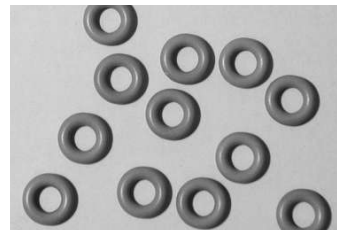


**Newtron® Booster
A GENTLE TREATMENT**

Newtron® Booster preserves the teeth and the soft tissue : - its perfectly controlled ultrasonic vibrations allow precise and gentle treatments - the specific quality of the steel of the tips preserves the anatomy and enamel.



VECTOR PROPHY PLUS
KaVo Type Swivel Connection w/ Tip (Note: Powder and swivel sold separately).
1 year limited warranty
PPW-K



CAVITRON INSERT O-RINGS
Fits CAVITRON Jet nozzle, Slimline, P Style, CAVITRON Med and Pel inserts
Autoclavable, Green color
Packaged in resealable bag
DENTSPLY cross ref. # 62605
Pkg. of 12, **95-228-00**

COME WITH 2 FREE TIPS - \$200 VALUE

VECTOR LIL BEAVER ULTRASONIC SCALER



Available in High-Tech Black or Ultra White.
1 year warranty
SC001



Piezo Scaler w/ LED Handpiece, Desktop 3 Mode and Built in Self-contained Bottle

**EMS # 10-PTL-E:
Satelec # 10-PTL-S:**



Piezo Scaler Desktop 3 Mode
Satelec # 10-UDS-AS



Deluxe Analog Piezo Scaler (EMS Compatible)
Set # 10-UDS-K

VECTOR DELUXE BUILT-IN SCALER

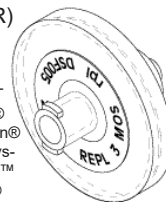


- INCLUDES:**
- Control box
 - Handpiece
 - 6 regular tips (G1, G2, G3, G4, P1, E1)
 - Endo file wrench
 - Scaling tip wrench
 - Power Transformer
 - Air to electric switch
 - Power control module
 - Instruction Manual
- 1 year limited warranty
**EMS # 10-BI:
Satelec # 10-BI-S**



DENTAMERICA BUILT IN PIEZO SCALER
Streamlined compact size and slim lightweight handpiece. Extremely gentle on the patient. Endodontic tip optional. Special built-in design for dental unit.
EMS type tips compatible.
158A

DISC FILTER (WATER)
Cavitron® BOBCAT® 25 KHz - G115, Cavitron® BOBCAT® Pro - G130, Cavitron® JET Plus™ - G132, Cavitron® JET with SPS™ - G120, Cavitron® Plus™ Scaler - G131, Cavitron® Prophy-JET® Air Polishing System - G122, Cavitron® Select™ Scaler 25K - G121, Cavitron® Select™ SPS™ 30K
DSF005



Universal General Scaling Long - Longest tip - thicker for heavier scaling

**EMS # 11-G3
Satelec # 11-G3-S**



Universal General Scaling - UniLess Curve

**EMS # 11-G5
Satelec # 11-G5-S**



Universal General Scaling - Heavy Duty with Flat Beaver Tail

**EMS # 11-G6
Satelec # 11-G6-S**



Perio Tip Subgingival Scaling - Thin sharp point.

**EMS # 11-P1
Satelec # 11-P1-S**



Perio Tip Subgingival Scaling Long - Longest thinnest tip

**EMS # 11-P3
Satelec # 11-P3-S**



Perio Tip Surgery Diamond
Designed for root planeing and shaping during periodontal flap surgery. Shape: Same shape as P3 with diamond plating.

**EMS # 11-P3D
Satelec # 11-P3D-S**



Perio Tip Subgingival Scaling - Round tip no sharp cutting edge.

**EMS # 11-P4
Satelec # 11-P4-S**



Perio Tip Subgingival Scaling Diamond

**EMS # 11-P4D: \$95.00
Satelec # 11-P4D-S: \$95.00**



Universal General Scaling - Rounded Tip

**EMS # 11-G1
Satelec # 11-G1-S**



Universal Heavy Calculus Removal - Rounded beaver tail

**EMS # 11-G2
Satelec # 11-G2-S**



Endo 120° Endo Angle Chuck

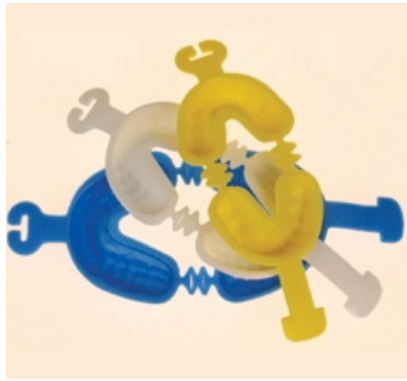
**EMS # 11-E
Satelec # 11-E1-S**

BUY 6 PIEZO TIPS GET 4 FREE





CROSSTEX SPARKLE PROPHY PASTE
200/box
UPCBG: BUBBLE GUM - COARSE
UPCB: BERRYLICIOUS ASSORTED – COARSE
UPCCH: CHERRY - COARSE
UPMB: BERRYLICIOUS ASSORTED – MEDIUM
UPCM: MINT - COARSE
UPCOV: ORANGE VANILLA - COARSE
UPCA: ASSORTED FLAVORS - COARSE
UPMBG: BUBBLE GUM - MEDIUM
UPMCH: CHERRY - MEDIUM
UPMM: MINT - MEDIUM
UPMOV: ORANGE VANILLA - MEDIUM
UPMA: ASSORTED FLAVORS - MEDIUM
UPFBG: BUBBLE GUM - FINE



DUAL ARCH GEL TRAY
50/box
YFTHS: YELLOW, SMALL
YFTHM: WHITE, MEDIUM
YFTHL: BLUE, LARGE



FLUORIDE GEL
16 oz bottle
UFGAG: GRAPE
UFGADM: DYE FREE MINT



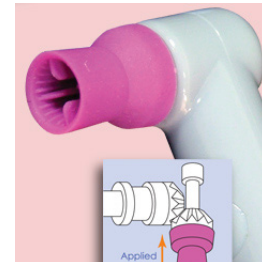
FLUORIDE FOAM
16 oz bottle
FFGR: GRAPE
FFBG: BUBBLE GUM



CROSSTEX TWIST PLUS PROPHY ANGLES
100/box
TPLUSPAFC: FIRM CUP, WHITE
TPLUSPASC: SOFT CUP, GRAY
TPLUSPATB: TAPERED BRUSH



CROSSTEX TWIST PROPHY ANGLES
100/box
TPASC: SOFT CUPS
TPAFC: FIRM CUPS
TPAFB: FLAT BRUSH
TPATB: TAPERED BRUSH



CROSSTEX SPARKLE PROPHY ANGLES
500/box
TPASSC5: SOFT CUP-PURPLE
TPASFC5: FIRM CUP-WHITE
TPATBC5: TAPERED BRUSH



PULPDENT EMBRACE™ Varnish 5% Sodium Fluoride with CXP™

FV50 - 50 x 0.4 mL Embrace Varnish unit dose with applicator brush

FV200 - 200 x .04 mL Embrace Varnish unit dose with applicator brush

FVX100 - Economy Pack: 100 x 0.4 mL unit dose packets only (no brush)

FVT - Tube, 12mL



INTERDENTAL BRUSHES,
36/bag
Pink: .50 mm, 12 mm bristle length
Violet: .65 mm, 15 mm bristle length
Green: .75 mm, 18 mm bristle length
Blue: Tapered, .80 mm, 13 mm bristle length
Orange: .80 mm, 18 mm bristle length



TOOTHBRUSHES
72/box, 37705



CROSSTEX PROGAURD™ 5% SODIUM FLUORIDE VARNISH
50 UNIT DOSES/BOX
UFVPM: MINT
UFVPLM: MELON



PLASDENT BULK FLOSS
200 yard refill, Mint Waxed
PLD 2800

STERILIZERS & ACCESS.

2

COMPRESSOR PARTS & ACCESSORIES

3

VACUUM SUPPLIES & ACCESSORIES

4-5

OPERATORY EQUIPMENT

6

OPERATORY ACCESSORIES

7

HANDPIECES & ACCESSORIES

8

LIGHT PARTS

9

DIGITAL EQUIPMENT

9

OFFICE

ORGANIZERS

10-17

NITROUS

18-19

INFECTION CONTROL

& DISPOSABLES

20-25

HYGIENE EQUIPMENT & SUPPLY

26-28

IMPRESSION

29

LAB

30

STOOLS

31



Universal Desensitizing Agent

- Quick & Easy Application
- Universal Compatibility
- Antimicrobial Agent, 10ml Bottle

DD-1000



200/box

- PP-1000:** Coarse Assorted
- PP-1100:** Coarse Mint
- PP-1200:** Coarse Cherry
- PP-1300:** Coarse Vanilla Orange
- PP-1500:** Medium Mint
- PP-1600:** Medium Cherry
- PP-1700:** Medium Vanilla/Orange
- PP-1800:** Fine Bubble Gum



Disposable Propy Angles, Latex Free, Smooth runnin, vibration free, Flared cup design reduces splatter, 100 per box

PA-6000: Firm Cup (Purple)
PA-7000: Soft Cup (Green)



Plasdent Waxsii Flossie, Floss

2700: Waxsii Flossii, Waxed Regular Floss, 200 Yard Roll

2800: Waxsii Flossii, Mint Waxed Floss 200 Yard Roll



Light Curing Pit and Fissure Sealant. Covers and seals pits and fissures in occlusal surfaces of posterior teeth to aid resistance to caries in those surfaces. Contains: 4 -1GM Syringes LC Opaque Sealant, 1-3ml Bottle Etchant Liquid, 6 -22GA Black Metal Pre-Bent Syringe Tips. **PF1000:**



A 37% phosphoric acid gel for etching the tooth enamel. Contains: 2-2ml Syringe Etchant Gel, 20- Blue Metal Pre-Bent Syringe Tips

PF2000:



200TC-A: TONGUE CLEANERS Assorted Colors 48 pcs/bag



200MMR-A: DISPOSABLE MOUTH MIRROR Assorted 6 Bright Colors 48 pcs/bag



2500: Texture Grip Child Toothbrush

432/Custom Brushes (your contact info/logo)



3770S: Adult Soft rubber grips for easy control. 5 assorted colors.

432/Custom Brushes



402Kit Adult Kits: Preassembled kit comes packaged in a clear zip bag with a business card pouch. Kit includes:

- 1) Your choice of any adult toothbrush imprinted with your logo and/or information
- 2) 15M floss
- 3) 2-minute timer
- 4) .85oz Crest mint toothpaste
- 5) Matching Travel Cap

144/Custom Kits



Moderate Brush

2000M: Interdental Brushes
2050M: Interdental Angle Brushes Light Blue & Mauve Assorted, 50/Box



Tight Brush

2000S: Interdental Brushes
2050S: Interdental Angle Brushes Orange & Green Assorted, 50/Box



Wide Brush

2000L: Interdental Brushes
2050L: Interdental Angle Brushes Dark Blue & White Assorted, 50/Box





Single Size of 25 Trays
 Single Size of 50 Trays
 Assorted of 48 Trays
 Assorted of 60 Trays

VPS IMPRESSION MATERIAL

Light Body, 4(50ml) HP

MYD-VP9003: Regular Set

MYD-VP9008: Fast Set

Medium Body, 4(50ml) HP

MYD-VP9004: Regular Set

MYD-VP9009: Fast Set

Monophase Body, 4(50ml) HP

MYD-VP9005: Regular Set

MYD-VP9010: Fast Set

Heavy Body, 4(50ml) HP

MYD-VP9007: Regular Set

MYD-VP9011: Fast Set

Putty (2 jars 600ml total)

MYD-VP8006: Regular set

MYD-VP8008: Fast set



3Disc HERON IMPRESSION SCANNER

Easy to use and intuitive Software.

Designed for a simpler, faster and more accurate impression, making Dentists confident in the success of their scans

Comes with Computer

Heron™ IOS

Bringing beauty and simplicity to your workday
 The Heron™ IOS is a digital 3D imaging solution design to bring simplicity to your work as a medical professional.



INTRAORAL TIPS

Tips provide precise placement interproximally. Fits 4.2mm mixing tips and to be used with HP Mixing tip #VP-8105

MYD-VP8103: Yellow Intra oral



CROWN & BRIDGE TIPS

MYD-VP8108: 10:1 Ratio+4:1 Ratio

MYD-VP8111: 1:1 Ratio



BITE REGISTRATION

Mousse-like and Thixotropic, fluffy vinyl polysiloxane material.

Used for bite registration, copying transfers, and primary impression with bite trays.
 2 – 50ML CARTRIDGES and 6 mixing tips & 6 ribbon tips!

MYD BR-9001: Unflavored regular set

MYD BR-9002: Unflavored fast set

MYD BR-9003: Unflavored super fast set

MYD BR-9010: "Hard Bite" Fast set

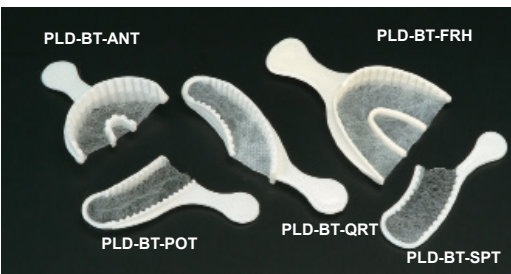


PUTTY

Super Hydrophilic Vinyl Polysiloxane Putty Material

Contains 2x jars 300 ml each of base & catalyst (600ml total)

VP-8006 - Regular Set
 VP-8008 - Fast Set



PLASDENT EXCELLENT DISPOSABLE TRAYS

PLD BT-ANT: Anterior Trays 40 pieces/bx

PLD BT-POT: Posterior Trays 50 pieces/bx

PLD BT-SPT: Sideless Posterior Trays 50 pieces/bx

PLD BT-QRT: Quadrant Trays 50 pieces/bx

PLD BT-FRH: Full Arch Trays 40 pieces/bx



HP MIXING TIPS

VP8104: Teal

VP8105: Yellow

VP8106: Pink

VP8107: Purple

48/bag



HP T-MIXING TIPS

VP8104T: Teal

VP8105T: Yellow

VP8106T: Pink

48/bag

VINYL TRAY ADHESIVE

Firm adhesion between impression trays and VPS impression materials. Available in 10ML w/ applicator
 VP-8300



STERILIZERS & ACCESS.

2

COMPRESSOR PARTS & ACCESSORIES

3

VACUUM SUPPLIES & ACCESSORIES

4-5

OPERATORY EQUIPMENT

6

OPERATORY ACCESSORIES

7

HANDPIECES & ACCESSORIES

8

LIGHT PARTS

9

DIGITAL EQUIPMENT

9

OFFICE ORGANIZERS

10-17

NITROUS

18-19

INFECTION CONTROL & DISPOSABLES

20-25

HYGIENE EQUIPMENT & SUPPLY

26-28

IMPRESSION

29

LAB

30

STOOLS

31



WHIPMIX HEAVY DUTY VIBRATOR
The General Purpose is designed to promote easy pouring of plaster while preventing bubbles while pouring. **10675**



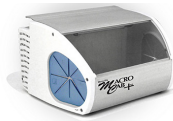
WHIP MIX VIBRATOR
The General Purpose is designed to promote easy pouring of plaster while preventing bubbles while pouring. **10650**



DANVILLE ALUMINUM OXIDE
80042A: 27 Micron
15301: 50 Micron
15201: 90 Micron



TEMPORARY & CROWN BRIDGE is a syringeable bis-acryl composite for chairside provisional restorations. DEFEND Temporary Crown & Bridge is fast and accurate, especially when used in conjunction with a quality vinyl polysiloxane impression material such as DEFEND Super Hydrophilic VPS (Monophase). All are delivered in 76g (50mL) cartridges designed to fit on a 10:1 style automix gun.
100-4101: A1
100-4102: A2
100-4103: A3



DANVILLE MICROCAB PLUS DUST COLLECTOR
4 Window, **9155**



VECTOR LAB HP SET EL-S



DANVILLE MICROETCHER II
22000-13



HANDLER REPLACEMENT WHEEL
Grit 10" 12"
Extra Fine 31A-XF 32A-XF
Fine 31A-F 32A-F
Medium 31A-M 32A-M
Extra Coarse 31A-XC 32A-XC.



ALLSTAR DENTAL PLASTER TRAP
3 1/2 Gallon Complete Kit
ALL35K

Replacement Bucket
ALL35R



HANDLER MODEL TRIMMER WITH BUILT IN SOLENOID
Handler Model Trimmers are known the world over for quality, durability and affordability. Built of water grade aluminum, bronze and stainless steel, Handler Model Trimmers are offered in two different wheel sizes - 10" and 12"
HAN 31-SV: 10 inch, w/ solenoid
HAN 32-SV: 12 inch, w/ solenoid



Whip Mix **SNAP STONE PINK** 11 kg (25 lb.) Carton, **23698:**



Kromopan Alginate - 1 lb Pouch
KRM302



Whip Mix **Green Envy** Tray Cleaner
09635



Mighty Mixer Sticks (100pk)
50Z521



HANDLER 26A RED WING LATHE
A full 1/4 HP, 1725/3450 RPM two-speed lathe for use on top of laboratory bench. **26A**





STERILIZERS & ACCESS. 2

COMPRESSOR PARTS & ACCESSORIES 3

VACUUM SUPPLIES & ACCESSORIES 4-5

OPERATORY EQUIPMENT 6

OPERATORY ACCESSORIES 7

HANDPIECES & ACCESSORIES 8

LIGHT PARTS 9

DIGITAL EQUIPMENT 9

OFFICE ORGANIZERS 10-17

NITROUS 18-19

INFECTION CONTROL & DISPOSABLES 20-25

HYGIENE EQUIPMENT & SUPPLY 26-28

IMPRESSION 29

LAB 30

STOOLS 31



Caster, Soft Wheel for Hard floors, Surf, 2973: Pkg of 5



Caster, Soft Wheel for Hard floors, Gray, 2972: Pkg of 5



CROWN AURORA DOCTOR STOOL
Standard Features:
Stool: Triple Lever, Independent , Adjustment, Seat: Advanced Molded Contour
Cylinder: Medium - Metal Base, Base: Fully Polished, Casters: 65mm, Two Tone Grey, Hard Floor, Cushioning: Closed Cell Injection Molded Foam
Upholstery: Standard Vinyl
C140D: \$1,100.00



CROWN CRESTONE ASSISTANT STOOL
Specifications:
Weight: 33 lbs
Stool Base Diameter: 23"
Floor - Seat Height: 16.5" - 24"
Seat Measurements: Diameter 16"
C20A



CROWN CANYON DOCTOR STOOL
Weight: 28 lbs.
Stool Base Diameter: 23"
Floor Seat Height: 25" - 31.5"
Seat Measurements: Width 13" x Depth 16"
C160D



CROWN CRESTONE DOCTOR STOOL
Specifications
Weight: 27 lbs
Stool Base Diameter: 23"
Floor - Seat Height: 14" - 19"
Seat Measurements: Diameter 16"
C20D



CROWN DURANGO STOOL
Specifications:
Weight: 28 lbs
Stool Base Diameter: 23"
Floor - Seat Height: 22.5" - 27.5"
Seat Measurements: Diameter 16"
C90SS



CROWN DURANGO ASSISTANT STOOL
Standard Features
Stool: Dual Lever Adjustment
Seat: English Style Saddle
Arm: Ratcheting
Cylinder: Assistant - Metal Base
Foot Ring: Adjustable
Base: Metal Base
Casters: Carpet - Beige
C90SSA



CROWN TELLURIDE DOCTOR STOOL
Stool: Triple Lever Adjustment
Back: Lumbar
Seat: Oval
Arm: Ratcheting Arm
Cylinder: Assistant - For Metal Base
Foot Ring: Adjustable
Base: Metal - Fully Powder Coated - Beige
C50ABT



CROWN VIRTU DOCTOR STOOL
Weight: 48 lbs
Stool Base Diameter: 24"
Floor Seat Height: 20" - 25"
C120DM



BREWER 3300 SERIES DOCTOR STOOL
Adjustable, contoured, 13"h x 15.5"w backrest with shroud, Contoured, 18"w x 18"d seat cushion, Adjustable, contoured backrest
24" diameter powder-coated; 5-leg base



Q.A.C. (Queen Anne Chair)
English style saddle stool recommended for users of all size
Standard Features
Stool: Dual Lever Adjustment
Seat: English Style Saddle
Cylinder: Medium and Tall
Cushioning: Additional SereneGel Foam
Upholstery: Carbon Silvertex Only
QAC



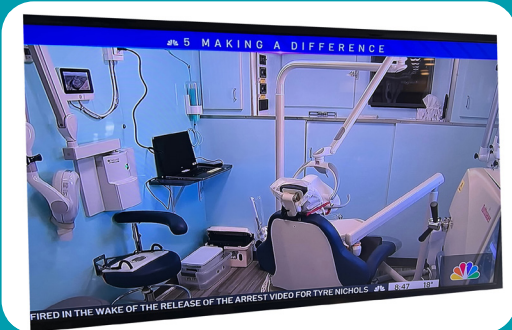
BREWER 3345 SERIES ASSISTANT STOOL
Performance Ergonomic 3300 Series with Foot Ring and Left Body Support.

DID YOU KNOW?



WE MOVED!

Allstar Dental has moved into a 18,000 sq ft facility. We are currently building a large showroom with plenty of room for our full-line of equipment.



We work on and install new dental equipment on mobile dental vans. The one above we refurbished with new equipment and was featured on NBC Chicago.



WE REPAIR HANDPIECES

We repair and sell handpieces. We repair highsPEEDS, lowsPEEDS, fiber optics and all brands.

STEP 1: CREATE AN ACCOUNT ONLINE.

STEP 2: GIVE US A CALL AND

WE CAN SEND YOU A **FREE USPS RETURN LABEL**



WE ARE A FULL-SERVICE DEALER

We believe a full-service dealer not only can build a dental office with blank slate but also can support the new office for many years after with a well trained staff of technicians.

SERVICES:

- WE FIX EVERYTHING IN A DENTAL OFFICE
- WE OFFER A FULL-LINE OF DIGITAL EQUIPMENT INCLUDING: 3D Pans, Sensors, PSP Machines, Cameras, & Impression Scanners
- WE REPAIR STERILIZERS & HAVE OVER 18 RENTAL STERILIZERS AVAILABLE
- WE STOCK: COMPRESSORS, VACUUM PUMPS, STERILIZERS, CHAIRS AND X-RAYS FOR FAST INSTALLATION
- WE SELL PARTS



WE STOCK EQUIPMENT

We stock equipment so your office is never down. Vacuum pumps, compressors, sterilizers and x-rays are typically in-stock and priced competitively.



FULL-SERVICE  DENTAL DEALER

CALL US TODAY: 847-229-9700 | WWW.ALLSTARDENTALSUPPLY.COM